

UNIVERSIDADE DO PORTO

**Self-Evaluation Report**

**Annex XI**

**Graduates in 2008**

Institutional Evaluation  
European University Association

# Education

## \_ Graduates from the U.Porto 2008

University of Porto. Rectory  
Continuous Improvement Service. 22 June 2009

### Table of Contents

<b>Graduates from the University of Porto: sources and acronyms .....</b>	<b>4</b>
<b>Graduates – Growth 2003-2004 to 2007-2008 .....</b>	<b>4</b>
Table 1: Growth of Graduates in 2004-2008, per degree category .....	5
Chart 1: Growth of Graduates in 2004-2008, per degree category .....	5
Table 2: Growth of <i>Licenciados</i> in 2004-2008, per faculty/school .....	6
Table 3: Growth of Master graduates in 2004-2008, per faculty/school .....	6
Table 4: Growth of Specialisation graduates in 2004-2008, per faculty/school .....	7
Table 5: Growth of Doctorate graduates in 2004-2008, per faculty/school .....	7
<b>Graduates 2007/2008 .....</b>	<b>8</b>
Table 6: Number of Graduates in 2008, per programme category and faculty/school .....	8
Table 7: Number of Graduates in 2008, per programme category and nationality .....	8
Chart 2: Proportion of Graduates in 2008, per programme category and nationality .....	9
Table 8: Number of Graduates in 2008, per programme category and gender .....	10
Chart 3: Proportion of Graduates in 2008, per programme category and gender .....	10
<b><i>Licenciados</i> 2007/2008 .....</b>	<b>11</b>
Chart 4: Number of <i>Licenciados</i> in 2008, per age .....	11
Chart 5: Number of <i>Licenciados</i> in 2008, per grades .....	11
Chart 6: Number of <i>Licenciados</i> in 2008, per number of enrolments .....	12
Table 9: Number of <i>Licenciados</i> , per gender and faculty/school (2008) .....	12
Table 10: Number of <i>Licenciados</i> , per nationality and faculty/school (2008) .....	13
Table 11: Number of <i>Licenciados</i> , per gender, age and programme (2008) .....	14
Table 12: Number of <i>Licenciados</i> , per grades, no. of enrolments and programme (2008) .....	18
<b>Integrated Master graduates 2007/2008 .....</b>	<b>23</b>
Chart 7: Number of Integrated Master graduates in 2008, per age .....	23
Chart 8: Number of Integrated Master graduates in 2008, per grades .....	23
Chart 9: Number of Integrated Master graduates in 2008, per no. of enrolments .....	24
Table 13: Number of Integrated Master graduates, per gender and faculty/school (2008) .....	24
Table 14: Number of Integrated Master graduates, per nationality and faculty/school (2008) .....	24
Table 15: Number of Integrated Master graduates, per gender, age and programme (2008) .....	25
Table 16: Number of Integrated Master graduates, per grades, no. of enrolments and programme (2008) .....	25
<b>Master graduates 2007/2008 .....</b>	<b>26</b>
Chart 10: Number of Master graduates in 2008, per age .....	26
Chart 11: Number of Master graduates in 2008, per grades .....	26

Chart 12: Number of Master graduates in 2008, per no. of enrolments .....	27
Table 17: Number of Master graduates, per gender and faculty/school (2008) .....	27
Table 18: Number of Master graduates, per nationality and faculty/school (2008) .....	28
Table 19: Number of Master graduates, per gender, age and programme (2008).....	29
<b>Specialisation graduates 2007/2008 .....</b>	<b>32</b>
Chart 13: Number of Specialisation graduates in 2008, per age .....	32
Chart 14: Number of Specialisation graduates in 2008, per grades .....	33
Chart 15: Number of Specialisation graduates in 2008, per no. of enrolments .....	33
Table 20: Number of Specialisation graduates, per gender and faculty/school (2008) .....	34
Table 21: Number of Specialisation graduates, per nationality and faculty/school (2008) .....	34
Table 22: Number of Specialisation graduates, per gender, age and programme (2008) .....	35
<b>Doctorate graduates 2007/2008.....</b>	<b>36</b>
Chart 16: Number of Doctorate graduates in 2008, per age.....	36
Chart 17: Number of Doctorate graduates in 2008, per grades.....	36
Chart 18: Number of Doctorate graduates in 2008, per no. of enrolments.....	37
Table 23: Number of Doctorate graduates, per gender, age and faculty/school (2008).....	37
Table 24: Number of Doctorate graduates, per nationality and faculty/school (2008).....	38
Table 25: Number of Doctorate graduates, per gender, age and programme/field of knowledge (2008).....	39

Translation Note: For the purpose of this document, the term *Licenciado* means "Undergraduate student".

## Graduates from the University of Porto

The data refers to the situation as at 31 December. Therefore, as an example, the data identified as 2008 refers to the 2007-2008 academic year, as at 31 December 2008.

Unless otherwise stated, the source of the data shown is the Academic and Training Organization Services of the Rectory of the University of Porto – Reply from the U.Porto to the Survey on the Register of Enrolled and Graduate Students in Higher Education (RAIDES/DIMAS).

## Sources

FAC – RAIDES/DIMAS: Academic and Training Organization Services of the Rectory of the University of Porto – Reply from the U.Porto to the Statistical Survey on the Register of Enrolled and Graduate Students in Higher Education (RAIDES/DIMAS).

OCES – DIMAS (D): Science and Higher Education Observatory - Statistical Survey on Graduates and Students Enrolled in Higher Education (DIMAS). Editions: “Graduates in Higher Education in 2005-2006”, “Graduates in Higher Education in 2004-2005” and “Graduates (2003 - 2004)”.

*In* <http://www.gpeari.mctes.pt/index.php?idc=47&idi=171906&valor=1>

## Acronyms

F – Female graduates

M – Male graduates

MF – Total no. of graduates

D – Doctorate pre-Bologna

D3 – 3<sup>rd</sup> cycle

E – Specialisation

L – Undergraduate degree pre-Bologna

L1 – 1<sup>st</sup> cycle

L1MI – 1<sup>st</sup> cycle of Integrated Master

M – Master degree pre-Bologna

M2 – 2<sup>nd</sup> cycle

MI – Integrated Master

EGP – University of Porto Business School

FADEUP – Faculty of Sport

FAUP – Faculty of Architecture

FBAUP – Faculty of Fine Arts

FCNAUP – Faculty of Nutrition and Food Science

FCUP – Faculty of Sciences

FDUP – Faculty of Law

FEP – Faculty of Economics

FEUP – Faculty of Engineering

FFUP – Faculty of Pharmacy

FLUP – Faculty of Arts

FMDUP – Faculty of Dental Medicine

FMUP – Faculty of Medicine

FPCEUP – Faculty of Psychology and Education Science

ICBAS – Institute of Biomedical Sciences Abel Salazar

## Graduates – Growth 2003-2004 to 2007-2008

Table 1: Growth of Graduates in 2004-2008, per degree category

	2004*	2005*	2006*	2007	2008	Rel. difference 2004-2008
Undergraduate	2908	3188	2834	3047	4718	62%
<i>L</i>	2908	3188	2834	3047	1960	-33%
<i>L1</i>					1013	
<i>L1MI</i>					1745	
Integrated Master					1240	
Master	472	564	642	678	769	63%
<i>M</i>	472	564	642	678	487	3%
<i>M2</i>					282	
Specialisation	217	228	333	484	379	75%
Doctorate	150	186	221	219	243	62%
<i>D</i>	150	186	221	219	240	60%
<i>D3</i>					3	
<b>U.Porto Total</b>	<b>3747</b>	<b>4166</b>	<b>4030</b>	<b>4428</b>	<b>7349</b>	<b>96%</b>

Sources: FAC – RAIDES/DIMAS, except \*; \*OCES – DIMAS (D)

Chart 1: Growth of Graduates in 2004-2008, per degree category

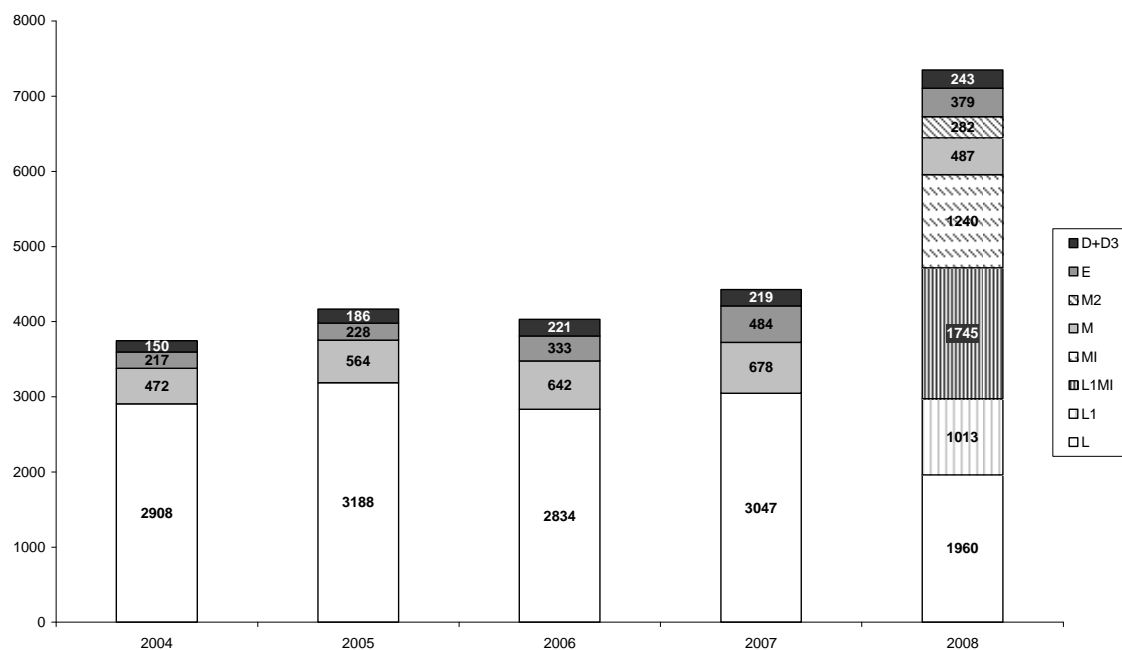


Table 2: Growth of *Licenciados* in 2004-2008, per faculty/school

	2004*	2005*	2006*	2007	2008				Rel. difference 2008/2004
					L	L1	L1MI	L+L1+L1MI	
FAUP	70	113	141	147	136			136	94%
FBAUP	111	106	100	116	88	67		155	40%
FCUP	431	389	382	358	275	389	21	685	59%
FCNAUP	60	44	44	45	60			60	0%
FADEUP	95	101	108	91	113			113	19%
FDUP	74	99	102	102	91	97		188	154%
FEP	341	343	345	398	349			349	2%
FEUP	541	530	501	663	31		547	578	7%
FFUP	107	120	94	120			150	150	40%
FLUP	573	814	471	482	529	418		947	65%
FMUP	146	150	182	187			711	711	387%
FMDUP	71	58	59	45	49		49	98	38%
FPCEUP	182	193	165	158	41	37	79	157	-14%
ICBAS	106	128	140	135	198	5	188	391	269%
<b>U.Porto Total</b>	<b>2908</b>	<b>3188</b>	<b>2834</b>	<b>3047</b>	<b>1960</b>	<b>1013</b>	<b>1745</b>	<b>4718</b>	<b>62%</b>

Sources: FAC – RAIDES/DIMAS, except \*; \*OCES – DIMAS (D)

Table 3: Growth of Master graduates in 2004-2008, per faculty/school

	2004*	2005*	2006*	2007	2008			Rel. difference 2008-2004
					M	M2	M+M2	
FAUP	6	0	9	0	2		2	-67%
FBAUP	1	1	8	18	17	41	58	5700%
FCUP	116	123	140	148	81	127	208	79%
FCNAUP	2	6	4	3	6		6	200%
FADEUP	80	85	93	110	77		77	-4%
FDUP	0	4	3	0			0	
FEP	32	23	22	30	56		56	75%
FEUP	79	120	138	121	90	36	126	59%
FFUP	11	12	11	19	15	6	21	91%
FLUP	5	68	65	63	39	2	41	720%
FMUP	48	32	34	44	4	54	58	21%
FMDUP	9	12	20	14	5		5	-44%
FPCEUP	33	37	51	65	56	16	72	118%
ICBAS	46	38	43	41	39		39	-15%
EGP	4	3	1	2			0	
<b>U.Porto Total</b>	<b>472</b>	<b>564</b>	<b>642</b>	<b>678</b>	<b>487</b>	<b>282</b>	<b>769</b>	<b>63%</b>

Sources: FAC – RAIDES/DIMAS, except \*; \*OCES – DIMAS (D)

Table 4: Growth of Specialisation graduates in 2004-2008, per faculty/school

	2004*	2005*	2006*	2007	2008	Rel. difference 2008-2004
FAUP	0	0	0	0	0	--
FBAUP	0	0	0	0	0	--
FCUP	0	4	11	21	8	--
FCNAUP	0	0	0	0	0	--
FADEUP	0	0	0	0	0	--
FDUP	35	91	95	106	41	17%
FEP	0	0	0	0	0	--
FEUP	23	27	37	32	4	-83%
FFUP	14	9	2	14	0	--
FLUP	19	17	127	178	142	647%
FMUP	95	76	59	112	146	54%
FMDUP	4	4	2	4	4	0%
FPCEUP	27	0	0	17	34	26%
ICBAS	0	0	0	0	0	--
EGP	0	0	0	0	0	--
<b>U.Porto Total</b>	<b>217</b>	<b>228</b>	<b>333</b>	<b>484</b>	<b>379</b>	<b>75%</b>

Sources: FAC – RAIDES/DIMAS, except \*; \*OCES – DIMAS (D)

Table 5: Growth of Doctorate graduates in 2004-2008, per faculty/school

	2004	2005*	2006*	2007	2008			Rel. difference 2008/2004
					D	D3	D+D3	
FAUP	4	0	2	1	3		3	-25%
FBAUP	0	0	2	1	2		2	--
FCUP	13	16	36	43	33		33	154%
FCNAUP	1	1	2	1	2		2	100%
FADEUP	4	12	10	10	11		11	175%
FDUP	0	0	1	1	0		0	--
FEP	3	9	4	8	13		13	333%
FEUP	45	52	54	31	61	3	64	42%
FFUP	6	6	11	14	9		9	50%
FLUP	21	22	16	31	20		20	-5%
FMUP	12	19	16	19	16		16	33%
FMDUP	3	3	6	0	0		0	--
FPCEUP	14	14	29	18	15		15	7%
ICBAS	24	32	32	41	55		55	129%
<b>U.Porto Total</b>	<b>150</b>	<b>186</b>	<b>221</b>	<b>219</b>	<b>243</b>	<b>3</b>	<b>243</b>	<b>62%</b>

Sources: FAC – RAIDES/DIMAS, except \*; \*OCES – DIMAS (D)

## Graduates 2007/2008

Table 6: Number of Graduates in 2008, per programme category and faculty/school

	L	L1	MI	M	M2	E	D	D3	Total	%
FAUP	136			2			3		141	2%
FBAUP	88	67		17	41		2		215	3%
FCUP	275	410	15	81	127	8	33		949	13%
FCNAUP	60			6			2		68	1%
FADEUP	113			77			11		201	3%
FDUP	91	97				41			229	3%
FEP	349			56			13		418	6%
FEUP	31	547	763	90	36	4	61	3	1535	21%
FFUP		150	173	15	6		9		353	5%
FLUP	529	418		39	2	142	20		1150	16%
FMUP		711	183	4	54	146	16		1114	15%
FMDUP	49	49		5		4			107	1%
FPCEUP	41	116	106	56	16	34	15		384	5%
ICBAS	198	193		39			55		485	7%
<b>U.Porto Total</b>	<b>1960</b>	<b>2758</b>	<b>1240</b>	<b>487</b>	<b>282</b>	<b>379</b>	<b>240</b>	<b>3</b>	<b>7349</b>	<b>100%</b>
	27%	38%	17%	7%	4%	5%	3%	0,04%		

Source: FAC – RAIDES/DIMAS

Table 7: Number of Graduates in 2008, per programme category and nationality

	L	L1	MI	M	M2	E	D	D3	U.Porto Total
Portugal	1927	2717	1226	434	275	372	223	3	7177
Brazil	2	9		35	2		10		58
Cape Verde	5	9	4	11	1				30
Spain	4		1		2	4			11
France	3	3				1	1		8
Germany	4	1	1	1					7
Angola	2	2	2	1					7
Venezuela	2	2	2			1			7
Romania				3			1		4
East Timor	3	1							4
Sao Tome and Principe	1	3							4
Thailand							3		3
Switzerland	2		1						3
Mozambique	1	1					1		3
South Africa			1		1				2
Russian Federation		1			1				2
Italy	2								2
Austria	1		1						2
China		2							2
Peru				2					2
Luxembourg		1							1
Mexico		1							1
Ecuador			1						1



	L	L1	MI	M	M2	E	D	D3	U.Porto Total
Colombia							1		1
Guinea Bissau		1							1
Namibia	1								1
Poland		1							1
Belgium						1			1
India		1							1
United Kingdom		1							1
Israel		1							1
<b>Total</b>	<b>1960</b>	<b>2758</b>	<b>1240</b>	<b>487</b>	<b>282</b>	<b>379</b>	<b>240</b>	<b>3</b>	<b>7349</b>

Source: FAC – RAIDES/DIMAS

Chart 2: Proportion of Graduates in 2008, per programme category and nationality

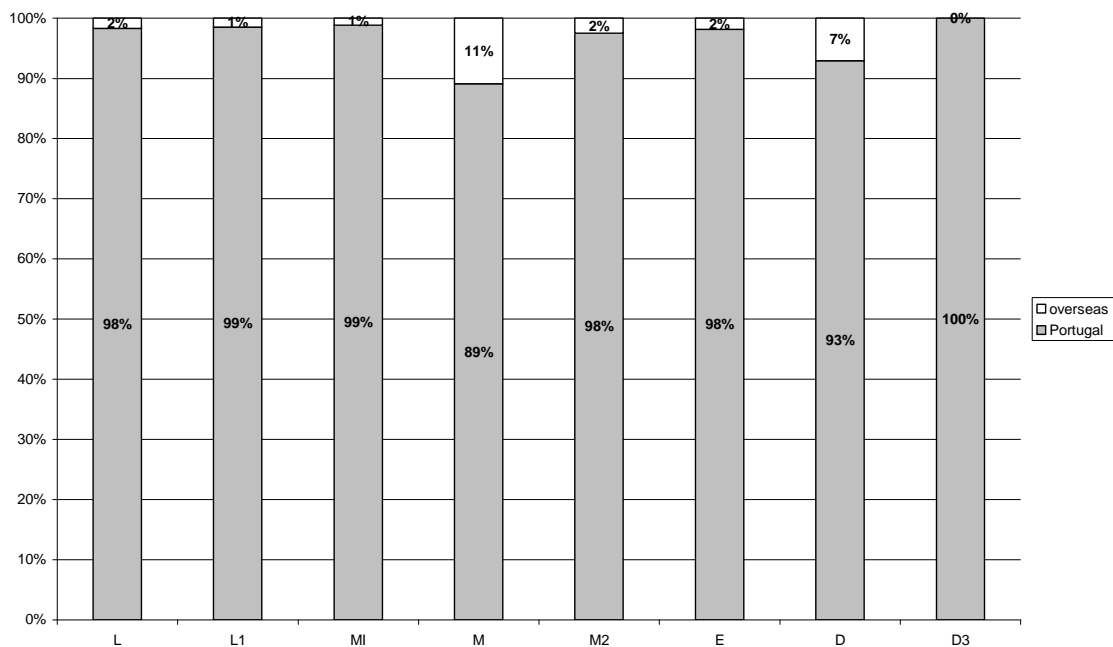
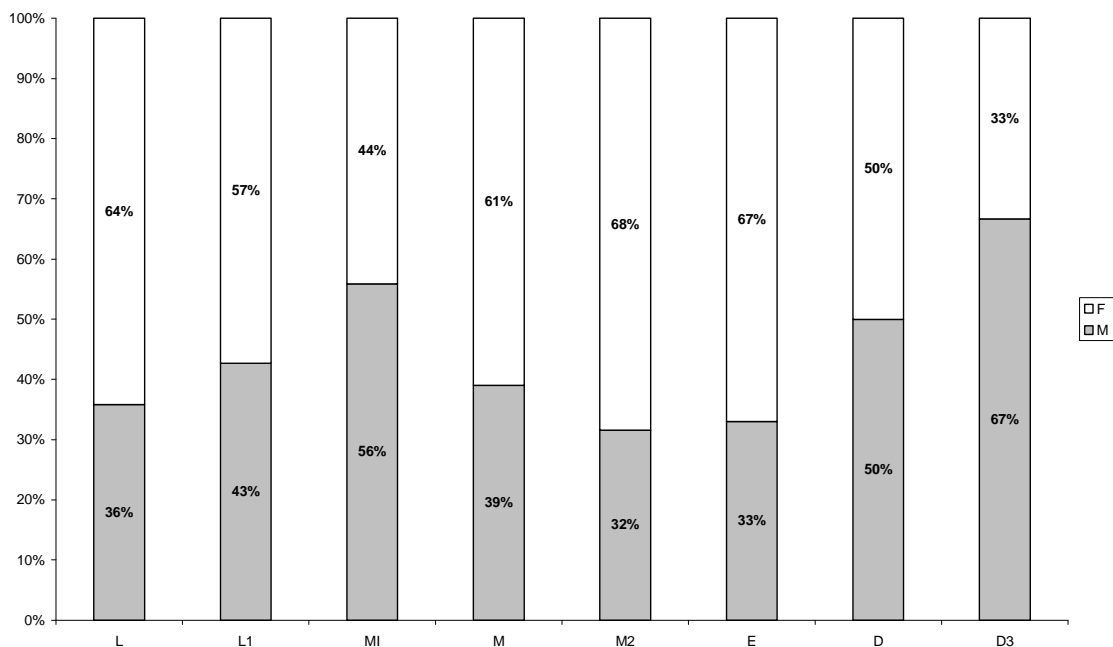


Table 8: Number of Graduates in 2008, per programme category and gender

	M	M/MF (%)	MF
L	702	36%	1960
L1	1177	43%	2758
MI	693	56%	1240
M	190	39%	487
M2	89	32%	282
E	125	33%	379
D	120	50%	240
D3	2	67%	3
<b>U.Porto Total</b>	<b>3098</b>	<b>42%</b>	<b>7349</b>

Source: FAC – RAIDES/DIMAS

Chart 3: Proportion of Graduates in 2008, per programme category and gender



**Licenciados 2007/2008**

Chart 4: Number of *Licenciados* in 2008, per age

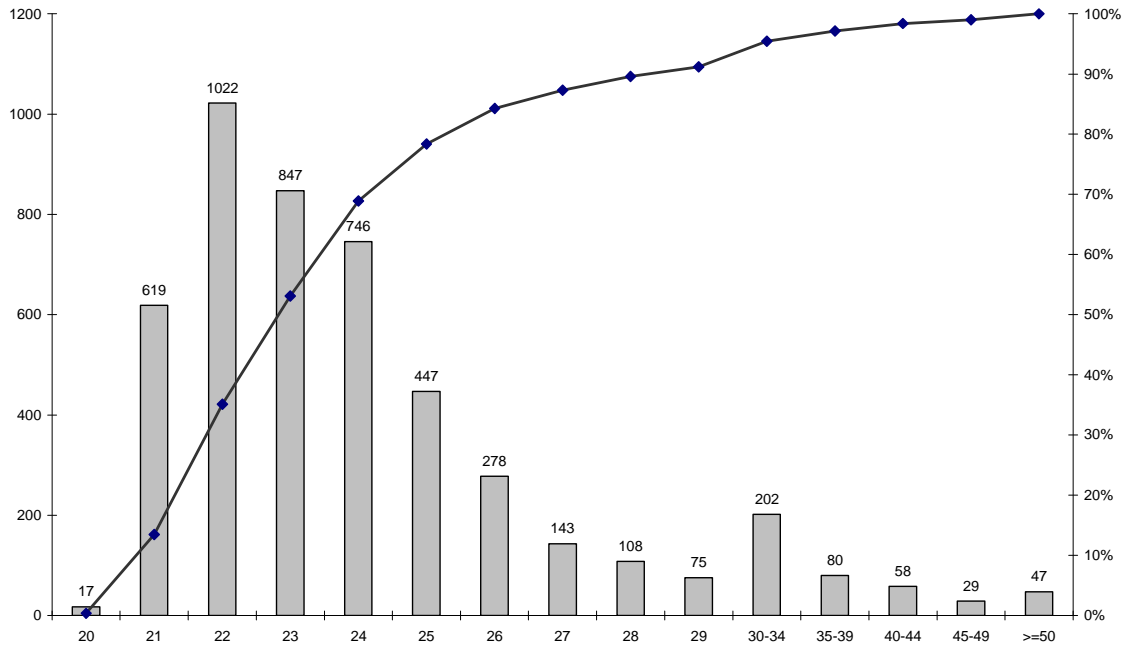


Chart 5: Number of *Licenciados* in 2008, per grades

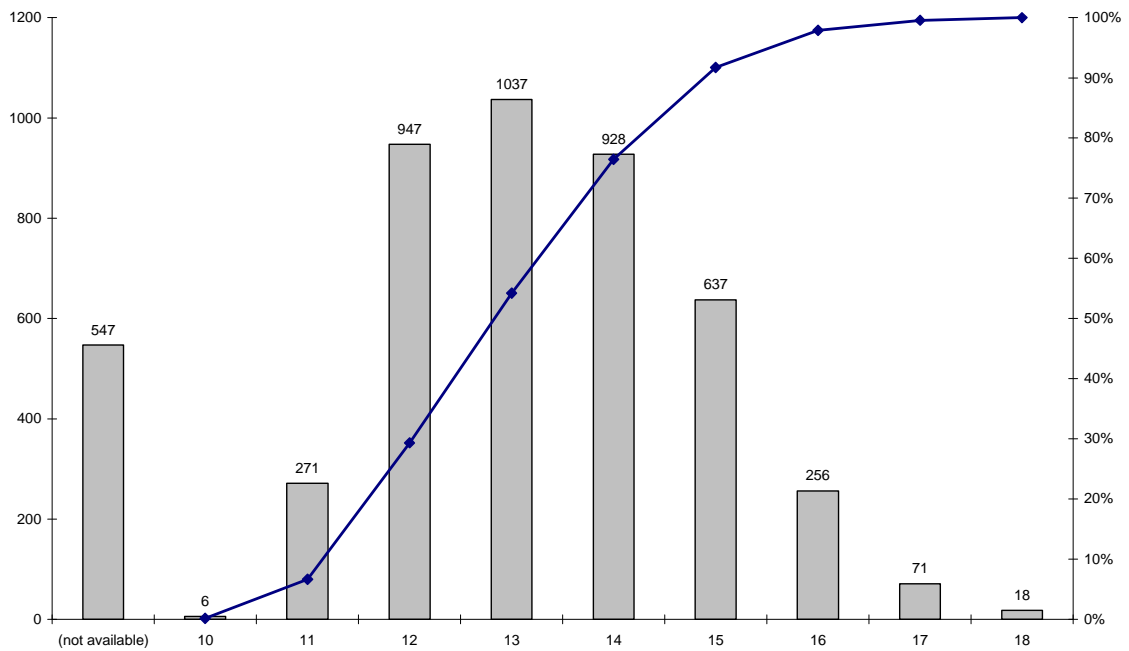


Chart 6: Number of *Licenciados* in 2008, per number of enrolments

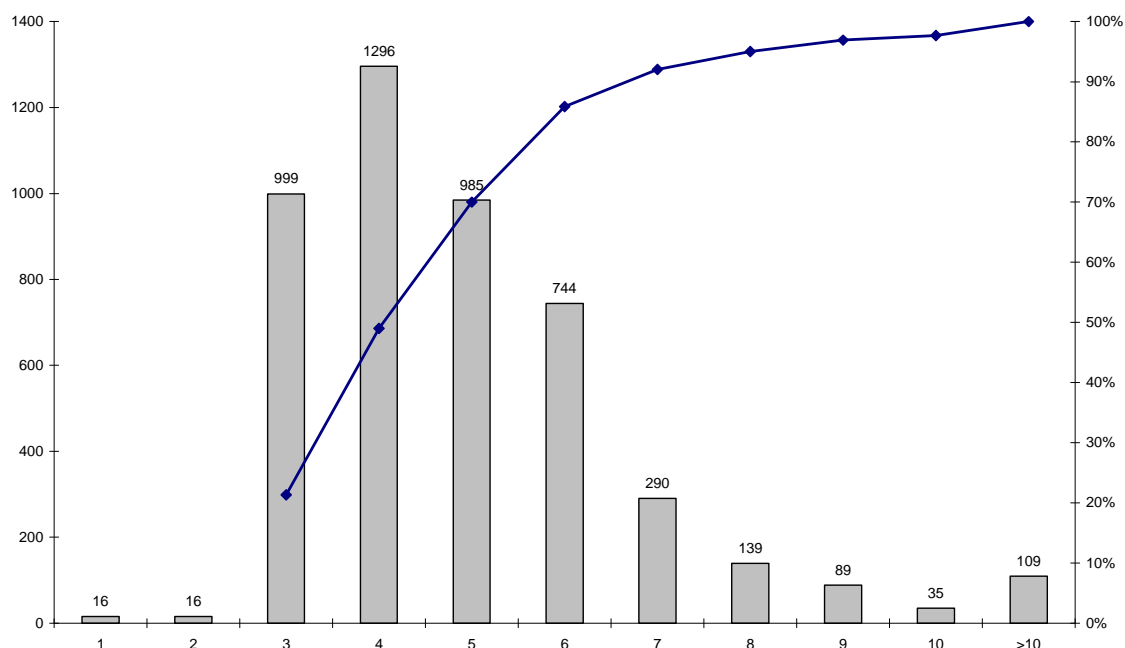


Table 9: Number of *Licenciados*, per gender and faculty/school (2008)

	L		L1		L+L1		
	M	MF	M	MF	M	MF	M/MF %
Faculty of Architecture	62	136			62	136	46%
Faculty of Fine Arts	28	88	18	67	46	155	30%
Faculty of Sciences	100	275	215	410	315	685	46%
Faculty of Nutrition and Food Science	10	60			10	60	17%
Faculty of Sport	67	113			67	113	59%
Faculty of Law	20	91	24	97	44	188	23%
Faculty of Economics	186	349			186	349	53%
Faculty of Engineering	25	31	434	547	459	578	79%
Faculty of Pharmacy			27	150	27	150	18%
Faculty of Arts	131	529	132	418	263	947	28%
Faculty of Medicine			230	711	230	711	32%
Faculty of Dental Medicine	16	49	11	49	27	98	28%
Faculty of Psychology and Education Science	4	41	12	116	16	157	10%
Institute of Biomedical Sciences Abel Salazar	53	198	74	193	127	391	32%
<b>U.Porto Total</b>	<b>702</b>	<b>1960</b>	<b>1177</b>	<b>2758</b>	<b>1879</b>	<b>4718</b>	<b>40%</b>

Source: FAC – RAIDES/DIMAS

Table 10: Number of *Licenciados*, per nationality and faculty/school (2008)

	FAUP	FBAUP	FCUP	FCNAUP	FADEUP	FDUP	FEP	FEUP	FFUP	FLUP	FMUP	FMDUP	FPCEUP	ICBAS	U.Porto Total
Portugal	131	155	677	59	113	185	348	569	148	917	706	95	157	384	4644
Cape Verde			3			1	1	3	1	3				2	14
Brazil	1		2					1		5	2				11
France	1							2		2		1			6
Germany										5					5
Angola						1				2	1				4
Spain				1						2		1			4
Sao Tome and Principe										1	1			2	4
East Timor										3	1				4
Venezuela								1		3					4
China			1											1	2
Italy	2														2
Mozambique						1								1	2
Switzerland										2					2
Austria	1														1
Guinea Bissau														1	1
India								1							1
Israel									1						1
Luxembourg								1							1
Mexico			1												1
Namibia										1					1
Poland												1			1
United Kingdom										1					1
Russian Federation			1												1
<b>Total</b>	<b>136</b>	<b>155</b>	<b>685</b>	<b>60</b>	<b>113</b>	<b>188</b>	<b>349</b>	<b>578</b>	<b>150</b>	<b>947</b>	<b>711</b>	<b>98</b>	<b>157</b>	<b>391</b>	<b>4718</b>

Source: FAC – RAIDES/DIMAS

Table 11: Number of *Licenciados*, per gender, age and programme (2008)

	L		L1		L + L1			Age average
	M	MF	M	MF	M	M/MF %	MF	
<b>Faculty of Architecture</b>	<b>62</b>	<b>136</b>			<b>62</b>	<b>46%</b>	<b>136</b>	<b>26</b>
Architecture	62	136			62	46%	136	26
<b>Faculty of Fine Arts</b>	<b>28</b>	<b>88</b>	<b>18</b>	<b>67</b>	<b>46</b>	<b>30%</b>	<b>155</b>	<b>25</b>
Plastic Arts			9	33	9	27%	33	24
Plastic Arts - Sculpture	13	26			13	50%	26	27
Plastic Arts - Painting	5	25			5	20%	25	25
Communication Design			9	34	9	26%	34	24
Communication Design (Graphic Arts)	10	37			10	27%	37	25
<b>Faculty of Sciences</b>	<b>100</b>	<b>275</b>	<b>215</b>	<b>410</b>	<b>315</b>	<b>46%</b>	<b>685</b>	<b>25</b>
Landscape Architecture	4	21			4	19%	21	24
Astronomy			13	21	13	62%	21	28
Biology	19	56	19	62	38	32%	118	23
Biology and Geology (Teaching)	4	15			4	27%	15	24
Biochemistry	5	26	21	48	26	35%	74	23
Computer Science	30	50	58	69	88	74%	119	27
Engineering Sciences			14	22	14	64%	22	31
Computer Engineering Sciences			18	20	18	90%	20	24
Environmental Sciences and Technology			23	52	23	44%	52	24
Agronomic Engineering		4				0%	4	24
Geographical Engineering	1	2			1	50%	2	30
Physics	6	12	17	19	23	74%	31	27
Applied Physics	2	3			2	67%	3	29
Physics and Chemistry (Teaching)	3	10			3	30%	10	27
Technological Physics			1	1	1	100%	1	21
Applied Physics/Mathematics (Astronomy)	1	1			1	100%	1	26
Geology	6	15	2	3	8	44%	18	25

	L		L1		L + L1			Age average
	M	MF	M	MF	M	M/MF %	MF	
Mathematics	6	20	16	33	22	42%	53	26
Mathematics applied to Technology	6	8			6	75%	8	25
Chemistry	7	32	13	60	20	22%	92	26
<b>Faculty of Nutrition and Food Science</b>	<b>10</b>	<b>60</b>			<b>10</b>	<b>17%</b>	<b>60</b>	<b>25</b>
Nutrition Sciences	10	60			10	17%	60	25
<b>Faculty of Sport</b>	<b>67</b>	<b>113</b>			<b>67</b>	<b>59%</b>	<b>113</b>	<b>26</b>
Sports and Physical Education	67	113			67	59%	113	26
<b>Faculty of Law</b>	<b>20</b>	<b>91</b>	<b>24</b>	<b>97</b>	<b>44</b>	<b>23%</b>	<b>188</b>	<b>23</b>
Law	20	91	24	97	44	23%	188	23
<b>Faculty of Economics</b>	<b>186</b>	<b>349</b>			<b>186</b>	<b>53%</b>	<b>349</b>	<b>24</b>
Economics	123	237			123	52%	237	24
Management	63	112			63	56%	112	24
<b>Faculty of Engineering</b>	<b>25</b>	<b>31</b>	<b>434</b>	<b>547</b>	<b>459</b>	<b>79%</b>	<b>578</b>	<b>23</b>
Engineering Sciences - Electrical and Computers Engineering			93	103	93	90%	103	23
Engineering Sciences - Civil Engineering			126	165	126	76%	165	23
Engineering Sciences - Environmental Engineering			10	24	10	42%	24	22
Engineering Sciences - Informatics and Computing Engineering			71	77	71	92%	77	22
Engineering Sciences - Metallurgical and Materials Engineering			9	12	9	75%	12	24
Engineering Sciences - Chemical Engineering			20	47	20	43%	47	23
Engineering Sciences - Industrial Engineering and Management			41	51	41	80%	51	22
Engineering Sciences - Mechanics			64	68	64	94%	68	23
Civil Engineering	1	2			1	50%	2	28
Mining and Geo-Environmental Engineering	8	12			8	67%	12	30
Electrical and Computers Engineering	6	6			6	100%	6	33
Informatics and Computing Engineering	1	1			1	100%	1	31
Mechanical Engineering	7	7			7	100%	7	36

	L		L1		L + L1			Age average
	M	MF	M	MF	M	M/MF %	MF	
Chemical Engineering	1	1			1	100%	1	26
Management and Industrial Engineering	1	2			1	50%	2	30
<b>Faculty of Pharmacy</b>			<b>27</b>	<b>150</b>	<b>27</b>	<b>18%</b>	<b>150</b>	<b>24</b>
Basic Studies in Pharmaceutical Sciences			27	150	27	18%	150	24
<b>Faculty of Arts</b>	<b>131</b>	<b>529</b>	<b>132</b>	<b>418</b>	<b>263</b>	<b>28%</b>	<b>947</b>	<b>27</b>
Archaeology	17	40	13	30	30	43%	70	26
Information Science	10	27	5	29	15	27%	56	25
Communication Sciences: Journalism, Public Relations, Multimedia			9	47	9	19%	47	23
European Studies: Languages and International Relations	2	15			2	13%	15	24
Portuguese and Lusophone Studies			2	5	2	40%	5	26
Philosophy	15	36	20	57	35	38%	93	29
Geography	16	45	26	55	42	42%	100	27
History	23	59	21	43	44	43%	102	29
History of Art	5	36	9	25	14	23%	61	28
Journalism and Communication Sciences	8	55			8	15%	55	23
Modern Languages and Literature: Portuguese Lang. and Culture (Teaching Port. as a Foreign Lang.)	2	5			2	40%	5	28
Applied Languages			3	9	3	33%	9	22
Modern Languages and Literature: Portuguese Language, Literature and Culture	5	27			5	19%	27	27
Modern Languages and Literature: German Studies		2				0%	2	26
Modern Languages and Literature: Anglo-American Studies	4	20			4	20%	20	27
Modern Languages and Literature: French Studies	1	6			1	17%	6	24
Modern Languages and Literature: French and English Studies	2	8			2	25%	8	27
Modern Languages and Literature: English and German Studies	4	20			4	20%	20	25
Modern Languages and Literature: Portuguese and German Studies		8				0%	8	27
Modern Languages and Literature: Portuguese and Spanish Studies		12				0%	12	31
Modern Languages and Literature: Portuguese and French Studies		19				0%	19	33



	L		L1		L + L1			Age average
	M	MF	M	MF	M	M/MF %	MF	
Modern Languages and Literature: Portuguese and English Studies	6	47			6	13%	47	26
Languages and International Relations			7	17	7	41%	17	25
Languages, Literatures and Cultures			14	69	14	20%	69	30
Sociology	11	42	3	32	14	19%	74	26
<b>Faculty of Medicine</b>			<b>230</b>	<b>711</b>	<b>230</b>	<b>32%</b>	<b>711</b>	<b>23</b>
Basic Health Sciences			230	711	230	32%	711	23
<b>Faculty of Dental Medicine</b>	<b>16</b>	<b>49</b>	<b>11</b>	<b>49</b>	<b>27</b>	<b>28%</b>	<b>98</b>	<b>24</b>
Basic Studies in Oral Health			11	49	11	22%	49	22
Dental Medicine	16	49			16	33%	49	25
<b>Faculty of Psychology and Education Science</b>	<b>4</b>	<b>41</b>	<b>12</b>	<b>116</b>	<b>16</b>	<b>10%</b>	<b>157</b>	<b>24</b>
Education Sciences	4	41	5	37	9	12%	78	25
Psychological Sciences			7	79	7	9%	79	22
<b>Institute of Biomedical Sciences Abel Salazar</b>	<b>53</b>	<b>198</b>	<b>74</b>	<b>193</b>	<b>127</b>	<b>32%</b>	<b>391</b>	<b>24</b>
Basic Health Sciences			58	142	58	41%	142	23
Aquatic Sciences	4	10	2	5	6	40%	15	23
Basic Studies in Animal Health Sciences			14	46	14	30%	46	24
Medicine	38	133			38	29%	133	25
Veterinary Medicine	11	55			11	20%	55	26
<b>U.Porto Total</b>	<b>702</b>	<b>1960</b>	<b>1177</b>	<b>2758</b>	<b>1879</b>	<b>40%</b>	<b>4718</b>	<b>25</b>

Source: FAC – RAIDES/DIMAS

Table 12: Number of *Licenciados*, per grades, no. of enrolments and programme (2008)

	L			L1			L+L1			
	MF	Grades average	Average no. of enrolments	MF	Grades average	Average no. of enrolments	MF	Grades average	Average no. of enrolments	Conclusion in N (%)
<b>Faculty of Architecture</b>	<b>136</b>	<b>14.7</b>	<b>7</b>				<b>136</b>	<b>14.7</b>	<b>7</b>	<b>41%</b>
Architecture	136	14.7	7				136	14.7	7	41%
<b>Faculty of Fine Arts</b>	<b>88</b>	<b>13.6</b>	<b>6</b>	<b>67</b>	<b>13.6</b>	<b>4</b>	<b>155</b>	<b>13.6</b>	<b>5</b>	<b>62%</b>
Plastic Arts				33	13.1	5	33	13.1	5	67%
Plastic Arts - Sculpture	26	13.3	6				26	13.3	6	38%
Plastic Arts - Painting	25	13.5	6				25	13.5	6	52%
Communication Design				34	14.1	4	34	14.1	4	82%
Communication Design (Graphic Arts)	37	13.8	6				37	13.8	6	62%
<b>Faculty of Sciences</b>	<b>275</b>	<b>14.0</b>	<b>6</b>	<b>410</b>	<b>13.0</b>	<b>5</b>	<b>685</b>	<b>13.4</b>	<b>5</b>	<b>37%</b>
Landscape Architecture	21	14.0	5				21	14.0	5	67%
Astronomy				21	12.9	8	21	12.9	8	5%
Biology	56	14.2	5	62	13.4	4	118	13.7	4	52%
Biology and Geology (Teaching)	15	14.3	6				15	14.3	6	33%
Biochemistry	26	14.5	5	48	14.3	4	74	14.4	4	49%
Computer Science	50	14.0	6	69	12.6	7	119	13.2	6	28%
Engineering Sciences				22	11.8	3	22	11.8	3	100%
Computer Engineering Sciences				20	12.7	5	20	12.7	5	0%
Environmental Sciences and Technology				52	13.0	5	52	13.0	5	21%
Agronomic Engineering	4	13.3	6				4	13.3	6	50%
Geographical Engineering	2	11.5	8				2	11.5	8	50%
Physics	12	15.0	8	19	13.9	5	31	14.4	6	32%

	L			L1			L+L1			
	MF	Grades average	Average no. of enrolments	MF	Grades average	Average no. of enrolments	MF	Grades average	Average no. of enrolments	Conclusion in N (%)
Applied Physics	3	12.3	5				3	12.3	5	67%
Physics and Chemistry (Teaching)	10	14.2	7				10	14.2	7	10%
Technological Physics				1	15.0	3	1	15.0	3	100%
Applied Physics/Mathematics (Astronomy)	1	12.0	8				1	12.0	8	0%
Geology	15	12.8	5	3	13.3	3	18	12.9	5	44%
Mathematics	20	14.6	6	33	13.1	5	53	13.6	5	47%
Mathematics applied to Technology	8	13.3	5				8	13.3	5	50%
Chemistry	32	13.7	6	60	12.5	5	92	12.9	6	18%
<b>Faculty of Nutrition and Food Science</b>	<b>60</b>	<b>14.7</b>	<b>5</b>				<b>60</b>	<b>14.7</b>	<b>5</b>	<b>90%</b>
Nutrition Sciences	60	14.7	5				60	14.7	5	90%
<b>Faculty of Sport</b>	<b>113</b>	<b>14.6</b>	<b>6</b>				<b>113</b>	<b>14.6</b>	<b>6</b>	<b>45%</b>
Sports and Physical Education	113	14.6	6				113	14.6	6	45%
<b>Faculty of Law</b>	<b>91</b>	<b>13.1</b>	<b>6</b>	<b>97</b>	<b>12,7</b>	<b>4</b>	<b>188</b>	<b>12.9</b>	<b>5</b>	<b>80%</b>
Law	91	13.1	6	97	12.7	4	188	12.9	5	80%
<b>Faculty of Economics</b>	<b>349</b>	<b>12.5</b>	<b>5</b>				<b>349</b>	<b>12.5</b>	<b>5</b>	<b>38%</b>
Economics	237	12.5	5				237	12.5	5	41%
Management	112	12.5	6				112	12.5	6	34%
<b>Faculty of Engineering</b>	<b>31</b>	<b>12.0</b>	<b>9</b>	<b>547</b>	<b>n/d</b>	<b>4</b>	<b>578</b>	<b>n/d</b>	<b>5</b>	<b>36%</b>
Engineering Sciences - Electrical and Computers Engineering				103	n/d	5	103	n/d	5	25%
Engineering Sciences - Civil Engineering				165	n/d	4	165	n/d	4	44%
Engineering Sciences - Environmental Engineering				24	n/d	3	24	n/d	3	58%
Engineering Sciences - Informatics and Computing Engineering				77	n/d	4	77	n/d	4	51%

	L			L1			L+L1			
	MF	Grades average	Average no. of enrolments	MF	Grades average	Average no. of enrolments	MF	Grades average	Average no. of enrolments	Conclusion in N (%)
Engineering Sciences - Metallurgical and Materials Engineering				12	n/d	5	12	n/d	5	17%
Engineering Sciences - Chemical Engineering				47	n/d	5	47	n/d	5	21%
Engineering Sciences - Industrial Engineering and Management				51	n/d	4	51	n/d	4	43%
Engineering Sciences - Mechanics				68	n/d	5	68	n/d	5	26%
Civil Engineering	2	11.0	8				2	11.0	8	0%
Mining and Geo-Environmental Engineering	12	12.3	8				12	12.3	8	8%
Electrical and Computers Engineering	6	11.8	9				6	11.8	9	33%
Informatics and Computing Engineering	1	13.0	7				1	13.0	7	0%
Mechanical Engineering	7	11.3	11				7	11.3	11	0%
Chemical Engineering	1	14.0	8				1	14.0	8	0%
Management and Industrial Engineering	2	13.0	8				2	13.0	8	0%
<b>Faculty of Pharmacy</b>				<b>150</b>	<b>12.6</b>	<b>5</b>	<b>150</b>	<b>12.6</b>	<b>5</b>	<b>2%</b>
Basic Studies in Pharmaceutical Sciences				150	12.6	5	150	12.6	5	2%
<b>Faculty of Arts</b>	<b>529</b>	<b>13.2</b>	<b>5</b>	<b>418</b>	<b>13.1</b>	<b>4</b>	<b>947</b>	<b>13.2</b>	<b>4</b>	<b>62%</b>
Archaeology	40	13.8	5	30	14.0	4	70	13.9	4	50%
Information Science	27	13.4	4	29	13.4	3	56	13.4	4	88%
Communication Sciences: Journalism, Public Relations, Multimedia				47	13.8	3	47	13.8	3	96%
European Studies: Languages and International Relations	15	13.3	5				15	13.3	5	40%
Portuguese and Lusophone Studies				5	12.2	4	5	12.2	4	60%
Philosophy	36	13.3	5	57	12.6	4	93	12.9	4	53%
Geography	45	12.7	5	55	12.5	4	100	12.6	4	53%
History	59	13.3	5	43	13.1	4	102	13.2	4	59%

	L			L1			L+L1			
	MF	Grades average	Average no. of enrolments	MF	Grades average	Average no. of enrolments	MF	Grades average	Average no. of enrolments	Conclusion in N (%)
History of Art	36	13.6	5	25	14.2	3	61	13.9	4	70%
Journalism and Communication Sciences	55	14.0	4				55	14.0	4	95%
Modern Languages and Literature: Portuguese Lang. and Culture (Teaching Port. as a Foreign Lang.)	5	13.8	4				5	13.8	4	100%
Applied Languages				9	13.4	3	9	13.4	3	78%
Modern Languages and Literature: Portuguese Language, Literature and Culture	27	12.3	5				27	12.3	5	63%
Modern Languages and Literature: German Studies	2	14.5	4				2	14.5	4	100%
Modern Languages and Literature: Anglo-American Studies	20	12.4	4				20	12.4	4	100%
Modern Languages and Literature: French Studies	6	13.2	4				6	13.2	4	100%
Modern Languages and Literature: French and English Studies	8	13.6	6				8	13.6	6	38%
Modern Languages and Literature: English and German Studies	20	13.2	6				20	13.2	6	50%
Modern Languages and Literature: Portuguese and German Studies	8	12.1	7				8	12.1	7	0%
Modern Languages and Literature: Portuguese and Spanish Studies	12	12.4	6				12	12.4	6	33%
Modern Languages and Literature: Portuguese and French Studies	19	11.9	6				19	11.9	6	11%
Modern Languages and Literature: Portuguese and English Studies	47	12.7	6				47	12.7	6	32%
Languages and International Relations				17	13.1	4	17	13.1	4	53%
Languages, Literatures and Cultures				69	12.7	4	69	12.7	4	57%
Sociology	42	13.8	6	32	12.8	3	74	13.4	5	72%
<b>Faculty of Medicine</b>				<b>711</b>	<b>13.7</b>	<b>5</b>	<b>711</b>	<b>13.7</b>	<b>5</b>	<b>24%</b>
Basic HealthSciences				711	13.7	5	711	13.7	5	24%
<b>Faculty of Dental Medicine</b>	<b>49</b>	<b>13.1</b>	<b>5</b>	<b>49</b>	<b>13.4</b>	<b>2</b>	<b>98</b>	<b>13.3</b>	<b>4</b>	<b>46%</b>
Basic Studies in Oral Health				49	13.4	2	49	13.4	2	45%

	L			L1			L+L1			
	MF	Grades average	Average no. of enrolments	MF	Grades average	Average no. of enrolments	MF	Grades average	Average no. of enrolments	Conclusion in N (%)
Dental Medicine	49	13.1	5				49	13.1	5	47%
<b>Faculty of Psychology and Education Science</b>	<b>41</b>	<b>14.8</b>	<b>4</b>	<b>116</b>	<b>14.4</b>	<b>3</b>	<b>157</b>	<b>14.5</b>	<b>3</b>	<b>88%</b>
Education Sciences	41	14.8	4	37	15.1	3	78	14.9	4	90%
Psychological Sciences				79	14.1	3	79	14.1	3	86%
<b>Institute of Biomedical Sciences Abel Salazar</b>	<b>198</b>	<b>14.3</b>	<b>6</b>	<b>193</b>	<b>13.1</b>	<b>4</b>	<b>391</b>	<b>13.7</b>	<b>5</b>	<b>64%</b>
Basic Health Sciences				142	13.3	4	142	13.3	4	57%
Aquatic Sciences	10	14.1	4	5	12.2	4	15	13.5	4	73%
Basic Studies in Animal Health Sciences				46	12.7	5	46	12.7	5	35%
Medicine	133	14.6	6				133	14.6	6	86%
Veterinary Medicine	55	13.8	7				55	13.8	7	53%
<b>U.Porto Total</b>	<b>1960</b>	<b>13.6</b>	<b>6</b>	<b>2758</b>	<b>13.3</b>	<b>4</b>	<b>4718</b>	<b>13.4</b>	<b>5</b>	<b>53%</b>

Source: FAC – RAIDES/DIMAS

Notes: the average grades do not include the *Licenciados* whose final grade is not available; the estimate of the average no. of enrolments does not include the *Licenciados* with a no. of enrolments less than the programme length; the last column represents the proportion of *Licenciados* with N enrolments, where N is the number of years for a programme's normal length.

**Integrated Master graduates 2007/2008**

Chart 7: Number of Integrated Master graduates in 2008, per age

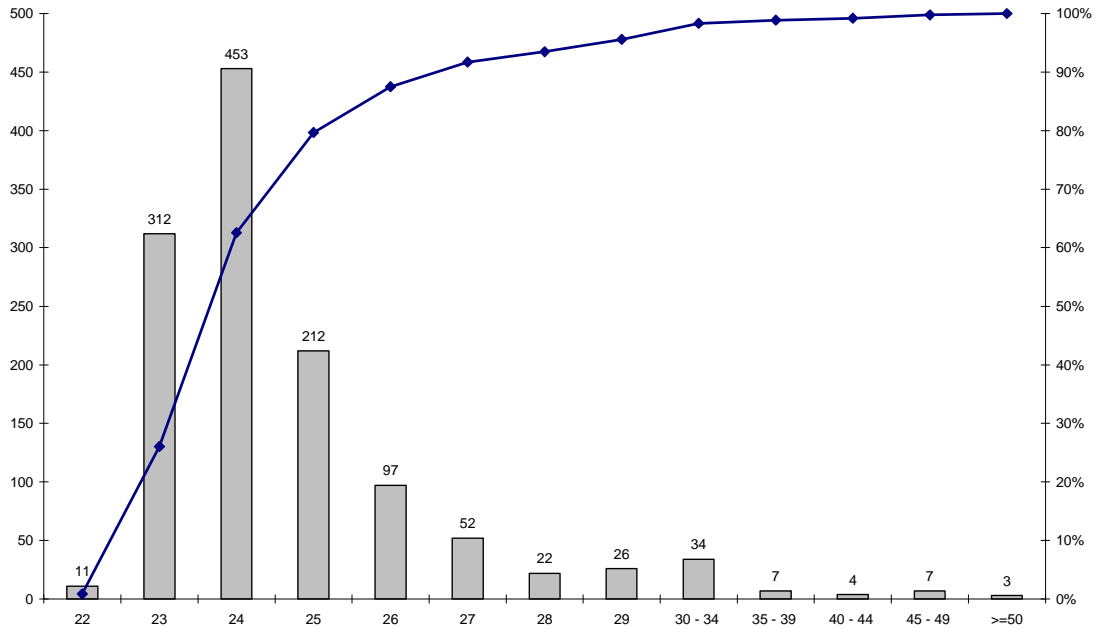


Chart 8: Number of Integrated Master graduates in 2008, per grades

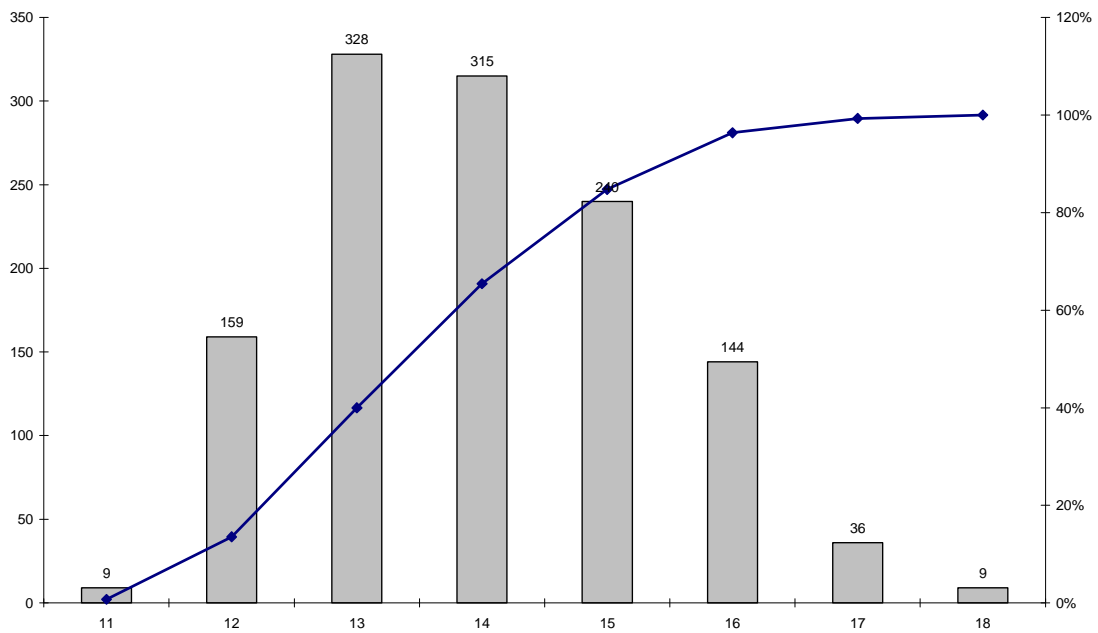


Chart 9: Number of Integrated Master graduates in 2008, per no. of enrolments

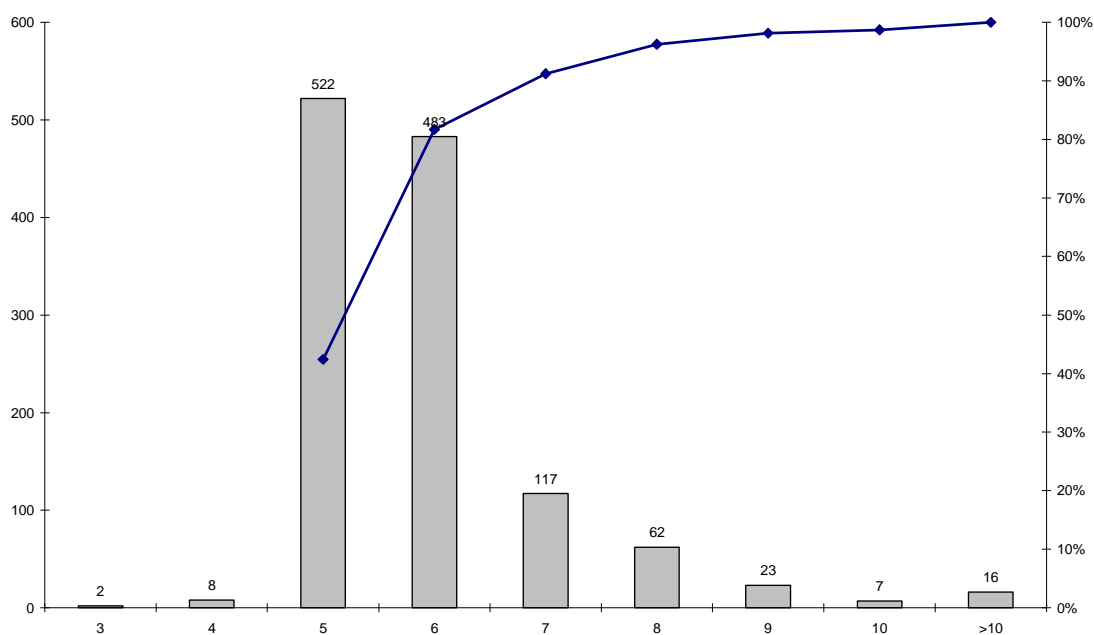


Table 13: Number of Integrated Master graduates, per gender and faculty/school (2008)

	M	M/MF	MF
Faculty of Sciences	12	80%	15
Faculty of Engineering	577	76%	763
Faculty of Pharmacy	32	18%	173
Faculty of Medicine	60	33%	183
Faculty of Psychology and Education Science	12	11%	106
<b>U.Porto Total</b>	<b>693</b>	<b>56%</b>	<b>1240</b>

Source: FAC – RAIDES/DIMAS

Table 14: Number of Integrated Master graduates, per nationality and faculty/school (2008)

	FCUP	FEUP	FFUP	FMUP	FPCEUP	U.Porto Total
Portugal	15	753	172	182	104	1226
Cape Verde		2	1		1	4
Angola		1		1		2
Venezuela		2				2
South Africa		1				1
Germany		1				1
Austria		1				1
Ecuador		1				1
Spain					1	1
Switzerland		1				1
<b>Total</b>	<b>15</b>	<b>763</b>	<b>173</b>	<b>183</b>	<b>106</b>	<b>1240</b>

Source: FAC – RAIDES/DIMAS



Table 15: Number of Integrated Master graduates, per gender, age and programme (2008)

	M	M/MF %	MF	Age average
<b>Faculty of Sciences</b>	<b>12</b>	<b>80%</b>	<b>15</b>	<b>25</b>
Network Engineering and IT Systems	12	80%	15	25
<b>Faculty of Engineering</b>	<b>577</b>	<b>76%</b>	<b>763</b>	<b>25</b>
Civil Engineering	157	76%	206	25
Electrical and Computers Engineering	165	92%	179	25
Industrial Engineering and Management	26	57%	46	25
Informatics and Computing Engineering	112	93%	121	25
Mechanical Engineering	86	82%	105	27
Metallurgical and Materials Engineering	13	46%	28	26
Chemical Engineering	18	23%	78	25
<b>Faculty of Pharmacy</b>	<b>32</b>	<b>18%</b>	<b>173</b>	<b>24</b>
Pharmaceutical Sciences	32	18%	173	24
<b>Faculty of Medicine</b>	<b>60</b>	<b>33%</b>	<b>183</b>	<b>25</b>
Medicine	60	33%	183	25
<b>Faculty of Psychology and Education Science</b>	<b>12</b>	<b>11%</b>	<b>106</b>	<b>25</b>
Psychology	12	11%	106	25
<b>U.Porto Total</b>	<b>693</b>	<b>56%</b>	<b>1240</b>	<b>25</b>

Source: FAC – RAIDES/DIMAS

Table 16: Number of Integrated Master graduates, per grades, no. of enrolments and programme (2008)

	MF	Grades average	Average nb. of enrolments	Conclusion in N (%)
<b>Faculty of Sciences</b>	<b>15</b>	<b>13.6</b>	<b>6</b>	<b>53%</b>
Network Engineering and IT Systems	15	13.6	6	53%
<b>Faculty of Engineering</b>	<b>763</b>	<b>13.7</b>	<b>6</b>	<b>50%</b>
Civil Engineering	206	13.5	6	44%
Electrical and Computers Engineering	179	13.5	6	49%
Industrial Engineering and Management	46	14.4	6	63%
Informatics and Computing Engineering	121	14.4	6	56%
Mechanical Engineering	105	13.1	6	38%
Metallurgical and Materials Engineering	28	12.9	6	125%
Chemical Engineering	78	14.1	6	45%
<b>Faculty of Pharmacy</b>	<b>173</b>	<b>13.6</b>	<b>6</b>	<b>39%</b>
Pharmaceutical Sciences	173	13.6	6	39%
<b>Faculty of Medicine</b>	<b>183</b>	<b>15.0</b>	<b>6</b>	<b>83%</b>
Medicine	183	15.0	6	83%
<b>Faculty of Psychology and Education Science</b>	<b>106</b>	<b>15.3</b>	<b>5</b>	<b>75%</b>
Psychology	106	15.3	5	75%
<b>U.Porto Total</b>	<b>1240</b>	<b>14.0</b>	<b>6</b>	<b>56%</b>

Source: FAC – RAIDES/DIMAS

**Master graduates 2007/2008**

Chart 10: Number of Master graduates in 2008, per age

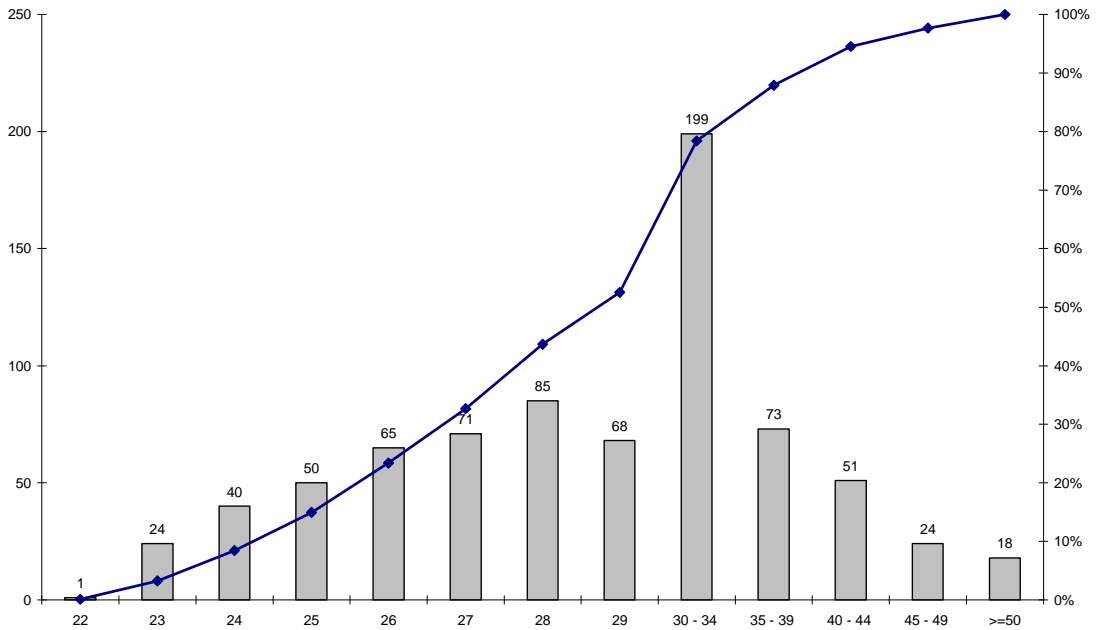


Chart 11: Number of Master graduates in 2008, per grades

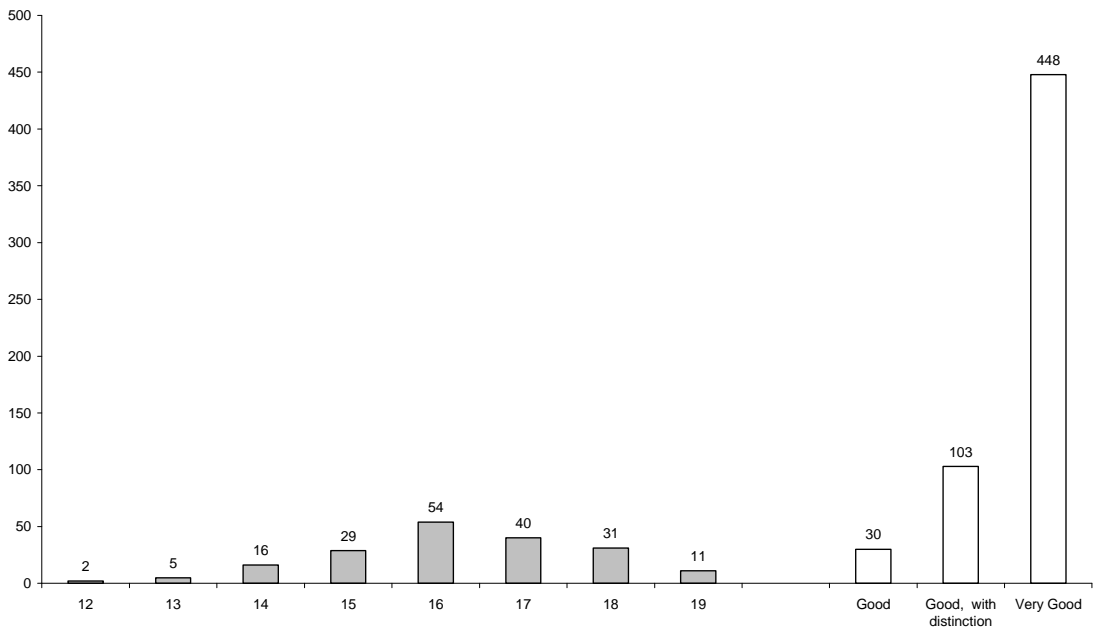


Chart 12: Number of Master graduates in 2008, per no. of enrolments

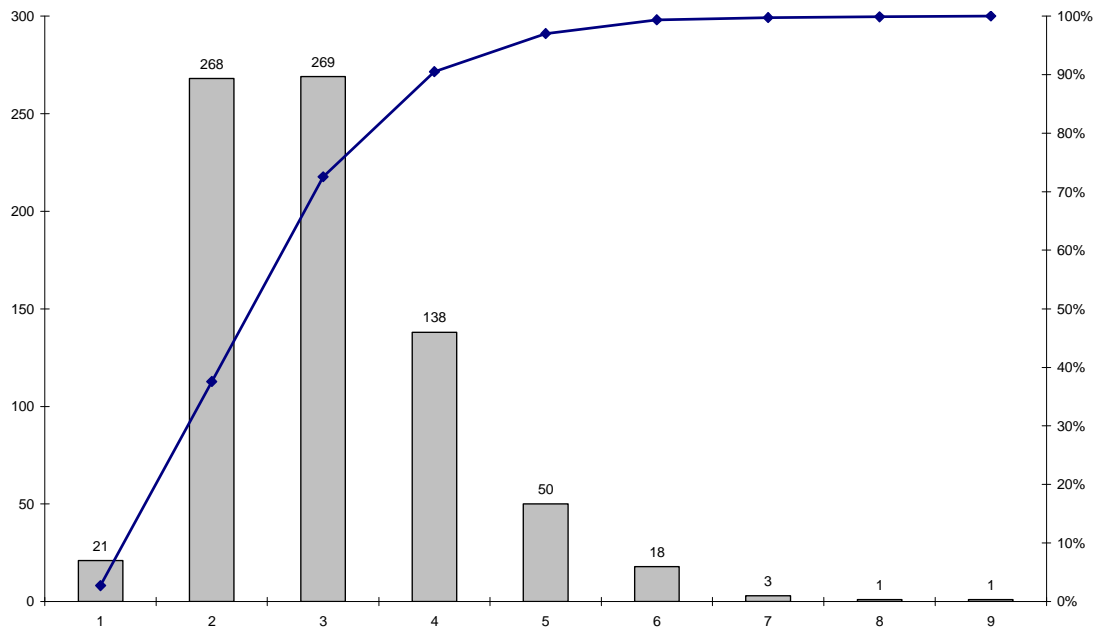


Table 17: Number of Master graduates, per gender and faculty/school (2008)

	M		M2		M+M2		
	M	MF	M	MF	M	MF	M/MF (%)
Faculty of Architecture		2			2	2	100%
Faculty of Fine Arts	6	17	17	41	23	58	40%
Faculty of Sciences	24	81	37	127	61	208	29%
Faculty of Nutrition and Food Science		6			6	6	100%
Faculty of Sport	40	77			40	77	52%
Faculty of Economics	22	56			22	56	39%
Faculty of Engineering	64	90	17	36	81	126	64%
Faculty of Pharmacy	4	15	2	6	6	21	29%
Faculty of Arts	14	39		2	14	41	34%
Faculty of Medicine	2	4	15	54	17	58	29%
Faculty of Dental Medicine	3	5			3	5	60%
Faculty of Psychology and Education Science	8	56	1	16	9	72	13%
Institute of Biomedical Sciences Abel Salazar	3	39			3	39	8%
<b>U.Porto Total</b>	<b>190</b>	<b>487</b>	<b>89</b>	<b>282</b>	<b>279</b>	<b>769</b>	<b>36%</b>

Source: FAC – RAIDES/DIMAS

Table 18: Number of Master graduates, per nationality and faculty/school (2008)

	FAUP	FBAUP	FCUP	FCNAUP	FADEUP	FEP	FEUP	FFUP	FLUP	FMUP	FMDUP	FPCEUP	ICBAS	U.Porto Total
Portugal	2	56	203	5	54	48	118	19	32	58	5	71	38	709
Brazil		1	2	1	21	3	5	2				1	1	37
Cape Verde			1			2			9					12
Romania						3								3
Spain							2							2
Peru					2									2
South Africa			1											1
Germany		1												1
Angola							1							1
Russian Federation			1											1
<b>Total</b>	<b>2</b>	<b>58</b>	<b>208</b>	<b>6</b>	<b>77</b>	<b>56</b>	<b>126</b>	<b>21</b>	<b>41</b>	<b>58</b>	<b>5</b>	<b>72</b>	<b>39</b>	<b>769</b>

Source: FAC – RAIDES/DIMAS

Table 19: Number of Master graduates, per gender, age and programme (2008)

	M		M2		M+M2			Age average
	M	MF	M	MF	M	M/MF (%)	MF	
<b>Faculty of Architecture</b>		2				0%	2	31
Environment Planning and Urban Project		2				0%	2	31
<b>Faculty of Fine Arts</b>	6	17	17	41	23	40%	58	32
Multimedia Art	6	17			6	35%	17	34
Image design			6	12	6	50%	12	30
Sculpture			1	1	1	100%	1	42
Artistic Studies			1	5	1	20%	5	35
Drawing Practice and Theory			1	3	1	33%	3	29
Contemporary Artistic Practices			8	20	8	40%	20	32
<b>Faculty of Sciences</b>	24	81	37	127	61	29%	208	28
Astronomy			2	2	2	100%	2	24
Bioinformatics	2	5			2	40%	5	29
Biology				14		0%	14	28
Developmental Biology and Plant Reproduction		2				0%	2	29
Biology and Water Quality Management			1	6	1	17%	6	36
Biochemistry			8	19	8	42%	19	24
Computer Science			2	2	2	100%	2	25
Environmental Sciences and Technology			5	22	5	23%	22	26
Remote Sensing	3	5			3	60%	5	32
Applied Ecology	4	9			4	44%	9	31
Landscape Ecology and Nature Preservation	1	3			1	33%	3	29
Ecology, Environment and Land			1	2	1	50%	2	25
Multimedia Education	3	9			3	33%	9	30
Geographical Engineering			6	8	6	75%	8	27
Mathematical Engineering			1	5	1	20%	5	25
Teaching Astronomy	3	5			3	60%	5	34
Teaching Mathematics	2	9			2	22%	9	30
Medical Physics			1	1	1	100%	1	26
Teaching Physics		1				0%	1	27
Forensic Genetics			1	2	1	50%	2	23
Teaching Geology		3				0%	3	31
Geomaterials and Geological Resources			1	7	1	14%	7	28
Hydrobiology		8				0%	8	29
Computer Science	5	6			5	83%	6	32
Modelling, Analysis and Optimisation of Industrial Processes			2	2	2	100%	2	25

	M		M2		M+M2			Age average
	M	MF	M	MF	M	M/MF (%)	MF	
Optoelectronic and Lasers		1				0%	1	33
Exploration and Evaluation of Geological Resources	1	3			1	33%	3	29
Chemistry		9	6	35	6	14%	44	28
Food Technology, Science and Safety		3				0%	3	34
<b>Faculty of Nutrition and Food Science</b>		<b>6</b>				<b>0%</b>	<b>6</b>	<b>37</b>
Clinical Nutrition		6				0%	6	37
<b>Faculty of Sport</b>	<b>40</b>	<b>77</b>			<b>40</b>	<b>52%</b>	<b>77</b>	<b>31</b>
Adapted Physical Activity	3	12			3	25%	12	31
Physical and Health Activities	2	4			2	50%	4	29
Physical Activity for the Elderly	2	7			2	29%	7	29
Sports Science	5	11			5	45%	11	31
Motor Skill Development	4	8			4	50%	8	34
Sports for Children and Youths	9	14			9	64%	14	32
Sports Management	6	10			6	60%	10	30
High-Yield Sports Training	9	11			9	82%	11	32
<b>Faculty of Economics</b>	<b>22</b>	<b>56</b>			<b>22</b>	<b>39%</b>	<b>56</b>	<b>31</b>
Data Analysis and Decision Support Systems	1	3			1	33%	3	27
Business Sciences	7	22			7	32%	22	32
Accountancy	2	4			2	50%	4	29
Development and Social Inclusion	1	2			1	50%	2	36
Economics	5	10			5	50%	10	29
Finances	2	5			2	40%	5	30
Marketing	4	10			4	40%	10	33
<b>Faculty of Engineering</b>	<b>64</b>	<b>90</b>	<b>17</b>	<b>36</b>	<b>81</b>	<b>64%</b>	<b>126</b>	<b>31</b>
Automation, Instrumentation and Control	6	6			6	100%	6	32
Building Construction	1	3			1	33%	3	31
Industrial Design			4	9	4	44%	9	36
Biomedical Engineering			7	15	7	47%	15	29
Occupational Safety and Hygiene Engineering			5	8	5	63%	8	34
Environmental Engineering	6	11			6	55%	11	32
Electrical and Computer Engineering	5	9			5	56%	9	29
Informatics Engineering	5	5			5	100%	5	30
Mechanical Engineering	5	7			5	71%	7	30
Civil Engineering Structures	12	12			12	100%	12	31
Fundamentals and Applications of Fluid Mechanics	1	1			1	100%	1	27
Information Management	1	3			1	33%	3	32

	M		M2		M+M2			
	M	MF	M	MF	M	M/MF (%)	MF	Age average
Innovation and Technological Entrepreneurship			1	4	1	25%	4	32
Industrial Maintenance	1	3			1	33%	3	33
Computational Methods in Science and Engineering	1	1			1	100%	1	37
Environment Planning and Urban Project	4	5			4	80%	5	35
Buildings Rehabilitation	5	9			5	56%	9	29
Communication Networks and Services	2	2			2	100%	2	30
Multimedia Technology	7	9			7	78%	9	32
Transports	2	4			2	50%	4	35
<b>Faculty of Pharmacy</b>	<b>4</b>	<b>15</b>	<b>2</b>	<b>6</b>	<b>6</b>	<b>29%</b>	<b>21</b>	<b>30</b>
Clinical Analyses			2	6	2	33%	6	30
Quality Control	2	6			2	33%	6	28
Environmental Analytical Chemistry		3				0%	3	31
Pharmaceutical Technology	2	6			2	33%	6	33
<b>Faculty of Arts</b>	<b>14</b>	<b>39</b>		<b>2</b>	<b>14</b>	<b>34%</b>	<b>41</b>	<b>36</b>
African Studies	7	11			7	64%	11	42
German Studies		1				0%	1	32
Anglo-American Studies				1		0%	1	51
Contemporary History	2	4			2	50%	4	28
History of Education	1	6			1	17%	6	39
History of Art in Portugal	2	6			2	33%	6	31
Linguistics				1		0%	1	38
Comparative Literature and Culture		2				0%	2	39
Modern and Contemporary Portuguese Literature	2	5			2	40%	5	35
Sociology: Contemporary Portuguese Society, Structures and Dynamics		2				0%	2	29
Terminology and Translation		1				0%	1	28
Drama Text		1				0%	1	44
<b>Faculty of Medicine</b>	<b>2</b>	<b>4</b>	<b>15</b>	<b>54</b>	<b>17</b>	<b>29%</b>	<b>58</b>	<b>32</b>
Bioethics			1	8	1	13%	8	31
Forensic Sciences			4	11	4	36%	11	34
Epidemiology				3		0%	3	36
Emergency Medicine	2	2			2	100%	2	39
Medicine and Molecular Oncology			4	21	4	19%	21	29
Molecular Oncology		2				0%	2	28
Public Health			6	11	6	55%	11	33
<b>Faculty of Dental Medicine</b>	<b>3</b>	<b>5</b>			<b>3</b>	<b>60%</b>	<b>5</b>	<b>34</b>
Conserving Dental Medicine		1				0%	1	29

	M		M2		M+M2			Age average
	M	MF	M	MF	M	M/MF (%)	MF	
Orthodontics	3	4			3	75%	4	36
<b>Faculty of Psychology and Education Science</b>	<b>8</b>	<b>56</b>	<b>1</b>	<b>16</b>	<b>9</b>	<b>13%</b>	<b>72</b>	<b>32</b>
Education Sciences	2	18		1	2	11%	19	36
Development Studies in Social and Educational Sciences		3				0%	3	31
Psychology	6	35			6	17%	35	32
Psychology Topics			1	15	1	7%	15	25
<b>Institute of Biomedical Sciences Abel Salazar</b>	<b>3</b>	<b>39</b>			<b>3</b>	<b>8%</b>	<b>39</b>	<b>36</b>
Nursing Sciences	1	14			1	7%	14	39
Sea Sciences – Marine Resources	1	5			1	20%	5	33
Social Service Sciences		1				0%	1	30
Forensic Medicine		8				0%	8	33
Oncology	1	11			1	9%	11	35
<b>U.Porto Total</b>	<b>190</b>	<b>487</b>	<b>89</b>	<b>282</b>	<b>279</b>	<b>36%</b>	<b>769</b>	<b>31</b>

Source: FAC – RAIDES/DIMAS

## Specialisation graduates 2007/2008

Chart 13: Number of Specialisation graduates in 2008, per age

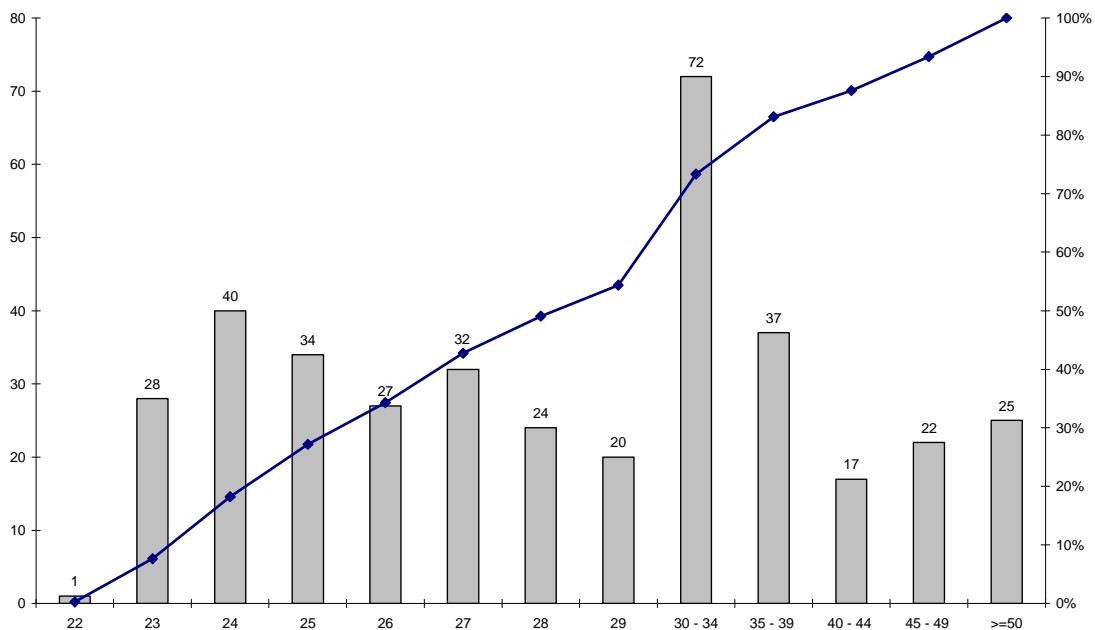




Chart 14: Number of Specialisation graduates in 2008, per grades

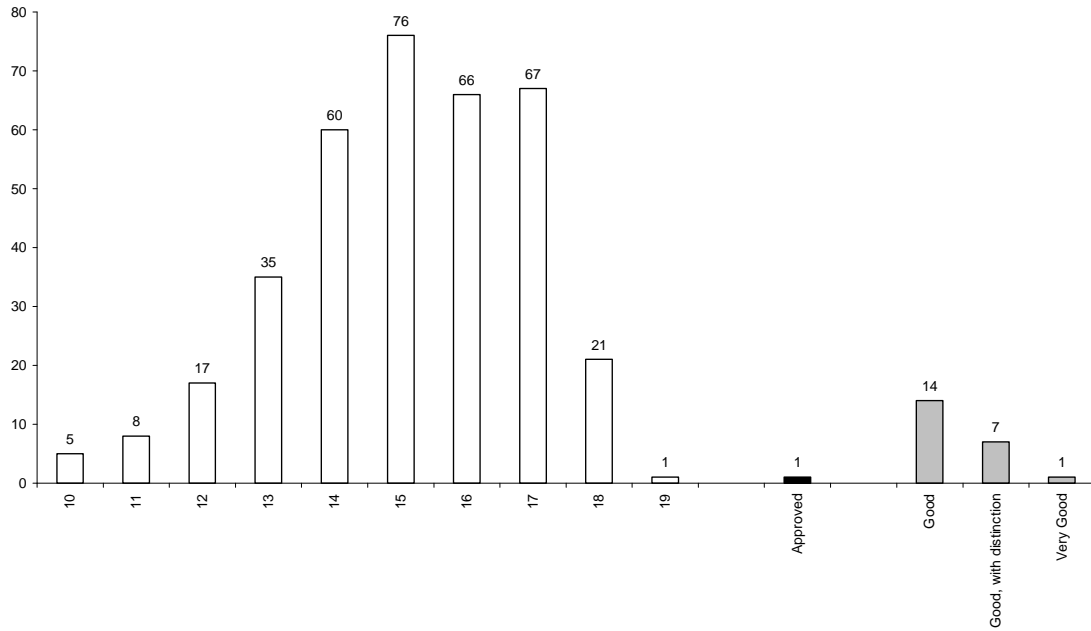


Chart 15: Number of Specialisation graduates in 2008, per no. of enrolments

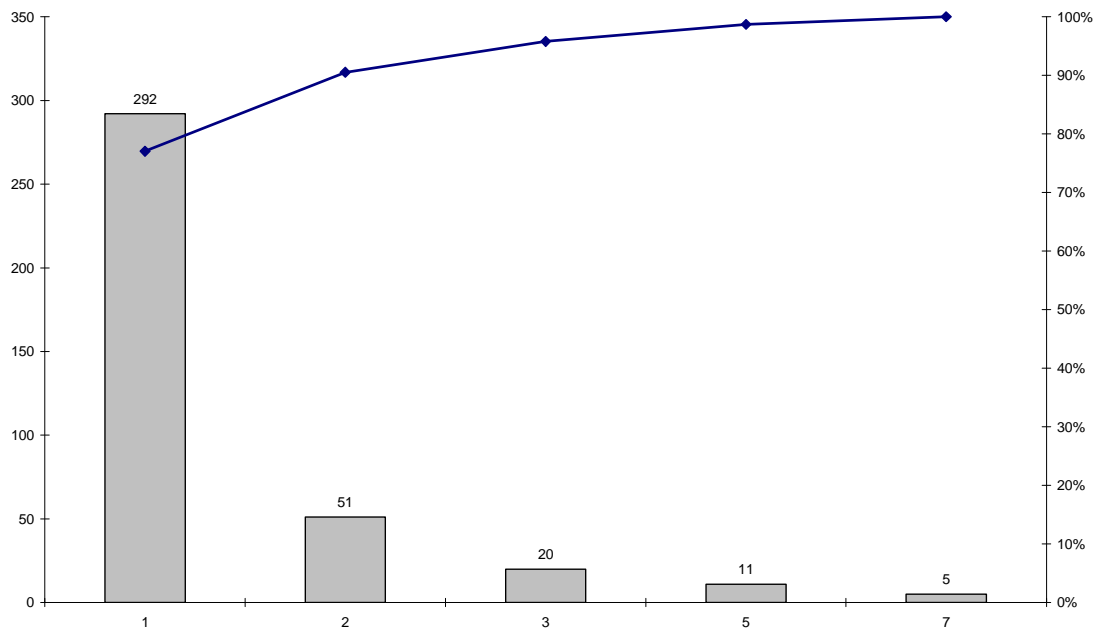


Table 20: Number of Specialisation graduates, per gender and faculty/school (2008)

	M	M/MF (%)	MF
Faculty of Sciences		0%	8
Faculty of Law	20	49%	41
Faculty of Engineering	3	75%	4
Faculty of Arts	25	18%	142
Faculty of Medicine	73	50%	146
Faculty of Dental Medicine	1	25%	4
Faculty of Psychology and Education Science	3	9%	34
<b>U.Porto Total</b>	<b>125</b>	<b>33%</b>	<b>379</b>

Source: FAC – RAIDES/DIMAS

Table 21: Number of Specialisation graduates, per nationality and faculty/school (2008)

	FCUP	FDUP	FEUP	FLUP	FMUP	FMDUP	FPCEUP	U.Porto Total
Portugal	8	41	4	140	142	4	33	372
Spain					4			4
Belgium				1				1
France				1				1
Venezuela							1	1
<b>Total</b>	<b>8</b>	<b>41</b>	<b>4</b>	<b>142</b>	<b>146</b>	<b>4</b>	<b>34</b>	<b>379</b>

Source: FAC – RAIDES/DIMAS

Table 22: Number of Specialisation graduates, per gender, age and programme (2008)

	M	M/MF (%)	MF	Age average
<b>Faculty of Sciences</b>		<b>0%</b>	<b>8</b>	<b>32</b>
Mathematics for Teachers		0%	8	32
<b>Faculty of Law</b>	<b>20</b>	<b>49%</b>	<b>41</b>	<b>33</b>
Local Authorities Law	8	35%	23	34
Tax Law	12	67%	18	32
<b>Faculty of Engineering</b>	<b>3</b>	<b>75%</b>	<b>4</b>	<b>35</b>
Electrical and Computer Engineering	1	100%	1	33
Mechanical Engineering		0%	1	28
Information Management	1	100%	1	43
Industrial Maintenance	1	100%	1	35
<b>Faculty of Arts</b>	<b>25</b>	<b>18%</b>	<b>142</b>	<b>28</b>
Teaching	23	18%	125	28
Translation	2	12%	17	28
<b>Faculty of Medicine</b>	<b>73</b>	<b>50%</b>	<b>146</b>	<b>35</b>
Climatology and Hydrology	9	41%	22	34
Health Education		0%	13	35
Pain Medicine	8	36%	22	33
Sports Medicine	21	72%	29	30
Occupational Medicine	21	62%	34	41
Orthodontics: Basis, Fundamentals and Practice	7	44%	16	31
Oral and Extra-oral Rehabilitation with Osseointegrated Implants	7	70%	10	36
<b>Faculty of Dental Medicine</b>	<b>1</b>	<b>25%</b>	<b>4</b>	<b>29</b>
Periodontology	1	25%	4	29
<b>Faculty of Psychology and Education Science</b>	<b>3</b>	<b>9%</b>	<b>34</b>	<b>36</b>
Political Psychology	3	9%	34	36
<b>U.Porto Total</b>	<b>125</b>	<b>33%</b>	<b>379</b>	<b>32</b>

Source: FAC – RAIDES/DIMAS

**Doctorate graduates 2007/2008**

Chart 16: Number of Doctorate graduates in 2008, per age

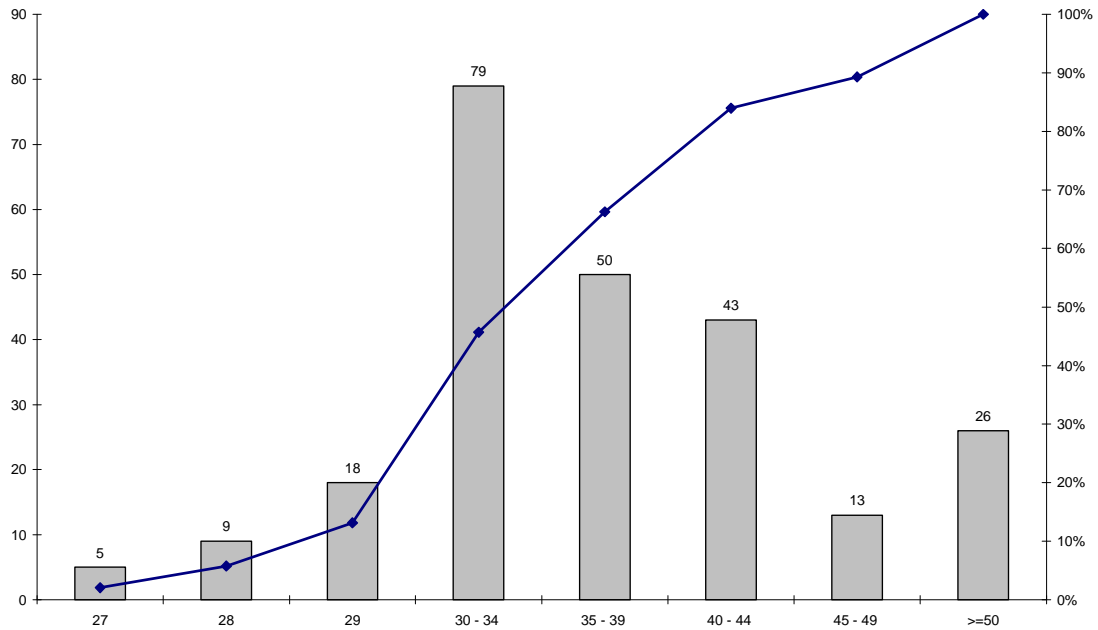


Chart 17: Number of Doctorate graduates in 2008, per grades

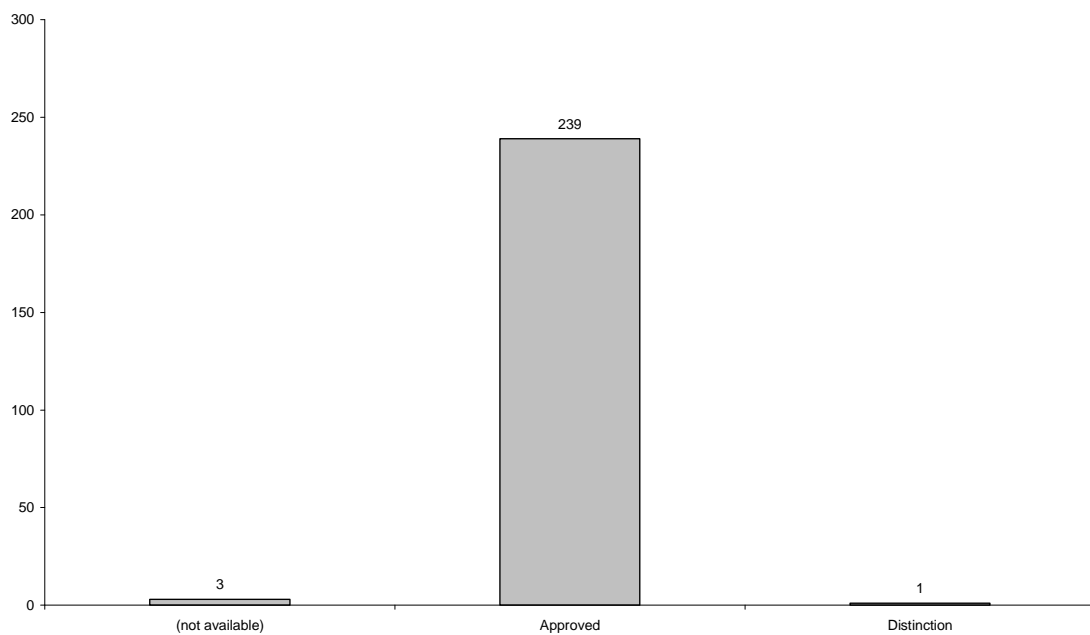


Chart 18: Number of Doctorate graduates in 2008, per no. of enrolments

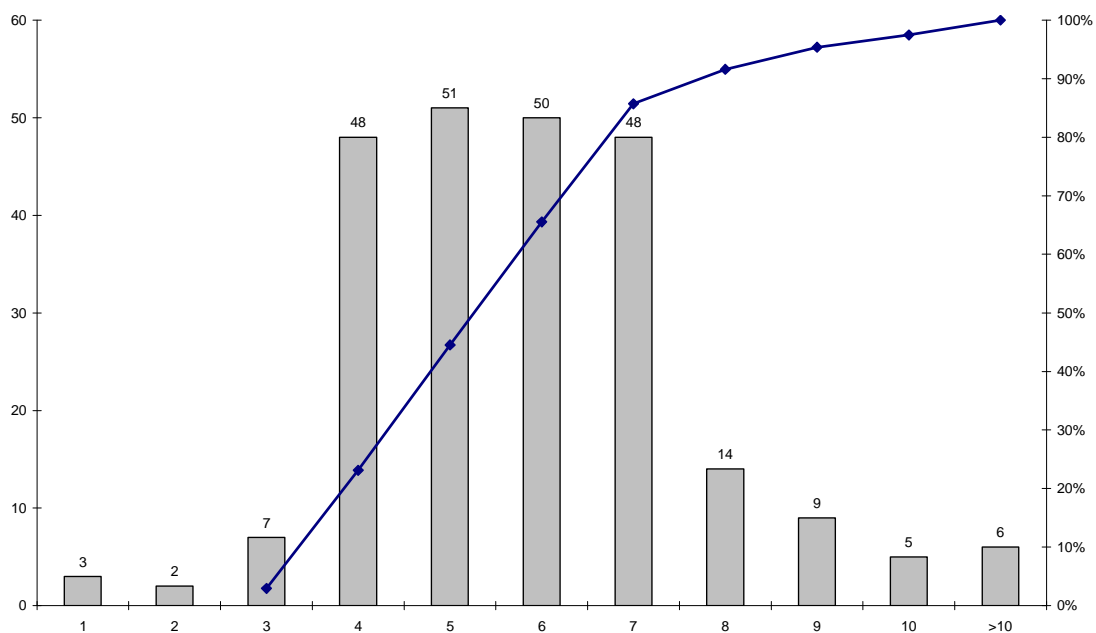


Table 23: Number of Doctorate graduates, per gender, age and faculty/school (2008)

	D		D3		D+D3		
	M	MF	M	MF	M	M/MF (%)	MF
Faculty of Architecture	2	3			2	67%	3
Faculty of Fine Arts	2	2			2	100%	2
Faculty of Sciences	14	33			14	42%	33
Faculty of Nutrition and Food Science	1	2			1	50%	2
Faculty of Sport	7	11			7	64%	11
Faculty of Economics	10	13			10	77%	13
Faculty of Engineering	37	61	2	3	39	61%	64
Faculty of Pharmacy	2	9			2	22%	9
Faculty of Arts	11	20			11	55%	20
Faculty of Medicine	10	16			10	63%	16
Faculty of Psychology and Education Science	2	15			2	13%	15
Institute of Biomedical Sciences Abel Salazar	22	55			22	40%	55
<b>U.Porto Total</b>	<b>120</b>	<b>240</b>	<b>2</b>	<b>3</b>	<b>122</b>	<b>50%</b>	<b>243</b>

Source: FAC – RAIDES/DIMAS

Table 24: Number of Doctorate graduates, per nationality and faculty/school (2008)

	FAUP	FBAUP	FCUP	FCNAUP	FADEUP	FEP	FEUP	FFUP	FLUP	FMUP	FPCEUP	ICBAS	U.Porto Total
Portugal	3	2	31	1	6	13	58	9	19	16	15	53	226
Brazil			1	1	5		3						10
Thailand									1			2	3
Colombia							1						1
France							1						1
Mozambique			1										1
Romania							1						1
<b>Total</b>	<b>3</b>	<b>2</b>	<b>33</b>	<b>2</b>	<b>11</b>	<b>13</b>	<b>64</b>	<b>9</b>	<b>20</b>	<b>16</b>	<b>15</b>	<b>55</b>	<b>243</b>

Source: FAC – RAIDES/DIMAS

Table 25: Number of Doctorate graduates, per gender, age and programme/field of knowledge (2008)

	D		D3		D+D3			Age average
	M	MF	M	MF	M	M/MF (%)	MF	
<b>Faculty of Architecture</b>	<b>2</b>	<b>3</b>			<b>2</b>	<b>67%</b>	<b>3</b>	<b>38</b>
Architecture	2	3			2	67%	3	38
<b>Faculty of Fine Arts</b>	<b>2</b>	<b>2</b>			<b>2</b>	<b>100%</b>	<b>2</b>	<b>51</b>
Communication Design	2	2			2	100%	2	51
<b>Faculty of Sciences</b>	<b>14</b>	<b>33</b>			<b>14</b>	<b>42%</b>	<b>33</b>	<b>34</b>
Landscape Architecture		1				0%	1	34
Astronomy	2	3			2	67%	3	30
Biology	2	8			2	25%	8	35
Agricultural Sciences		1				0%	1	30
Computer Sciences	2	2			2	100%	2	36
Environmental Sciences and Technology		2				0%	2	34
Geographical Engineering		1				0%	1	40
Physics	1	1			1	100%	1	29
Geology	1	1			1	100%	1	35
Mathematics	1	1			1	100%	1	32
Applied Mathematics	2	4			2	50%	4	37
Chemistry	3	8			3	38%	8	31
<b>Faculty of Nutrition and Food Science</b>	<b>1</b>	<b>2</b>			<b>1</b>	<b>50%</b>	<b>2</b>	<b>34</b>
Human Nutrition	1	2			1	50%	2	34
<b>Faculty of Sport</b>	<b>7</b>	<b>11</b>			<b>7</b>	<b>64%</b>	<b>11</b>	<b>45</b>
Sports Science	7	11			7	64%	11	45
<b>Faculty of Economics</b>	<b>10</b>	<b>13</b>			<b>10</b>	<b>77%</b>	<b>13</b>	<b>39</b>
Business Sciences	5	7			5	71%	7	37
Economics	5	6			5	83%	6	41
<b>Faculty of Engineering</b>	<b>37</b>	<b>61</b>	<b>2</b>	<b>3</b>	<b>39</b>	<b>61%</b>	<b>64</b>	<b>36</b>
Engineering Sciences	7	15			7	47%	15	37
Biomedical Engineering			1	1	1	100%	1	36
Civil Engineering	3	8			3	38%	8	36
Electrical and Computer Engineering	10	14		1	10	67%	15	37
Industrial Engineering and Management	1	1	1	1	2	100%	2	32
Informatics Engineering		1				0%	1	38
Mechanical Engineering	9	9			9	100%	9	37
Chemical and Biological Engineering	7	13			7	54%	13	34
<b>Faculty of Pharmacy</b>	<b>2</b>	<b>9</b>			<b>2</b>	<b>22%</b>	<b>9</b>	<b>33</b>

	D		D3		D+D3			
	M	MF	M	MF	M	M/MF (%)	MF	Age average
Biochemistry		1				0%	1	29
Pharmacology		1				0%	1	38
Analytical Chemistry	1	3			1	33%	3	30
Pharmaceutical Technology	1	3			1	33%	3	37
Toxicology		1				0%	1	27
<b>Faculty of Arts</b>	<b>11</b>	<b>20</b>			<b>11</b>	<b>55%</b>	<b>20</b>	<b>44</b>
Medieval and Renaissance Studies	1	1			1	100%	1	32
Arts	10	19			10	53%	19	44
<b>Faculty of Medicine</b>	<b>10</b>	<b>16</b>			<b>10</b>	<b>63%</b>	<b>16</b>	<b>37</b>
Human Biology	5	10			5	50%	10	33
Medicine	5	5			5	100%	5	44
Public Health		1				0%	1	34
<b>Faculty of Psychology and Education Science</b>	<b>2</b>	<b>15</b>			<b>2</b>	<b>13%</b>	<b>15</b>	<b>39</b>
Psychology	2	15			2	13%	15	39
<b>Institute of Biomedical Sciences Abel Salazar</b>	<b>22</b>	<b>55</b>			<b>22</b>	<b>40%</b>	<b>55</b>	<b>38</b>
Biomedical Sciences	9	26			9	35%	26	31
Nursing Sciences	6	12			6	50%	12	45
Aquatic Sciences	1	3			1	33%	3	33
Social Service Sciences		1				0%	1	59
Medical Sciences	5	9			5	56%	9	47
Veterinary Sciences		1				0%	1	33
Mental Health	1	3			1	33%	3	46
<b>U.Porto Total</b>	<b>120</b>	<b>240</b>	<b>2</b>	<b>3</b>	<b>122</b>	<b>50%</b>	<b>243</b>	<b>38</b>

Source: FAC – RAIDES/DIMAS