

Education

_ Students enrolled in the U.Porto in 2008

University of Porto. Rectory

Continuous Improvement Service. 17 June 2009

Table of Contents

Students enrolled in the University of Porto	3
Enrolments – Growth from 2004/2005 to 2008/2009.....	3
Table 1: Growth in 2004-2008 of the number of students enrolled, per degree category.....	3
Chart 1: Growth in 2004-2008 of the number of students enrolled, per degree category.....	3
Table 2: Growth in 2004-2008 of the number of students enrolled in undergraduate, 1 st cycle and integrated masters programmes, per faculty/school.....	4
Table 3: Growth in 2004-2008 of the number of students enrolled in masters and 2 nd cycle programmes, per faculty/school	4
Table 4: Growth in 2004-2008 of the number of students enrolled in specialisation programmes, per faculty/school.....	5
Table 5: Growth in 2004-2008 of the number of students enrolled in doctorate and 3 rd cycle programmes, per faculty/school	5
Students enrolled in 2008/2009.....	6
Table 6: Number of students enrolled in 2008, per degree category and faculty/school	6
Chart 2: Proportion of students enrolled in 2008, per gender and degree category	6
Chart 3: Proportion of students enrolled in 2008, per nationality and degree category	7
Table 7: Number of students enrolled in 2008, per nationality and degree category.....	7
Table 8: Number of new students enrolled in 2008, per degree category and faculty/school.....	9
Table 9: Number of students enrolled in 2008 in the 1 st year for the 1 st time, per degree category and faculty/school.....	10
Students enrolled in undergraduate, 1st cycle and integrated masters programmes in 2008/2009.....	10
Table 10: Number of students enrolled in undergraduate, 1 st cycle and integrated masters programmes, per gender and faculty/school (2008)	10
Chart 4: Number of students enrolled in undergraduate, 1 st cycle and integrated masters programmes, per age (2008).....	11
Table 11: Number of new students enrolled in undergraduate, 1 st cycle and integrated masters programmes, per admission scheme in 2008.....	11
Table 12: Number of students enrolled in undergraduate, 1 st cycle and integrated masters programmes, per nationality and faculty/school (2008)	12
Table 13: Number of students enrolled in undergraduate, 1 st cycle and integrated masters programmes, per country of conclusion of their last qualification (2008)	14

Table 14: Number of students enrolled in undergraduate, 1 st cycle and integrated masters programmes, per gender and programme (2008)	15
Chart 5: Proportion of students enrolled in undergraduate, 1 st cycle and integrated masters programmes, in the year <i>n</i> of the programme with <i>n</i> , <i>n</i> +1, <i>n</i> +2 e <i>n</i> +3 or more enrolments (2008).....	17
Table 15: Number of students enrolled, number of students enrolled in the 1 st year for the 1 st time and proportion of those enrolled in the year <i>N</i> with <i>N</i> enrolments in undergraduate, 1 st cycle and integrated masters programmes, per programme (2008)	18
Students enrolled in masters and 2nd cycle programmes in 2008/2009	20
Table 16: Number of students enrolled in masters and 2 nd cycle programmes, per gender and faculty/school (2008)	20
Chart 6: Number of students enrolled in masters and 2 nd cycle programmes, per age (2008)	21
Table 17: Number of students enrolled in masters and 2 nd cycle programmes, per nationality and faculty/school (2008)	22
Table 18: Number of students enrolled in masters and 2 nd cycle programmes, per country of conclusion of their last qualification (2008).....	24
Table 19: Number of students enrolled in masters and 2 nd cycle programmes, per gender and programme (2008).....	25
Table 20: Number of students enrolled and number of students enrolled in the 1 st year for the 1 st time in masters and 2 nd cycle programmes, per programme (2008)	30
Students enrolled in specialisation programmes in 2008/2009	36
Table 21: Number of students enrolled in specialisation programmes, per gender and faculty/school (2008)	36
Chart 7: Number of students enrolled in specialisation programmes, per age (2008)	37
Table 22: Number of students enrolled in specialisation programmes, per nationality and faculty/school (2008)	37
Table 23: Number of students enrolled in specialisation programmes, per country of conclusion of their last qualification (2008)	37
Table 24: Number of students enrolled in specialisation programmes, per gender and programme (2008)	38
Table 25: Number of students enrolled and number of students enrolled in the 1 st year for the 1 st time in specialisation programmes, per programme (2008)	39
Students enrolled in doctorate and 3rd cycle programmes in 2008/2009	40
Table 26: Number of students enrolled in doctorate and 3 rd cycle programmes, per gender and faculty/school (2008)	40
Chart 8: Number of students enrolled in doctorate and 3 rd cycle programmes, per age (2008)	40
Table 27: Number of students enrolled in doctorate and 3 rd cycle programmes, per nationality and faculty/school (2008)	41
Table 28: Number of students enrolled in doctorate and 3 rd cycle programmes, per country of conclusion of their last qualification (2008).....	43
Table 29: Number of students enrolled in doctorate and 3 rd cycle programmes, per gender and programme/field of knowledge (2008)	44
Table 30: Number of students enrolled and number of students enrolled in the 1 st year for the 1 st time in doctorate and 3 rd cycle programmes, per programme/field of knowledge (2008)	47
Sources and acronyms.....	50

Students enrolled in the University of Porto

The data refers to the situation as at 31 December of each academic year. Therefore, as an example, the data identified as 2008 refers to the 2008-2009 academic year, as at 31 December 2008.

Unless otherwise stated, the source of the data shown is the Academic and Training Organisation Services of the Rectory of the University of Porto – Reply from the U.Porto to the Survey on the Register of Enrolled and Graduate Students in Higher Education (RAIDES/DIMAS).

Enrolments – Growth from 2004/2005 to 2008/2009

Table 1: Growth in 2004-2008 of the number of students enrolled, per degree category

	2004	2005	2006	2007	2008	Relative difference 2008/2004
Undergraduate, 1 st cycle and Integrated Masters	22542*	21839*	21853*	22477	22220	-1%
<i>Undergraduate, 1st cycle</i>	22542*	21839*	17273*	11977	10015	--
<i>Integrated Masters</i>			4580*	10500	12205	--
Masters and 2 nd cycle	1836*	1777*	3421	3845	4933	169%
Specialisation	520*	830*	821*	530	468	-10%
Doctorate and 3 rd cycle	1476	1666*	1721*	2049	2275	54%
Total U.Porto	26374	26112	27816	28901	29896	13%

Sources: FAC – RAIDES/DIMAS except *: OCES – DIMAS (M)

Chart 1: Growth in 2004-2008 of the number of students enrolled, per degree category

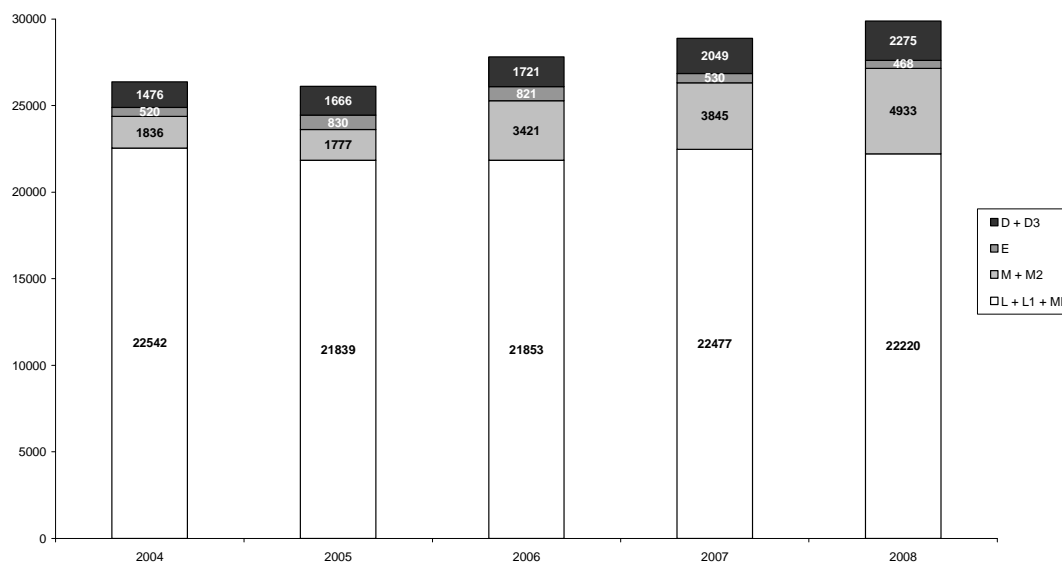


Table 2: Growth in 2004-2008 of the number of students enrolled in undergraduate, 1st cycle and integrated masters programmes, per faculty/school

	2004	2005*	2006 *		2007		2008		Relative difference 2008/2004	
	*		L + L1	L + L1+ MI	L + L1	L + L1+ MI	L + L1	L + L1+ MI	(1)	(2)
							(1)	(2)	(1)	(2)
FAUP	1084	1092	1044	1044	1010	1010	74	935	-93%	-14%
FBAUP	725	691	698	698	681	681	612	612	-16%	-16%
FCUP	3066	2989	2884	2884	2555	2846	2305	2663	-25%	-13%
FCNAUP	314	313	346	346	373	373	395	395	26%	26%
FADEUP	789	779	796	796	828	828	907	907	15%	15%
FDUP	696	718	777	777	743	743	817	817	17%	17%
FEP	2497	2378	2257	2257	2153	2153	2101	2101	-16%	-16%
FEUP	5164	5034	556	5136	85	5669	82	5825	-98%	13%
FFUP	839	904	983	983	0	1029	0	1133	-100%	35%
FLUP	3673	3130	2992	2992	2968	2968	2395	2395	-35%	-35%
FMUP	1229	1315	1376	1376	0	1458	0	1554	-100%	26%
FMDUP	348	349	341	341	91	404	39	436	-89%	25%
FPCEUP	964	916	903	903	233	896	205	910	-79%	-6%
ICBAS	1154	1231	1320	1320	257	1419	83	1537	-93%	33%
Total U.Porto	2254	2183	17273	21853	11977	22477	10015	22220	-56%	-1%

Sources: FAC – RAIDES/DIMAS except *; *: OCES – DIMAS (M)

Table 3: Growth in 2004-2008 of the number of students enrolled in masters and 2nd cycle programmes, per faculty/school

	2004*	2005*	2006	2007	2008	Rel. difference 2008/2004
FAUP	33	2	37	32	18	-45%
FBAUP	20	38	147	157	153	665%
FCUP	247	254	384	524	684	177%
FCNAUP	42	24	34	40	42	0%
FADEUP	148	190	397	347	459	210%
FDUP	0	0	0	0	140	--
FEP	190	202	340	396	641	237%
FEUP	277	310	591	542	571	106%
FFUP	31	30	56	101	88	184%
FLUP	311	171	174	493	841	170%
FMUP	199	195	490	508	434	118%
FMDUP	16	22	12	21	47	194%
FPCEUP	133	139	331	402	471	254%
ICBAS	122	149	356	234	344	182%
EGP	67	51	72	48	0	--
Total U.Porto	1836	1777	3421	3845	4933	169%

Sources: FAC – RAIDES/DIMAS except *; *: OCES – DIMAS (M)

Table 4: Growth in 2004-2008 of the number of students enrolled in specialisation programmes, per faculty/school

	2004*	2005*	2006*	2007	2008	Rel. difference 2008/2004
FAUP	0	0	0	0	0	--
FBAUP	0	0	0	0	0	--
FCUP	11	48	48	0	10	-9%
FCNAUP	0	0	0	0	0	--
FADEUP	0	0	0	0	0	--
FDUP	120	123	128	69	30	-75%
FEP	0	0	0	0	0	--
FEUP	146	121	96	16	26	-82%
FFUP	10	16	25	0	0	--
FLUP	66	323	297	193	153	132%
FMUP	147	157	191	195	178	21%
FMDUP	4	6	4	8	4	0%
FPCEUP	16	36	32	49	0	--
ICBAS	0	0	0	0	67	--
Total U.Porto	520	830	821	530	468	-10%

Sources: FAC – RAIDES/DIMAS except *: OCES – DIMAS (M)

Table 5: Growth in 2004-2008 of the number of students enrolled in doctorate and 3rd cycle programmes, per faculty/school

	2004	2005*	2006*	2007	2008	Rel. difference 2008/2004
FAUP	38	29	26	20	47	24%
FBAUP	0	13	19	32	35	--
FCUP	205	209	255	253	291	42%
FCNAUP	7	11	9	12	12	71%
FADEUP	70	86	84	116	128	83%
FDUP	10	12	11	12	11	10%
FEP	75	74	93	97	117	56%
FEUP	436	363	395	503	500	15%
FFUP	56	66	76	77	85	52%
FLUP	45	189	150	211	332	638%
FMUP	110	162	151	241	191	74%
FMDUP	13	16	19	20	19	46%
FPCEUP	161	195	148	164	198	23%
ICBAS	250	241	285	291	309	24%
Total U.Porto	1476	1666	1721	2049	2275	54%

Sources: FAC – RAIDES/DIMAS except *: OCES – DIMAS (M)

Students enrolled in 2008/2009

Table 6: Number of students enrolled in 2008, per degree category and faculty/school

	L	L1	MI	M	M2	E	D	D3	Total	%
FAUP	74		861	18			12	35	1000	3%
FBAUP		612		2	151		35		800	3%
FCUP	218	2087	358	2	682	10	205	86	3648	12%
FCNAUP		395		16	26		12		449	2%
FADEUP	291	616		215	244		111	17	1494	5%
FDUP	7	810			140	30	11		998	3%
FEP	524	1577		125	516		65	52	2859	10%
FEUP	5	77	5743	140	431	26	188	312	6922	23%
FFUP			1133	14	74		85		1306	4%
FLUP	40	2355		78	763	153	151	181	3721	12%
FMUP			1554	3	431	178	91	100	2357	8%
FMDUP	39		397	11	36	4	19		506	2%
FPCEUP		205	705	122	349		126	72	1579	5%
ICBAS	3	80	1454	225	119	67	275	34	2257	8%
Total U.Porto	1201	8814	12205	971	3962	468	1386	889	29896	100%
	4%	29%	41%	3%	13%	2%	5%	3%	100%	

Source: FAC – RAIDES/DIMAS

Chart 2: Proportion of students enrolled in 2008, per gender and degree category

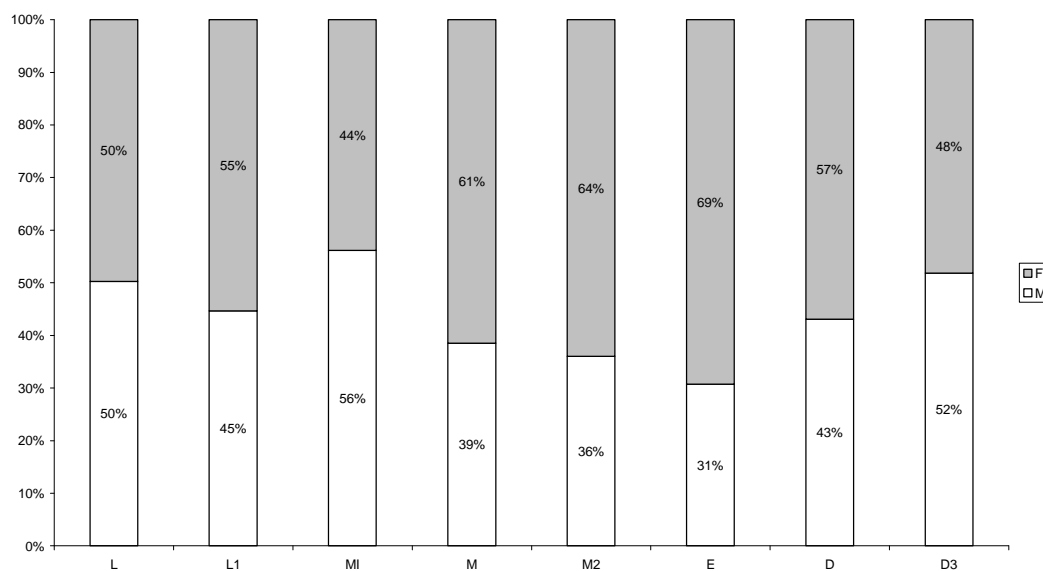


Chart 3: Proportion of students enrolled in 2008, per nationality and degree category

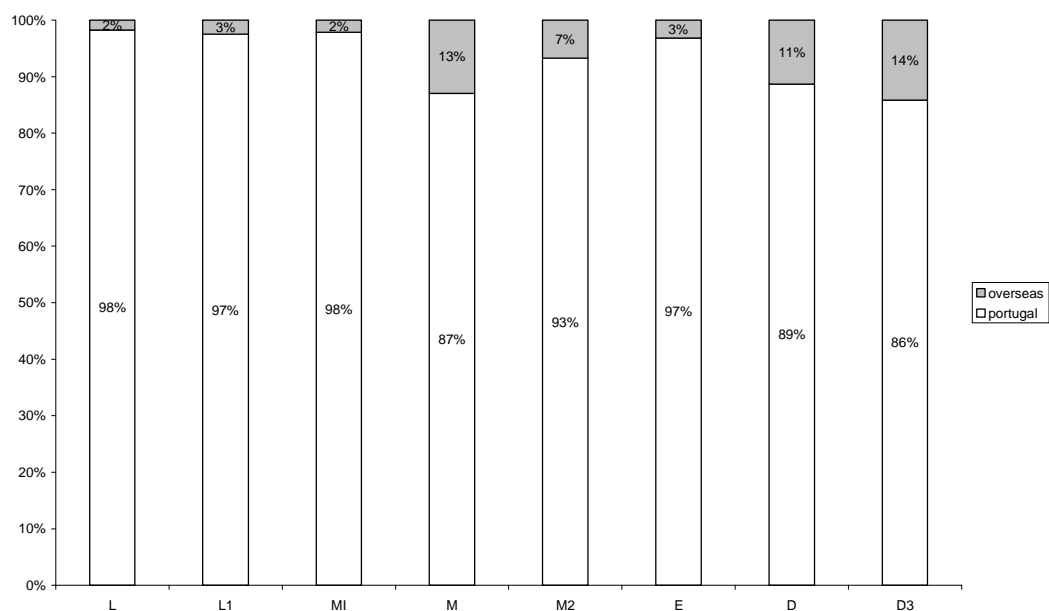


Table 7: Number of students enrolled in 2008, per nationality and degree category

	L	L1	MI	M	M2	E	D	D3	Total U.Porto
Portugal	1180	8593	11941	845	3694	453	1229	763	28698
Brazil	4	65	63	86	164	4	89	66	541
Cape Verde	6	50	68	24	15	1	2		166
Angola	2	15	17	1	10		3	2	50
France	2	13	18	3	7		3	2	48
Spain	1	3	7		4	7	10	5	37
Mozambique	2	4	8	1	12		5	3	35
Sao Tome and Principe		6	14	1	6				27
Italy		2	4	1	5	1	4	3	20
Venezuela		4	8		6		1	1	20
Ukraine		12	5						17
Germany	1	5	1	1	3		2	2	15
China		1	6	1	3		2	2	15
Guinea Bissau		6	3	1	4	1			15
Russian Federation		6	3				3	1	13
Romania				1	5		2	5	13
United States		2	6		1		1	2	12
South Africa		6	4						10
Switzerland		3	5		1				9
East Timor	2	1	2		3				8
Cuba							6	2	8
Poland		1	2	1	2		1		7
Thailand							6	1	7

	L	L1	MI	M	M2	E	D	D3	Total U.Porto
United Kingdom		3	1		2				6
India			1				1	4	6
Belarus		2	2				1		5
Mexico					4			1	5
Turkey			1		1		2	1	5
Colombia				2			1	2	5
Iran (Islamic Republic of)								5	5
Bulgaria			4						4
Greece						1		3	4
Israel			1					3	4
Argentina		1		1	1				3
Austria							2	1	3
Belgium							3		3
Luxembourg			2		1				3
Pakistan							1	2	3
Netherlands		1	1				1		3
Serbia and Montenegro					2				2
Swaziland		2							2
Finland		2							2
Australia		1					1		2
Panama			1	1					2
Bangladesh			1					1	2
Canada			2						2
Moldova (Republic of)					2				2
Croatia								2	2
Korea (Republic of)			1						1
Congo							1		1
Guinea			1						1
Czech Republic							1		1
Ecuador								1	1
Macao		1							
Syrian Arab Republic								1	1
Senegal					1				1
Macedonia (former Yugoslav Republic of)								1	1
Hungary		1							1
Slovakia							1		1
Sweden		1							1
Slovenia					1				1
Indonesia								1	1
Algeria		1							1
Peru							1		1

	L	L1	MI	M	M2	E	D	D3	Total U.Porto
Andorra					1				1
Kenya			1						1
Japan					1				1
(other/not available)		1							1
Total	1201	8814	12205	971	3962	468	1386	889	29896

Source: FAC – RAIDES/DIMAS

Table 8: Number of new students enrolled in 2008, per degree category and faculty/school

	L	L1	MI	M	M2	E	D	D3	Total	%
FAUP			173					35	208	2%
FBAUP		164			84				248	3%
FCUP	34	694	125		485	10	27	80	1455	16%
FCNAUP		108			16		1		125	1%
FADEUP	9	222			244				475	5%
FDUP		212			140	26			378	4%
FEP		395			461			52	908	10%
FEUP		16	1301	1	239	26		106	1689	18%
FFUP			349		33		7		389	4%
FLUP		768			540	152	12	85	1557	17%
FMUP			290		81	144	20	67	602	7%
FMDUP			134		36				170	2%
FPCEUP		76	185		132			53	446	5%
ICBAS		39	329	12	114	67	2	24	587	6%
Total U.Porto	43	2694	2886	13	2605	425	69	502	9237	100%
	0.5%	29%	31%	0.1%	28%	5%	1%	5%	100%	

Source: FAC – RAIDES/DIMAS

Table 9: Number of students enrolled in 2008 in the 1st year for the 1st time, per degree category and faculty/school

	L	L1	MI	M	M2	E	D	D3	Total	%
FAUP			139					35	174	2%
FBAUP		160			44				204	3%
FCUP	34	656	108		330	10	27	80	1245	16%
FCNAUP		83			16		1		100	1%
FADEUP		177			244				421	5%
FDUP		207			140	26			373	5%
FEP		357			461			52	870	11%
FEUP		11	976		166	26		106	1285	16%
FFUP			195		26		7		228	3%
FLUP		741			451	152	12	85	1441	18%
FMUP			284		81	144	20	67	596	7%
FMDUP			92		36				128	2%
FPCEUP		76	140		132			53	401	5%
ICBAS		39	260	12	114	67	2	24	518	6%
Total U.Porto	34	2507	2194	12	2241	425	69	502	7984	100%
	0.4%	31%	27%	0.2%	28%	5%	1%	6%	100%	

Source: FAC – RAIDES/DIMAS

Students enrolled in undergraduate, 1st cycle and integrated masters programmes in 2008/2009

Table 10: Number of students enrolled in undergraduate, 1st cycle and integrated masters programmes, per gender and faculty/school (2008)

	Undergraduate		1 st cycle		Integrated Masters		Total	
	M	MF	M	MF	M	MF	M	MF
FAUP	44	74			390	861	434	935
FBAUP			228	612			228	612
FCUP	76	218	1011	2087	316	358	1403	2663
FCNAUP			51	395			51	395
FADEUP	205	291	440	616			645	907
FDUP	5	7	289	810			294	817
FEP	251	524	891	1577			1142	2101
FEUP	2	5	52	77	4563	5743	4617	5825
FFUP					283	1133	283	1133
FLUP	10	40	907	2355			917	2395
FMUP					575	1554	575	1554
FMDUP	10	39			109	397	119	436
FPCEUP			31	205	111	705	142	910
ICBAS	1	3	36	80	509	1454	546	1537
Total U.Porto	604	1201	3936	8814	6856	12205	11396	22220

Source: FAC – RAIDES/DIMAS

Chart 4: Number of students enrolled in undergraduate, 1st cycle and integrated masters programmes, per age (2008)

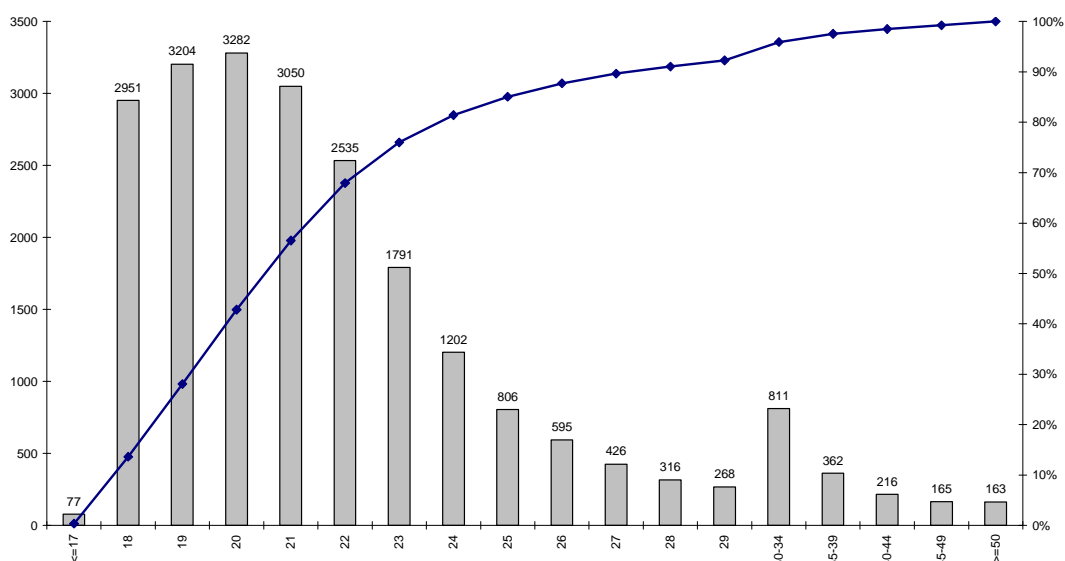


Table 11: Number of new students enrolled in undergraduate, 1st cycle and integrated masters programmes, per admission scheme in 2008

	L	L1	MI	Total
Annual Competition for University Admission (2008)	23	2143	1948	4114
Holders of medium and university degrees	2	60	381	443
Change of programme	4	182	134	320
Transfer	4	90	208	302
Re-admission	9	53	144	206
Exams specially designed to assess the capacity of those over 23 years old to attend higher education	1	134	34	169
Athletes with a high-performance status		18	23	41
Scholarship nationals from Portuguese speaking African countries		13	9	22
Holders of a technological specialisation diploma		1	4	5
Nationals or sons of nationals from East Timor			1	1
Total U.Porto	43	2694	2886	5623

Source: FAC – RAIDES/DIMAS

Table 12: Number of students enrolled in undergraduate, 1st cycle and integrated masters programmes, per nationality and faculty/school (2008)

	FAUP	FBAUP	FCUP	FCNAUP	FADEUP	FDUP	FEP	FEUP	FFUP	FLUP	FMUP	FMDUP	FPCEUP	ICBAS	Total U.Porto
Portugal	907	601	2597	386	893	801	2053	5660	1122	2320	1540	423	891	1520	21714
Brazil	5		16	5	12	2	8	36	6	26	3	3	5	5	132
Cape Verde	9		13	2		6	22	44	3	9	3		9	4	124
Angola	1		3			1	1	13		7	2	3	1	2	34
France		1	9			1	1	17		3			1		33
Sao Tome and Principe	1		2			3	1	5			3	1	1	3	20
Ukraine	1	4	2				3	3		4					17
Mozambique	1		1			1	2	3		2	1	1	2		14
Venezuela								8		4					12
Spain	2	1	3	1				1				2		1	11
South Africa			4					4		2					10
Guinea Bissau				1		2	2	1		1		1		1	9
Russian Federation			1		1		4	2	1						9
United States	2	1	1					4							8
Switzerland		1	1					4		2					8
Germany		1	1				1	1		3					7
China								5		1				1	7
Italy	2						1	2		1					6
East Timor	1						1			1	1	1			5
Belarus								1		2	1				4
Bulgaria	2		2												4
United Kingdom			1					1		2					4
Poland			1							1		1			3
Canada			1					1							2

	FAUP	FBAUP	FCUP	FCNAUP	FADEUP	FDUP	FEP	FEUP	FFUP	FLUP	FMUP	FMDUP	FPCEUP	ICBAS	Total U.Porto
Finland			1							1					2
Luxembourg								2							2
Netherlands		1						1							2
Swaziland		1								1					2
Algeria							1								1
Argentina										1					1
Australia			1												1
Bangladesh								1							1
Korea (Republic of)	1														1
Guinea								1							1
Hungary										1					1
India								1							1
Israel									1						1
Macao			1												1
Panama								1							1
Kenya								1							1
Sweden			1												1
Turkey								1							1
(other/not available)					1										1
Total	935	612	2663	395	907	817	2101	5825	1133	2395	1554	436	910	1537	22220

Source: FAC – RAIDES/DIMAS

Table 13: Number of students enrolled in undergraduate, 1st cycle and integrated masters programmes, per country of conclusion of their last qualification (2008)

	L	L1	MI	Total U.Porto
Portugal	1190	8685	12011	21886
Brazil		44	49	93
Cape Verde	6	46	41	93
Angola	1	4	13	18
Spain	1	3	9	13
Mozambique	1	3	8	12
France		2	8	10
East Timor	1	3	4	8
Venezuela	1		7	8
Macao			7	7
Sao Tome and Principe		2	4	6
Belgium		2	3	5
Ukraine		3	2	5
Poland		1	3	4
Switzerland		2	2	4
Germany		2	1	3
Canada			3	3
China			3	3
Luxembourg			3	3
Afghanistan			2	2
South Africa		1	1	2
Bangladesh			2	2
United States			2	2
Guinea Bissau		2		2
Italy			2	2
United Kingdom		1	1	2
Algeria		1		1
Argentina		1		1
Aruba			1	1
Bahrain			1	1
Belize			1	1
Benin			1	1
Bolivia		1		1
Botswana		1		1
Bulgaria			1	1
Qatar			1	1
Colombia			1	1
Korea (Republic of)			1	1
Cuba			1	1
Iran (Islamic Republic of)			1	1

	L	L1	MI	Total U.Porto
Lebanon		1		1
Nicaragua			1	1
Panama			1	1
Puerto Rico		1		1
Kenya			1	1
Russian Federation		1		1
Turkey			1	1
(other/not available)		1		1
Total	1201	8814	12205	22220

Source: FAC – RAIDES/DIMAS

Table 14: Number of students enrolled in undergraduate, 1st cycle and integrated masters programmes, per gender and programme (2008)

	L		L1		MI		Total		
	M	MF	M	MF	M	MF	M	%	MF
Faculty of Architecture	44	74			390	861	434	46%	935
Architecture	44	74			390	861	434	46%	935
Faculty of Fine Arts			228	612			228	37%	612
Plastic Arts			145	365			145	40%	365
Communication Design			83	247			83	34%	247
Faculty of Sciences	76	218	1011	2087	316	358	1403	53%	2663
Landscape Architecture	59	144					59	41%	144
Astronomy			47	68			47	69%	68
Biology	1	3	173	486			174	36%	489
Biology and Geology (Teaching)		1					0	0%	1
Biochemistry			85	242			85	35%	242
Computer Science		3	202	223			202	89%	226
Engineering Sciences			95	166			95	57%	166
Environmental Sciences and Technology			66	141			66	47%	141
Agronomic Engineering	1	2					1	50%	2
Network Engineering and IT Systems					268	298	268	90%	298
Physical Engineering					48	60	48	80%	60
Physics	3	6	96	112			99	84%	118
Physics and Chemistry (Teaching)	4	14					4	29%	14
Geology		3	44	99			44	43%	102
Mathematics	4	23	90	210			94	40%	233
Mathematics applied to Technology	2	5					2	40%	5
Chemistry	2	14	113	340			115	32%	354

	L		L1		MI		Total		
	M	MF	M	MF	M	MF	M	%	MF
Faculty of Nutrition and Food Science			51	395			51	13%	395
Nutrition Sciences			51	395			51	13%	395
Faculty of Sport	205	291	440	616			645	71%	907
Sports Sciences			440	616			440	71%	616
Sports and Physical Education	205	291					205	70%	291
Faculty of Law	5	7	289	810			294	36%	817
Criminology			55	127			55	43%	127
Law	5	7	234	683			239	35%	690
Faculty of Economics	251	524	891	1577			1142	54%	2101
Economics	177	364	579	1031			756	54%	1395
Management	74	160	312	546			386	55%	706
Faculty of Engineering	2	5	52	77	4563	5743	4617	79%	5825
Bioengineering					50	126	50	40%	126
Engineering Sciences - Mining and Geo-Environmental Engineering			52	77			52	68%	77
Civil Engineering					1077	1433	1077	75%	1433
Mining and Geo-Environmental Engineering	2	5					2	40%	5
Environmental Engineering					87	222	87	39%	222
Electrical and Computers Engineering					1378	1487	1378	93%	1487
Industrial Engineering and Management					233	318	233	73%	318
Informatics and Computing Engineering					608	670	608	91%	670
Mechanical Engineering					843	938	843	90%	938
Metallurgical and Materials Engineering					105	141	105	74%	141
Chemical Engineering					182	408	182	45%	408
Faculty of Pharmacy					283	1133	283	25%	1133
Pharmaceutical Sciences					283	1133	283	25%	1133
Faculty of Arts	10	40	907	2355			917	38%	2395
Archaeology			78	138			78	57%	138
Information Science			58	152			58	38%	152
Communication Sciences: Journalism, Public Relations, Multimedia			68	284			68	24%	284
Language Sciences			6	41			6	15%	41
Portuguese and Lusophone Studies			20	68			20	29%	68
Philosophy			100	222			100	45%	222
Geography			165	284			165	58%	284
History			154	291			154	53%	291
History of Art			44	132			44	33%	132
Applied Languages			23	80			23	29%	80
Languages and International Relations			39	128			39	30%	128

	L		L1		MI		Total		
	M	MF	M	MF	M	MF	M	%	MF
Languages, Literatures and Cultures			93	350			93	27%	350
Sociology	10	40	59	185			69	31%	225
Faculty of Medicine					575	1554	575	37%	1554
Medicine					575	1554	575	37%	1554
Faculty of Dental Medicine	10	39			109	397	119	27%	436
Dental Medicine	10	39			109	397	119	27%	436
Faculty of Psychology and Education Science			31	205	111	705	142	16%	910
Education Sciences			31	205			31	15%	205
Psychology					111	705	111	16%	705
Institute of Biomedical Sciences Abel Salazar	1	3	36	80	509	1454	546	36%	1537
Aquatic Sciences		1	36	80			36	44%	81
Medicine	1	2			372	1017	373	37%	1019
Veterinary Medicine					137	437	137	31%	437
Total U.Porto	604	1201	3936	8814	6856	12205	11396	51%	22220

Source: FAC – RAIDES/DIMAS

Chart 5: Proportion of students enrolled in undergraduate, 1st cycle and integrated masters programmes, in the year n of the programme with n , $n+1$, $n+2$ e $n+3$ or more enrolments (2008)

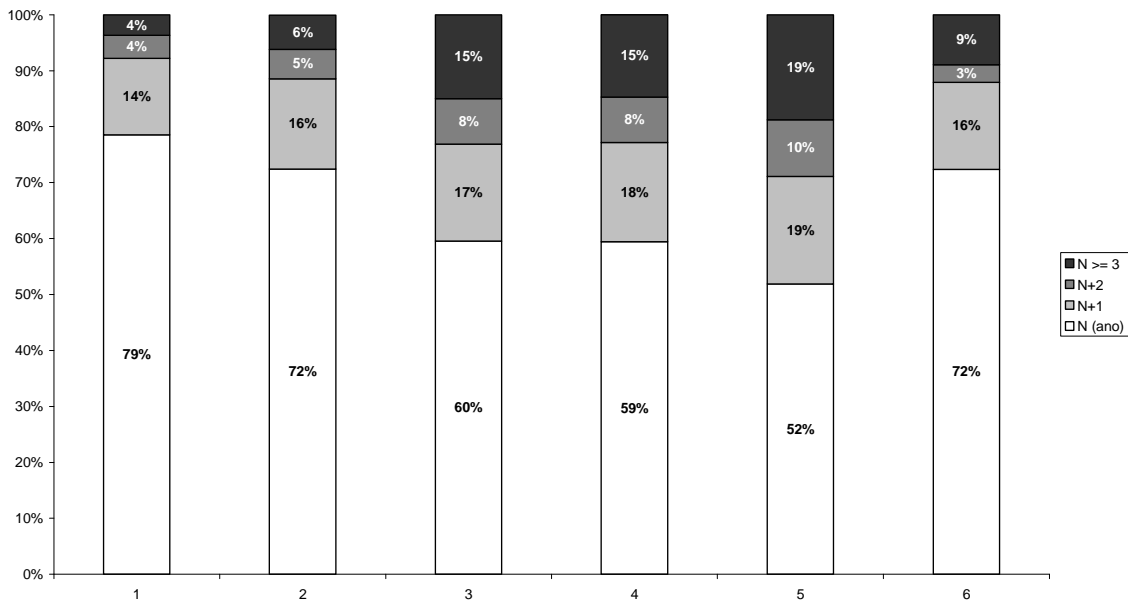


Table 15: Number of students enrolled, number of students enrolled in the 1st year for the 1st time and proportion of those enrolled in the year N with N enrolments in undergraduate, 1st cycle and integrated masters programmes, per programme (2008)

	L		L1		MI		Total		N in N *
	MF	PV_MF	MF	PV_MF	MF	PV_MF	MF	PV_MF	%
Faculty of Architecture	74				861	139	935	139	56%
Architecture	74				861	139	935	139	56%
Faculty of Fine Arts			612	160			612	160	71%
Plastic Arts			365	103			365	103	64%
Communication Design			247	57			247	57	82%
Faculty of Sciences	218	34	2087	656	358	108	2663	798	62%
Landscape Architecture	144	34					144	34	78%
Astronomy			68	20			68	20	47%
Biology	3		486	159			489	159	65%
Biology and Geology (Teaching)	1						1		0%
Biochemistry			242	77			242	77	72%
Computer Science	3		223	44			226	44	42%
Engineering Sciences			166	77			166	77	83%
Environmental Sciences and Technology			141	54			141	54	68%
Agronomic Engineering	2						2		0%
Network Engineering and IT Systems					298	83	298	83	58%
Physical Engineering					60	25	60	25	85%
Physics	6		112	30			118	30	52%
Physics and Chemistry (Teaching)	14						14		14%
Geology	3		99	38			102	38	66%
Mathematics	23		210	63			233	63	62%
Mathematics applied to Technology	5						5		40%
Chemistry	14		340	94			354	94	50%
Faculty of Nutrition and Food Science			395	83			395	83	75%
Nutrition Sciences			395	83			395	83	75%
Faculty of Sport	291		616	177			907	177	64%
Sports Sciences			616	177			616	177	71%
Sports and Physical Education	291						291		48%
Faculty of Law	7		810	207			817	207	73%
Criminology			127	60			127	60	88%
Law	7		683	147			690	147	70%

	L		L1		MI		Total		N in N *
	MF	PV_MF	MF	PV_MF	MF	PV_MF	MF	PV_MF	%
Faculty of Economics	524		1577	357			2101	357	56%
Economics	364		1031	232			1395	232	55%
Management	160		546	125			706	125	57%
Faculty of Engineering	5		77	11	5743	976	5825	987	61%
Bioengineering					126	63	126	63	94%
Engineering Sciences - Mining and Geo- Environmental Engineering			77	11			77	11	26%
Civil Engineering					1433	201	1433	201	61%
Mining and Geo-Environmental Engineering	5						5		0%
Environmental Engineering					222	48	222	48	87%
Electrical and Computers Engineering					1487	233	1487	233	53%
Industrial Engineering and Management					318	61	318	61	82%
Informatics and Computing Engineering					670	118	670	118	72%
Mechanical Engineering					938	145	938	145	51%
Metallurgical and Materials Engineering					141	26	141	26	59%
Chemical Engineering					408	81	408	81	62%
Faculty of Pharmacy					1133	195	1133	195	83%
Pharmaceutical Sciences					1133	195	1133	195	83%
Faculty of Arts	40		2355	741			2395	741	53%
Archaeology			138	41			138	41	50%
Information Science			152	46			152	46	49%
Communication Sciences: Journalism, Public Relations, Multimedia			284	96			284	96	67%
Language Sciences			41	23			41	23	76%
Portuguese and Lusophone Studies			68	21			68	21	66%
Philosophy			222	69			222	69	54%
Geography			284	90			284	90	51%
History			291	92			291	92	34%
History of Art			132	38			132	38	63%
Applied Languages			80	32			80	32	79%
Languages and International Relations			128	40			128	40	51%
Languages, Literatures and Cultures			350	96			350	96	46%
Sociology	40		185	57			225	57	55%
Faculty of Medicine					1554	284	1554	284	85%
Medicine					1554	284	1554	284	85%

	L		L1		MI		Total		N in N *
	MF	PV_MF	MF	PV_MF	MF	PV_MF	MF	PV_MF	%
Faculty of Dental Medicine	39				397	92	436	92	84%
Dental Medicine	39				397	92	436	92	84%
Faculty of Psychology and Education Science			205	76	705	140	910	216	75%
Education Sciences			205	76			205	76	81%
Psychology					705	140	705	140	73%
Institute of Biomedical Sciences Abel Salazar	3		80	39	1454	260	1537	299	79%
Aquatic Sciences	1		80	39			81	39	86%
Medicine	2				1017	184	1019	184	84%
Veterinary Medicine					437	76	437	76	65%
Total U.Porto	1201	34	8814	2507	12205	2194	22220	4735	66%

Note *: Proportion of students enrolled in year n with n enrolments (n represents the year of the programme and the number of enrolments)
Source: FAC – RAIDES/DIMAS

Students enrolled in masters and 2nd cycle programmes in 2008/2009

Table 16: Number of students enrolled in masters and 2nd cycle programmes, per gender and faculty/school (2008)

	Masters degree		Masters degree 2 nd cycle		Total	
	M	MF	M	MF	M	MF
FAUP	9	18			9	18
FBAUP	2	2	54	151	56	153
FCUP		2	261	682	261	684
FCNAUP	1	16	2	26	3	42
FADEUP	107	215	136	244	243	459
FDUP			50	140	50	140
FEP	57	125	266	516	323	641
FEUP	89	140	215	431	304	571
FFUP	3	14	17	74	20	88
FLUP	24	78	208	763	232	841
FMUP	2	3	131	431	133	434
FMDUP	5	11	18	36	23	47
FPCEUP	19	122	42	349	61	471
ICBAS	56	225	26	119	82	344
Total U.Porto	374	971	1426	3962	1800	4933

Source: FAC – RAIDES/DIMAS

Chart 6: Number of students enrolled in masters and 2nd cycle programmes, per age (2008)

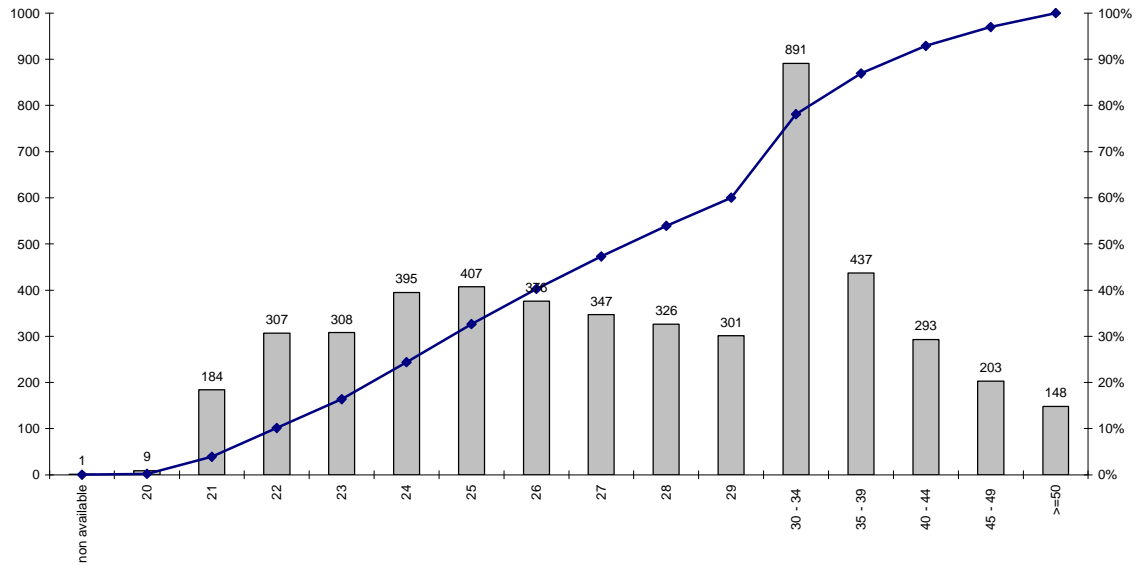


Table 17: Number of students enrolled in masters and 2nd cycle programmes, per nationality and faculty/school (2008)

	FAUP	FBAUP	FCUP	FCNAUP	FADEUP	FDUP	FEP	FEUP	FFUP	FLUP	FMUP	FMDUP	FPCEUP	ICBAS	Total U.Porto
Portugal	12	136	664	37	363	130	580	532	78	762	405	46	458	336	4539
Brazil	6	16	9	4	90	8	26	23	7	31	15		9	6	250
Cape Verde			5		1		6	2		25					39
Mozambique			1			1	3		1	2	5				13
Angola			1			1	1			4	4				11
France					1		2	3		2			2		10
Sao Tome and Principe							3	1			1		2		7
Italy		1		1					1	1	1			1	6
Romania							5	1							6
Venezuela							2	1		2				1	6
Guinea Bissau							1			2	1	1			5
Germany					1		2			1					4
China			1				2	1							4
Spain								1		1	2				4
Mexico								4							4
Poland							3								3
East Timor			1						1	1					3
Argentina					1					1					2
Colombia					2										2
Moldova (Republic of)							1	1							2
United Kingdom			1							1					2
Serbia and Montenegro										2					2

	FAUP	FBAUP	FCUP	FCNAUP	FADEUP	FDUP	FEP	FEUP	FFUP	FLUP	FMUP	FMDUP	FPCEUP	ICBAS	Total U.Porto
Andorra										1					1
Slovenia							1								1
United States							1								1
Japan										1					1
Luxembourg							1								1
Panama								1							1
Senegal										1					1
Switzerland							1								1
Turkey			1												1
Total	18	153	684	42	459	140	641	571	88	841	434	47	471	344	4933

Source: FAC – RAIDES/DIMAS

Table 18: Number of students enrolled in masters and 2nd cycle programmes, per country of conclusion of their last qualification (2008)

	M	M2	Total U.Porto
Portugal	878	3759	4637
Brazil	65	151	216
Cape Verde	23	3	26
Angola		8	8
Mozambique		7	7
Spain		3	3
Italy	1	2	3
Mexico		3	3
Romania		3	3
Venezuela		3	3
Argentina	1	1	2
Serbia and Montenegro		2	2
United Kingdom		2	2
Poland	1	1	2
East Timor		2	2
Botswana		1	1
Canada		1	1
China		1	1
Cuba		1	1
France		1	1
Ireland		1	1
Japan		1	1
Moldova (Republic of)		1	1
Russian Federation		1	1
Senegal		1	1
Syrian Arab Republic		1	1
Turkey		1	1
(other/not available)	2		2
Total	971	3962	4933

Source: FAC – RAIDES/DIMAS

Table 19: Number of students enrolled in masters and 2nd cycle programmes, per gender and programme (2008)

		M		M2		Total		
		M	MF	M	MF	M	%	MF
Faculty of Architecture		9	18			9	50%	18
	Intervention Methodologies in Architectural Heritage	9	18			9	50%	18
Faculty of Fine Arts		2	2	54	151	56	37%	153
	Art and Design for Public Venues			3	15	3	20%	15
	Multimedia Art	2	2			2	100%	2
	Drawing and Printing Techniques			1	7	1	14%	7
	Image design			9	34	9	26%	34
	Graphic Design and Editorial Projects			10	20	10	50%	20
	Sculpture			10	17	10	59%	17
	Artistic Studies			10	33	10	30%	33
	Painting			6	13	6	46%	13
	Drawing Practice and Theory			5	11	5	45%	11
	Contemporary Artistic Practices				1	0	0%	1
Faculty of Sciences			2	261	682	261	38%	684
	Astronomy			2	7	2	29%	7
	Biodiversity, Genetics and Evolution			13	24	13	54%	24
	Biology			14	56	14	25%	56
	Biology and Geology in School Context			1	17	1	6%	17
	Biology and Water Quality Management			8	21	8	38%	21
	Biochemistry			21	46	21	46%	46
	Computer Science			33	41	33	80%	41
	Nutrition and Consumption Sciences			5	20	5	25%	20
	Environmental Sciences and Technology			15	44	15	34%	44
	Curricular Development in Astronomy			6	11	6	55%	11
	Ecology, Environment and Land			10	23	10	43%	23
	Multimedia Education		1			0	0%	1
	Agronomic Engineering			18	39	18	46%	39
	Geographical Engineering			18	27	18	67%	27
	Mathematical Engineering			8	15	8	53%	15
	Teaching Biology and Geology at 3rd Cycle of Primary Education and Secondary Education			3	20	3	15%	20
	Teaching Physics and Chemistry at 3rd Cycle of Primary Education and Secondary Education			2	13	2	15%	13

	M		M2		Total		
	M	MF	M	MF	M	%	MF
Teaching Mathematics at 3rd Cycle of Primary Education and Secondary Education			3	15	3	20%	15
Physics			11	11	11	100%	11
Physics and Chemistry in School Context			4	28	4	14%	28
Medical Physics			8	17	8	47%	17
Forensic Genetics			4	16	4	25%	16
Geomaterials and Geological Resources			8	13	8	62%	13
Hydrobiology		1			0	0%	1
Mathematics			4	7	4	57%	7
Mathematics for Teachers			7	27	7	26%	27
Modelling, Analysis and Optimisation of Industrial Processes			5	17	5	29%	17
Chemistry			17	56	17	30%	56
Aquatic Biological Resources			4	9	4	44%	9
Geographical Information Systems			4	9	4	44%	9
Food Technology, Science and Safety			3	30	3	10%	30
Wine production and oenology			2	3	2	67%	3
Faculty of Nutrition and Food Science	1	16	2	26	3	7%	42
Collective Food Studies				8	0	0%	8
Clinical Nutrition	1	16	2	18	3	9%	34
Faculty of Sport	107	215	136	244	243	53%	459
Adapted Physical Activity	11	34	17	32	28	42%	66
Physical and Health Activities	14	35	16	40	30	40%	75
Physical Activity for the Elderly	5	18	10	27	15	33%	45
Sports Science		1			0	0%	1
Motor Skill Development	7	21	5	13	12	35%	34
Sports for Children and Youths	17	34	14	33	31	46%	67
Sports Management	22	35	29	43	51	65%	78
High-Yield Sports Training	31	37	45	56	76	82%	93
Faculty of Law			50	140	50	36%	140
Law			50	140	50	36%	140
Faculty of Economics	57	125	266	516	323	50%	641
Data Analysis and Decision Support Systems	8	22	18	31	26	49%	53
Business Sciences	1	3			1	33%	3
Accountancy	13	30	18	38	31	46%	68
Development and Social Inclusion	2	10			2	20%	10

	M		M2		Total		
	M	MF	M	MF	M	%	MF
Economics	8	14	8	19	16	48%	33
Economics and Company Administration			17	29	17	59%	29
Economics and Innovation Management			14	25	14	56%	25
Economics and City Management			10	28	10	36%	28
Economics and Human Resource Management			8	29	8	28%	29
Economics and Environment Management			7	14	7	50%	14
Economics and International Management			41	64	41	64%	64
Finances	14	23	36	51	50	68%	74
Finances and Fiscal Affairs			13	26	13	50%	26
Commercial Management			40	75	40	53%	75
Health Services, Management and Economics			8	21	8	38%	21
Marketing	11	23	22	54	33	43%	77
Quantitative Methods for Economics and Management			2	7	2	29%	7
Modelling and Economic Simulation			4	5	4	80%	5
Faculty of Engineering	89	140	215	431	304	53%	571
Automation, Instrumentation and Control	6	7			6	86%	7
Information Science			11	38	11	29%	38
Building Construction	8	9			8	89%	9
Industrial Design			22	40	22	55%	40
Biomedical Engineering			12	44	12	27%	44
Mining and Geo-Environmental Engineering			17	30	17	57%	30
Occupational Safety and Hygiene Engineering			45	96	45	47%	96
Services Engineering and Management			28	46	28	61%	46
Environmental Engineering	3	10			3	30%	10
Electrical and Computer Engineering	14	15			14	93%	15
Informatics Engineering	16	18			16	89%	18
Mechanical Engineering	9	13			9	69%	13
Applied Statistics and Modelling		4			0	0%	4
Civil Engineering Structures	5	10			5	50%	10
Fundamentals and Applications of Fluid Mechanics	1	1			1	100%	1
Information Management	7	10			7	70%	10
Innovation and Technological Entrepreneurship			28	41	28	68%	41
Artificial Intelligence and Intelligent Systems	2	2			2	100%	2
Industrial Maintenance	2	2			2	100%	2

	M		M2		Total		
	M	MF	M	MF	M	%	MF
Soil Mechanics and Geotechnical Engineering	2	2			2	100%	2
Multimedia			52	96	52	54%	96
Environment Planning and Urban Project	1	10			1	10%	10
Buildings Rehabilitation	2	6			2	33%	6
Communication Networks and Services	2	2			2	100%	2
Multimedia Technology	7	17			7	41%	17
Transports	1	1			1	100%	1
Transport Infrastructures	1	1			1	100%	1
Faculty of Pharmacy	3	14	17	74	20	23%	88
Clinical Analyses			5	21	5	24%	21
Quality Control	2	7	5	32	7	18%	39
Pharmaceutical Technology			4	12	4	33%	12
Clinical and Forensic Analytical Toxicology	1	7	3	9	4	25%	16
Faculty of Arts	24	78	208	763	232	28%	841
Archaeology			12	33	12	36%	33
Communication Sciences			19	53	19	36%	53
Teaching Philosophy at Secondary Education			7	15	7	47%	15
Teaching History and Geography at 3rd Cycle of Primary Education and Secondary Education			3	8	3	38%	8
Teaching English and German/French/Spanish at 3rd Cycle of Primary Education and Secondary Education)			7	29	7	24%	29
Teaching English and German/French/Spanish at Primary Education			1	7	1	14%	7
Teaching Portuguese and Classical Languages at 3rd Cycle of Primary Education and Secondary Education			1	4	1	25%	4
Teaching Portuguese and Foreign Languages at 3rd Cycle of Primary Education and Secondary Education				50	0	0%	50
African Studies	9	25			9	36%	25
German Studies				5	0	0%	5
Anglo-American Studies			6	55	6	11%	55
Literary, Cultural and Inter-Art Studies			8	60	8	13%	60
Local and Regional Studies		1			0	0%	1
Philosophy	2	5	20	36	22	54%	41
Contemporary History	4	7	9	13	13	65%	20
History of Portuguese Art			16	48	16	33%	48
History of Education	1	7			1	14%	7
History and Education			3	16	3	19%	16

	M		M2		Total		
	M	MF	M	MF	M	%	MF
History and Heritage			5	17	5	29%	17
Mediaeval and Renaissance History	1	1	10	23	11	46%	24
History, International Relations and Cooperation			8	22	8	36%	22
Linguistics	1	5	4	19	5	21%	24
Comparative Literature and Culture	1	6			1	17%	6
Romance Literatures		5			0	0%	5
Museology	1	4			1	25%	4
Urban and Regional Planning	2	2			2	100%	2
Portuguese second language / Foreign language			3	32	3	9%	32
Hazards, Spatial Planning and Geographical Information Systems			17	48	17	35%	48
Geographical Information Systems and Land Planning			30	69	30	43%	69
Sociology			11	57	11	19%	57
Sociology: Contemporary Portuguese Society, Structures and Dynamics	1	8			1	13%	8
Drama Text	1	2			1	50%	2
Translation and Linguistic Services			8	44	8	18%	44
Faculty of Medicine	2	3	131	431	133	31%	434
Bioethics			7	77	7	9%	77
Forensic Sciences			8	39	8	21%	39
Orthognatic and Orthodontic Surgery			11	19	11	58%	19
Epidemiology			11	34	11	32%	34
Evidence and Decisions in Healthcare			4	10	4	40%	10
Medical Information Technology			49	70	49	70%	70
Emergency Medicine	2	3			2	67%	3
Medicine and Molecular Oncology			13	42	13	31%	42
Psychiatry and Mental Health			10	49	10	20%	49
Public Health			18	91	18	20%	91
Faculty of Dental Medicine	5	11	18	36	23	49%	47
Oral Surgery	2	2	3	5	5	71%	7
Implantology	1	2			1	50%	2
Oral Implantology				4	0	0%	4
Conserving Dental Medicine	2	5			2	40%	5
Occlusion, ATM and Orofacial Pain			2	4	2	50%	4
Odontopaediatrics				4	0	0%	4

	M		M2		Total		
	M	MF	M	MF	M	%	MF
Orthodontics				4	0	0%	4
Periodontology			3	4	3	75%	4
Fixed Implants and Conventional Prosthesis			6	6	6	100%	6
Oral Rehabilitation		2	4	5	4	57%	7
Faculty of Psychology and Education Science	19	122	42	349	61	13%	471
Education Sciences	15	75	14	142	29	13%	217
Teaching Visual Arts at 3rd Cycle of Primary Education and Secondary Education			7	27	7	26%	27
Development Studies in Social and Educational Sciences		4	1	16	1	5%	20
Psychology	4	43			4	9%	43
Psychology Topics			20	164	20	12%	164
Institute of Biomedical Sciences Abel Salazar	56	225	26	119	82	24%	344
Basic and Applied Biology	6	12			6	50%	12
Nursing Sciences	20	91	2	25	22	19%	116
Sea Sciences - Marine Resources	4	17	5	9	9	35%	26
Social Service Sciences		1			0	0%	1
Environmental Contamination and Toxicology			6	19	6	32%	19
Catastrophe Medicine	3	7			3	43%	7
Forensic Medicine	10	41	5	24	15	23%	65
Traditional Chinese Medicine			4	12	4	33%	12
Oncology	11	46	4	30	15	20%	76
Cardiovascular Prevention and Rehabilitation	2	10			2	20%	10
Total U.Porto		971	1426	3962	1800	36%	4933

Source: FAC – RAIDES/DIMAS

Table 20: Number of students enrolled and number of students enrolled in the 1st year for the 1st time in masters and 2nd cycle programmes, per programme (2008)

	M		M2		Total	
	MF	PV_MF	MF	PV_MF	MF	PV_MF
Faculty of Architecture	18				18	
Intervention Methodologies in Architectural Heritage	18				18	
Faculty of Fine Arts	2		151		153	
Art and Design for Public Venues			15		15	
Multimedia Art	2				2	
Drawing and Printing Techniques			7		7	
Image design			34	44	34	44

	M		M2		Total	
	MF	PV_MF	MF	PV_MF	MF	PV_MF
Graphic Design and Editorial Projects			20	1	20	1
Sculpture			17	19	17	19
Artistic Studies			33	1	33	1
Painting			13	21	13	21
Drawing Practice and Theory			11	2	11	2
Contemporary Artistic Practices			1		1	
Faculty of Sciences	2		682	330	684	330
Astronomy			7	3	7	3
Biodiversity, Genetics and Evolution			24	17	24	17
Biology			56	9	56	9
Biology and Geology in School Context			17	16	17	16
Biology and Water Quality Management			21	7	21	7
Biochemistry			46	24	46	24
Computer Science			41	12	41	12
Nutrition and Consumption Sciences			20	11	20	11
Environmental Sciences and Technology			44	17	44	17
Curricular Development in Astronomy			11	2	11	2
Ecology, Environment and Land			23	8	23	8
Multimedia Education	1				1	
Agronomic Engineering			39	11	39	11
Geographical Engineering			27	5	27	5
Mathematical Engineering			15	10	15	10
Teaching Biology and Geology at 3rd Cycle of Primary Education and Secondary Education			20	20	20	20
Teaching Physics and Chemistry at 3rd Cycle of Primary Education and Secondary Education			13	13	13	13
Teaching Mathematics at 3rd Cycle of Primary Education and Secondary Education			15	15	15	15
Physics			11	8	11	8
Physics and Chemistry in School Context			28	28	28	28
Medical Physics			17	8	17	8
Forensic Genetics			16	8	16	8
Geomaterials and Geological Resources			13	3	13	3
Hydrobiology	1				1	
Mathematics			7	2	7	2
Mathematics for Teachers			27	17	27	17

	M		M2		Total	
	MF	PV_MF	MF	PV_MF	MF	PV_MF
Modelling, Analysis and Optimisation of Industrial Processes			17	7	17	7
Chemistry			56	20	56	20
Aquatic Biological Resources			9	7	9	7
Geographical Information Systems			9	3	9	3
Food Technology, Science and Safety			30	16	30	16
Wine production and oenology			3	3	3	3
Faculty of Nutrition and Food Science	16		26	16	42	16
Collective Food Studies			8		8	
Clinical Nutrition	16		18	16	34	16
Faculty of Sport	215		244	244	459	244
Adapted Physical Activity	34		32	32	66	32
Physical and Health Activities	35		40	40	75	40
Physical Activity for the Elderly	18		27	27	45	27
Sports Science	1				1	
Motor Skill Development	21		13	13	34	13
Sports for Children and Youths	34		33	33	67	33
Sports Management	35		43	43	78	43
High-Yield Sports Training	37		56	56	93	56
Faculty of Law			140	140	140	140
Law			140	140	140	140
Faculty of Economics	125		516	461	641	461
Data Analysis and Decision Support Systems	22		31	31	53	31
Business Sciences	3				3	
Accountancy	30		38	38	68	38
Development and Social Inclusion	10				10	
Economics	14		19	19	33	19
Economics and Company Administration			29	29	29	29
Economics and Innovation Management			25	25	25	25
Economics and City Management			28	22	28	22
Economics and Human Resource Management			29	29	29	29
Economics and Environment Management			14	14	14	14
Economics and International Management			64	42	64	42
Finances	23		51	51	74	51
Finances and Fiscal Affairs			26	26	26	26

	M		M2		Total	
	MF	PV_MF	MF	PV_MF	MF	PV_MF
Commercial Management			75	48	75	48
Health Services, Management and Economics			21	21	21	21
Marketing	23		54	54	77	54
Quantitative Methods for Economics and Management			7	7	7	7
Modelling and Economic Simulation			5	5	5	5
Faculty of Engineering	140		431	166	571	166
Automation, Instrumentation and Control	7				7	
Information Science			38	22	38	22
Building Construction	9				9	
Industrial Design			40	20	40	20
Biomedical Engineering			44	14	44	14
Mining and Geo-Environmental Engineering			30	5	30	5
Occupational Safety and Hygiene Engineering			96	15	96	15
Services Engineering and Management			46	27	46	27
Environmental Engineering	10				10	
Electrical and Computers Engineering	15				15	
Informatics Engineering	18				18	
Mechanical Engineering	13				13	
Applied Statistics and Modelling	4				4	
Civil Engineering Structures	10				10	
Fundamentals and Applications of Fluid Mechanics	1				1	
Information Management	10				10	
Innovation and Technological Entrepreneurship			41	24	41	24
Artificial Intelligence and Intelligent Systems	2				2	
Industrial Maintenance	2				2	
Soil Mechanics and Geotechnical Engineering	2				2	
Multimedia			96	39	96	39
Environment Planning and Urban Project	10				10	
Buildings Rehabilitation	6				6	
Communication Networks and Services	2				2	
Multimedia Technology	17				17	
Transports	1				1	
Transport Infrastructures	1				1	
Faculty of Pharmacy	14		74	26	88	26

	M		M2		Total	
	MF	PV_MF	MF	PV_MF	MF	PV_MF
Clinical Analyses			21		21	
Quality Control	7		32	17	39	17
Pharmaceutical Technology			12		12	
Clinical and Forensic Analytical Toxicology	7		9	9	16	9
Faculty of Arts	78		763	451	841	451
Archaeology			33	20	33	20
Communication Sciences			53	52	53	52
Teaching Philosophy at Secondary Education			15	15	15	15
Teaching History and Geography at 3rd Cycle of Primary Education and Secondary Education			8	7	8	7
Teaching English and German/French/Spanish at 3rd Cycle of Primary Education and Secondary Education)			29	15	29	15
Teaching English and German/French/Spanish at Primary Education			7	6	7	6
Teaching Portuguese and Classical Languages at 3rd Cycle of Primary Education and Secondary Education			4	4	4	4
Teaching Portuguese and Foreign Languages at 3rd Cycle of Primary Education and Secondary Education			50	21	50	21
African Studies	25				25	
German Studies			5	4	5	4
Anglo-American Studies			55	38	55	38
Literary, Cultural and Inter-Art Studies			60	31	60	31
Local and Regional Studies	1				1	
Philosophy	5		36	22	41	22
Contemporary History	7		13	13	20	13
History of Portuguese Art			48	38	48	38
History of Education	7				7	
History and Education			16	13	16	13
History and Heritage			17		17	
Mediaeval and Renaissance History	1		23	17	24	17
History, International Relations and Cooperation			22		22	
Linguistics	5		19	9	24	9
Comparative Literature and Culture	6				6	
Romance Literatures	5				5	
Museology	4				4	
Urban and Regional Planning	2				2	
Portuguese second language / Foreign language			32	18	32	18

	M		M2		Total	
	MF	PV_MF	MF	PV_MF	MF	PV_MF
Hazards, Spatial Planning and Geographical Information Systems			48	25	48	25
Geographical Information Systems and Land Planning			69	29	69	29
Sociology			57	23	57	23
Sociology: Contemporary Portuguese Society, Structures and Dynamics	8				8	
Drama Text	2				2	
Translation and Linguistic Services			44	31	44	31
Faculty of Medicine	3		431	81	434	81
Bioethics			77		77	
Forensic Sciences			39		39	
Orthognatic and Orthodontic Surgery			19		19	
Epidemiology			34	9	34	9
Evidence and Decisions in Healthcare			10		10	
Medical Information Technology			70	30	70	30
Emergency Medicine	3				3	
Medicine and Molecular Oncology			42		42	
Psychiatry and Mental Health			49	27	49	27
Public Health			91	15	91	15
Faculty of Dental Medicine	11		36	36	47	36
Oral Surgery	2		5	5	7	5
Implantology	2				2	
Oral Implantology			4	4	4	4
Conserving Dental Medicine	5				5	
Occlusion, ATM and Orofacial Pain			4	4	4	4
Odontopaediatrics			4	4	4	4
Orthodontics			4	4	4	4
Periodontology			4	4	4	4
Fixed Implants and Conventional Prosthesis			6	6	6	6
Oral Rehabilitation	2		5	5	7	5
Faculty of Psychology and Education Science	122		349	132	471	132
Education Sciences	75		142	68	217	68
Teaching Visual Arts at 3rd Cycle of Primary Education and Secondary Education			27	27	27	27
Development Studies in Social and Educational Sciences	4		16		20	

	M		M2		Total	
	MF	PV_MF	MF	PV_MF	MF	PV_MF
Psychology	43				43	
Psychology Topics			164	37	164	37
Institute of Biomedical Sciences Abel Salazar	225	12	119	114	344	126
Basic and Applied Biology	12	12			12	12
Nursing Sciences	91		25	25	116	25
Sea Sciences - Marine Resources	17		9	9	26	9
Social Service Sciences	1				1	
Environmental Contamination and Toxicology			19	14	19	14
Catastrophe Medicine	7				7	
Forensic Medicine	41		24	24	65	24
Traditional Chinese Medicine			12	12	12	12
Oncology	46		30	30	76	30
Cardiovascular Prevention and Rehabilitation	10	12			10	12
Total U.Porto	971	12	3962	2241	4933	2253

Source: FAC – RAIDES/DIMAS

Students enrolled in specialisation programmes in 2008/2009

Table 21: Number of students enrolled in specialisation programmes, per gender and faculty/school (2008)

	M	MF
Faculty of Sciences		10
Faculty of Law	11	30
Faculty of Engineering	11	26
Faculty of Arts	26	153
Faculty of Medicine	76	178
Faculty of Dental Medicine	2	4
Institute of Biomedical Sciences Abel Salazar		67
Total U.Porto	144	468

Source: FAC – RAIDES/DIMAS

Chart 7: Number of students enrolled in specialisation programmes, per age (2008)

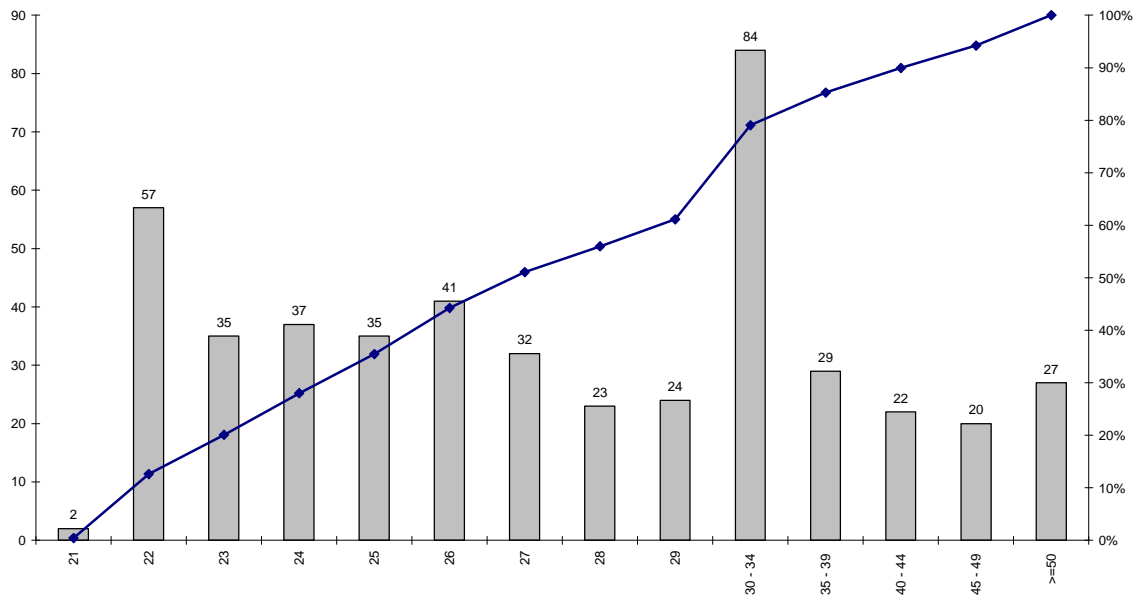


Table 22: Number of students enrolled in specialisation programmes, per nationality and faculty/school (2008)

	FCUP	FDUP	FEUP	FLUP	FMUP	FMDUP	ICBAS	Total U.Porto
Portugal	10	30	26	153	166	4	64	453
Spain					7			7
Brazil					2		2	4
Cape Verde					1			1
Greece					1			1
Guinea Bissau							1	1
Italy					1			1
Total	10	30	26	153	178	4	67	468

Source: FAC – RAIDES/DIMAS

Table 23: Number of students enrolled in specialisation programmes, per country of conclusion of their last qualification (2008)

	MF
Portugal	452
Spain	9
Brazil	2
United Kingdom	2
Bolivia	1
Italy	1
Ukraine	1
Total	468

Source: FAC – RAIDES/DIMAS

Table 24: Number of students enrolled in specialisation programmes, per gender and programme (2008)

		M		MF
Faculty of Sciences			0%	10
	Mathematics for Teachers		0%	10
Faculty of Law		11	37%	30
	Local Authorities Law	8	31%	26
	Tax Law	3	75%	4
Faculty of Engineering		11	42%	26
	Buildings Rehabilitation	8	35%	23
	Sustainable Energy Systems	3	100%	3
Faculty of Arts		26	17%	153
	Teaching	20	19%	108
	Medaieval and Renaissance History		0%	1
	Museology	5	19%	27
	Translation	1	6%	17
Faculty of Medicine		76	43%	178
	Hydrology and Climatology	17	65%	26
	Temporomandibular joint disorder and Orofacial Pain	5	83%	6
	Health Education	2	14%	14
	Pain Medicine	2	11%	19
	Sports Medicine	15	56%	27
	Occupational Medicine	17	61%	28
	Forensic Medicine	10	31%	32
	Orthodontics: Basis, Fundaments and Practice	5	25%	20
	Oral and Extra-oral Rehabilitation with Osseointegrated Implants	3	50%	6
Faculty of Dental Medicine		2	50%	4
	Orthodontics	2	50%	4
Institute of Biomedical Sciences Abel Salazar		18	27%	67
	Forensic Medical Sciences	10	20%	50
	Traditional Chinese Medicine	8	47%	17
Total U.Porto		144	31%	468

Source: FAC – RAIDES/DIMAS (M)

Table 25: Number of students enrolled and number of students enrolled in the 1st year for the 1st time in specialisation programmes, per programme (2008)

	MF	PV_MF
Faculty of Sciences	10	10
Mathematics for Teachers	10	10
Faculty of Law	30	26
Local Authorities Law	26	26
Tax Law	4	
Faculty of Engineering	26	26
Buildings Rehabilitation	23	23
Sustainable Energy Systems	3	3
Faculty of Arts	153	152
Teaching	108	108
Mediaeval and Renaissance History	1	
Museology	27	27
Translation	17	17
Faculty of Medicine	178	144
Hydrology and Climatology	26	26
Temporomandibular joint disorder and Orofacial Pain	6	
Health Education	14	14
Pain Medicine	19	19
Sports Medicine	27	27
Occupational Medicine	28	
Forensic Medicine	32	32
Orthodontics: Basis, Fundaments and Practice	20	20
Oral and Extra-oral Rehabilitation with Osseointegrated Implants	6	6
Faculty of Dental Medicine	4	
Orthodontics	4	
Institute of Biomedical Sciences Abel Salazar	67	67
Forensic Medical Sciences	50	50
Traditional Chinese Medicine	17	17
Total U.Porto	468	425

Source: FAC – RAIDES/DIMAS

Students enrolled in doctorate and 3rd cycle programmes in 2008/2009

Table 26: Number of students enrolled in doctorate and 3rd cycle programmes, per gender and faculty/school (2008)

	D		D3		Total	
	M	MF	M	MF	M	MF
Faculty of Architecture	9	12	21	35	30	47
Faculty of Fine Arts	22	35			22	35
Faculty of Sciences	104	205	52	86	156	291
Faculty of Nutrition and Food Science	5	12			5	12
Faculty of Sport	60	111	10	17	70	128
Faculty of Law	5	11			5	11
Faculty of Economics	31	65	28	52	59	117
Faculty of Engineering	115	188	207	312	322	500
Faculty of Pharmacy	20	85			20	85
Faculty of Arts	57	151	69	181	126	332
Faculty of Medicine	36	91	49	100	85	191
Faculty of Dental Medicine	5	19			5	19
Faculty of Psychology and Education Science	38	126	16	72	54	198
Institute of Biomedical Sciences Abel Salazar	90	275	9	34	99	309
Total U.Porto	597	1386	461	889	1058	2275

Source: FAC – RAIDES/DIMAS

Chart 8: Number of students enrolled in doctorate and 3rd cycle programmes, per age (2008)

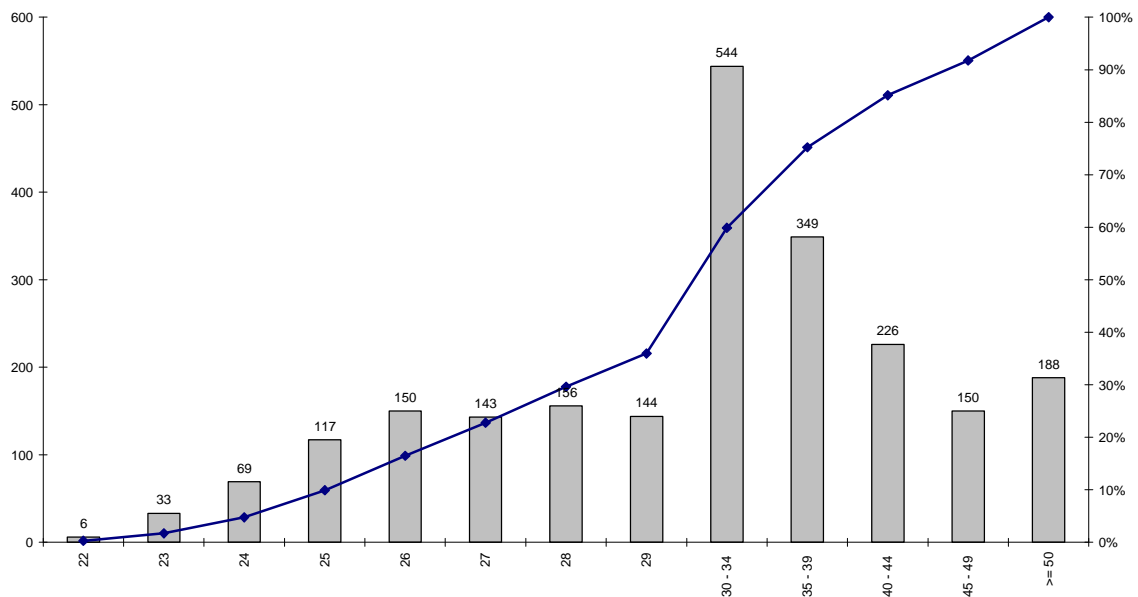


Table 27: Number of students enrolled in doctorate and 3rd cycle programmes, per nationality and faculty/school (2008)

	FAUP	FBAUP	FCUP	FCNAUP	FADEUP	FDUP	FEP	FEUP	FFUP	FLUP	FMUP	FMDUP	FPCEUP	ICBAS	Total U.Porto
Portugal	44	35	253	9	83	10	106	443	79	282	159	19	183	287	1992
Brazil	2		10	2	36		6	23	3	29	29		10	5	155
Spain	1		2	1	1		1	1		3	2			3	15
Cuba			3					1	2				1	1	8
Mozambique			1					2		4	1				8
Italy							1			4				2	7
Romania			1					4		1			1		7
Thailand					3									4	7
Angola			1							2			1	1	5
France			1					1		2			1		5
India			1			1		3							5
Iran (Islamic Republic of)			3					1		1					5
Germany			1					1		1				1	4
China			1					3							4
Russian Federation			1				2							1	4
Austria								1						2	3
Belgium			1						1	1					3
Colombia			1					2							3
United States			1				1							1	3
Greece								3							3
Israel					3										3
Pakistan			3												3
Turkey								2		1					3
Cape Verde										1			1		2

	FAUP	FBAUP	FCUP	FCNAUP	FADEUP	FDUP	FEP	FEUP	FFUP	FLUP	FMUP	FMDUP	FPCEUP	ICBAS	Total U.Porto
Croatia			1					1							2
Venezuela			1					1							2
Australia			1												1
Bangladesh			1												1
Belarus					1										1
Congo														1	1
Ecuador								1							1
Slovakia			1												1
Indonesia								1							1
Macedonia (former Yugoslav Republic of)								1							1
Mexico								1							1
Netherlands			1												1
Peru					1										1
Poland								1							1
Czech Republic								1							1
Syrian Arab Republic								1							1
Total	47	35	291	12	128	11	117	500	85	332	191	19	198	309	2275

Source: FAC – RAIDES/DIMAS

Table 28: Number of students enrolled in doctorate and 3rd cycle programmes, per country of conclusion of their last qualification (2008)

	D	D3	Total U.Porto
Portugal	1265	804	2069
Brazil	65	49	114
United Kingdom	13	4	17
Spain	7	8	15
Thailand	6	1	7
Cuba	3	2	5
Italy	4	1	5
United States	3	1	4
Angola	3		3
India	1	2	3
Israel		3	3
Russian Federation	2	1	3
Austria	2		2
Belgium	2		2
Cape Verde	2		2
China		2	2
Croatia		2	2
France	1	1	2
Pakistan		2	2
Bangladesh		1	1
Belarus	1		1
Greece	1		1
Iran (Islamic Republic of)		1	1
Macao		1	1
Malawi	1		1
Mozambique	1		1
Peru	1		1
Romania	1		1
Sao Tome and Principe	1		1
Sweden		1	1
Turkey		1	1
Venezuela		1	1
Total	1386	889	2275

Source: FAC – RAIDES/DIMAS

Table 29: Number of students enrolled in doctorate and 3rd cycle programmes, per gender and programme/field of knowledge (2008)

	D		D3		Total		
	M	MF	M	MF	M	%	MF
Faculty of Architecture	9	12	21	35	30	64%	47
Architecture	9	12	21	35	30	64%	47
Faculty of Fine Arts	22	35			22	63%	35
Art Sciences	2	5			2	40%	5
Drawing	3	6			3	50%	6
Communication Design	13	18			13	72%	18
Sculpture		1			0	0%	1
Painting	4	5			4	80%	5
Faculty of Sciences	104	205	52	86	156	54%	291
Landscape Architecture	1	2			1	50%	2
Astronomy	2	3	5	9	7	58%	12
Biology	21	60			21	35%	60
Computer Science			1	1	1	100%	1
Agricultural Sciences		5			0	0%	5
Computer Sciences	17	20			17	85%	20
Environmental Sciences and Technology	2	5			2	40%	5
Geographical Engineering	4	4			4	100%	4
Physics	23	31	5	8	28	72%	39
Geosciences			1	6	1	17%	6
Geology	7	12			7	58%	12
Computer Science	1	1	22	23	23	96%	24
Sciences Interdisciplinary	1	6			1	17%	6
Mathematics	5	14			5	36%	14
Applied Mathematics	3	7	10	24	13	42%	31
Chemistry	17	35	8	15	25	50%	50
Faculty of Nutrition and Food Science	5	12			5	42%	12
Nutrition Sciences	3	4			3	75%	4
Human Nutrition	2	8			2	25%	8
Faculty of Sport	60	111	10	17	70	55%	128
Physical and Health Activities	6	16	10	17	16	48%	33
Sports Science	54	95			54	57%	95
Faculty of Law	5	11			5	45%	11
Criminology	2	3			2	67%	3
Law	3	8			3	38%	8
Faculty of Economics	31	65	28	52	59	50%	117
Business Sciences	14	41	19	35	33	43%	76
Economics	17	24	9	17	26	63%	41
Faculty of Engineering	115	188	207	312	322	64%	500
Engineering Sciences	14	48			14	29%	48

	D		D3		Total		
	M	MF	M	MF	M	%	MF
Biomedical Engineering			11	31	11	35%	31
Civil Engineering	33	52	31	46	64	65%	98
Environmental Engineering	1	4			1	25%	4
Transport Engineering and Management			8	12	8	67%	12
Electrical and Computer Engineering	29	32	38	43	67	89%	75
Physical Engineering	1	1			1	100%	1
Industrial Engineering and Management	4	5	3	14	7	37%	19
Informatics Engineering			52	59	52	88%	59
Mechanical Engineering	10	10	21	30	31	78%	40
Metallurgical and Materials Engineering	2	3			2	67%	3
Chemical and Biological Engineering	21	33	22	49	43	52%	82
Leaders for Technical Industries			6	8	6	75%	8
Sustainable Energy Systems			15	20	15	75%	20
Faculty of Pharmacy	20	85			20	24%	85
Biochemistry	6	21			6	29%	21
Pharmacognosy		4			0	0%	4
Pharmacology	1	4			1	25%	4
Hydrology		2			0	0%	2
Microbiology	1	6			1	17%	6
Nutrition and Food Chemistry	2	8			2	25%	8
Analytical Chemistry	4	17			4	24%	17
Pharmaceutical Chemistry	3	10			3	30%	10
Organic Chemistry		3			0	0%	3
Pharmaceutical Technology	2	6			2	33%	6
Toxicology	1	4			1	25%	4
Faculty of Arts	57	151	69	181	126	38%	332
Archaeology			3	7	3	43%	7
Genetic and Textual Criticism				2	0	0%	2
German Studies			2	5	2	40%	5
Anglo-American Studies			4	13	4	31%	13
Philosophy		3	14	24	14	52%	27
Geography			9	21	9	43%	21
Physical Geography	2	3			2	67%	3
Human Geography	2	3			2	67%	3
History			20	43	20	47%	43
History of Portuguese Art			8	19	8	42%	19
Mediaeval and Renaissance History	4	6			4	67%	6
Arts	38	102			38	37%	102
Linguistics			1	8	1	13%	8
Literature	1	2			1	50%	2
Romance Cultures and Literatures			8	39	8	21%	39

		D		D3		Total		
		M	MF	M	MF	M	%	MF
	Museology	1	4			1	25%	4
	Sociology	9	28			9	32%	28
Faculty of Medicine		36	91	49	100	85	45%	191
	Bioethics			21	27	21	78%	27
	Human Biology	11	39			11	28%	39
	Clinical and Health Service Research			6	13	6	46%	13
	Medicine	25	50			25	50%	50
	Medicine and Molecular Oncology			8	18	8	44%	18
	Metabolism - Clinic and Experimentation			1	4	1	25%	4
	Neurosciences			2	13	2	15%	13
	Public Health		2	11	25	11	41%	27
Faculty of Dental Medicine		5	19			5	26%	19
	Dental Anatomy and Orofacial Genetics	1	3			1	33%	3
	Oral Surgery and Medicine	2	4			2	50%	4
	Pharmacology and Radiology		1			0	0%	1
	Conserving Dental Medicine	1	4			1	25%	4
	Pedodontics and Orthodontics		5			0	0%	5
	Dental Prosthetics and Occlusion	1	2			1	50%	2
Faculty of Psychology and Education Science		38	126	16	72	54	27%	198
	Education Sciences	17	40	10	39	27	34%	79
	Psychology	21	86	6	33	27	23%	119
Institute of Biomedical Sciences Abel Salazar		90	275	9	34	99	32%	309
	Biomedical Sciences	35	122			35	29%	122
	Nursing Sciences	6	24			6	25%	24
	Sea Sciences and the Environment			4	15	4	27%	15
	Aquatic Sciences	8	34			8	24%	34
	Social Service Sciences	1	4			1	25%	4
	Medical Sciences	23	37			23	62%	37
	Veterinary Sciences	11	32			11	34%	32
	Pathology and Molecular Genetics			5	19	5	26%	19
	Mental Health	6	22			6	27%	22
Total U.Porto		597	1386	461	889	1058	47%	2275

Source: FAC – RAIDES/DIMAS

Table 30: Number of students enrolled and number of students enrolled in the 1st year for the 1st time in doctorate and 3rd cycle programmes, per programme/field of knowledge (2008)

	D		D3		Total	
	MF	PV_MF	MF	PV_MF	MF	PV_MF
Faculty of Architecture	12		35	35	47	35
Architecture	12		35	35	47	35
Faculty of Fine Arts	35				35	0
Art Sciences	5				5	0
Drawing	6				6	0
Communication Design	18				18	0
Sculpture	1				1	0
Painting	5				5	0
Faculty of Sciences	205	27	86	80	291	107
Landscape Architecture	2	1			2	1
Astronomy	3	1	9	3	12	4
Biology	60	14			60	14
Computer Science			1	1	1	1
Agricultural Sciences	5	2			5	2
Computer Sciences	20				20	0
Environmental Sciences and Technology	5				5	0
Geographical Engineering	4				4	0
Physics	31	7	8	8	39	15
Geosciences			6	6	6	6
Geology	12				12	0
Computer Science	1		23	23	24	23
Sciences Interdisciplinary	6	1			6	1
Mathematics	14				14	0
Applied Mathematics	7	1	24	24	31	25
Chemistry	35		15	15	50	15
Faculty of Nutrition and Food Science	12	1			12	1
Nutrition Sciences	4				4	0
Human Nutrition	8	1			8	1
Faculty of Sport	111		17		128	0
Physical and Health Activities	16		17		33	0
Sports Science	95				95	0
Faculty of Law	11				11	0
Criminology	3				3	0
Law	8				8	0
Faculty of Economics	65		52	52	117	52
Business Sciences	41		35	35	76	35
Economics	24		17	17	41	17
Faculty of Engineering	188		312	106	500	106
Engineering Sciences	48				48	0

	D		D3		Total	
	MF	PV_MF	MF	PV_MF	MF	PV_MF
Biomedical Engineering			31	7	31	7
Civil Engineering	52		46	15	98	15
Environmental Engineering	4				4	0
Transport Engineering and Management			12	8	12	8
Electrical and Computer Engineering	32		43	9	75	9
Physical Engineering	1				1	0
Industrial Engineering and Management	5		14	5	19	5
Informatics Engineering			59	16	59	16
Mechanical Engineering	10		30	11	40	11
Metallurgical and Materials Engineering	3				3	0
Chemical and Biological Engineering	33		49	22	82	22
Leaders for Technical Industries			8	6	8	6
Sustainable Energy Systems			20	7	20	7
Faculty of Pharmacy	85	7			85	7
Biochemistry	21	2			21	2
Pharmacognosy	4	1			4	1
Pharmacology	4				4	0
Hydrology	2	1			2	1
Microbiology	6	1			6	1
Nutrition and Food Chemistry	8	1			8	1
Analytical Chemistry	17	1			17	1
Pharmaceutical Chemistry	10				10	0
Organic Chemistry	3				3	0
Pharmaceutical Technology	6				6	0
Toxicology	4				4	0
Faculty of Arts	151	12	181	85	332	97
Archaeology			7	1	7	1
Genetic and Textual Criticism			2	2	2	2
German Studies			5	4	5	4
Anglo-American Studies			13	6	13	6
Philosophy	3		24	20	27	20
Geography			21	8	21	8
Physical Geography	3				3	0
Human Geography	3				3	0
History			43	16	43	16
History of Portuguese Art			19	8	19	8
Mediaeval and Renaissance History	6	1			6	1
Arts	102				102	0
Linguistics			8	5	8	5
Literature	2				2	0
Romance Cultures and Literatures			39	15	39	15

		D		D3		Total	
		MF	PV_MF	MF	PV_MF	MF	PV_MF
	Museology	4				4	0
	Sociology	28	11			28	11
	Faculty of Medicine	91	20	100	67	191	87
	Bioethics			27	27	27	27
	Human Biology	39	4			39	4
	Clinical and Health Service Research			13		13	0
	Medicine	50	16			50	16
	Medicine and Molecular Oncology			18	18	18	18
	Metabolism - Clinic and Experimentation			4	4	4	4
	Neurosciences			13	8	13	8
	Public Health	2		25	10	27	10
	Faculty of Dental Medicine	19				19	0
	Dental Anatomy and Orofacial Genetics	3				3	0
	Oral Surgery and Medicine	4				4	0
	Pharmacology and Radiology	1				1	0
	Conserving Dental Medicine	4				4	0
	Pedodontics and Orthodontics	5				5	0
	Dental Prosthetics and Occlusion	2				2	0
	Faculty of Psychology and Education Science	126		72	53	198	53
	Education Sciences	40		39	20	79	20
	Psychology	86		33	33	119	33
	Institute of Biomedical Sciences Abel Salazar	275	2	34	24	309	26
	Biomedical Sciences	122				122	0
	Nursing Sciences	24				24	0
	Sea Sciences and the Environment			15	15	15	15
	Aquatic Sciences	34				34	0
	Social Service Sciences	4				4	0
	Medical Sciences	37	1			37	1
	Veterinary Sciences	32	1			32	1
	Pathology and Molecular Genetics			19	9	19	9
	Mental Health	22				22	0
	Total U.Porto	1386	69	889	502	2275	571

Source: FAC – RAIDES/DIMAS

Sources

FAC – RAIDES/DIMAS: Academic and Training Organization Services of the Rectory of the University of Porto – Reply from the U.Porto to the Survey on the Register of Enrolled and Graduate Students in Higher Education (RAIDES/DIMAS).

OCES – DIMAS (M): Science and Higher Education Observatory - Statistical Survey on the Graduate and Enrolled Students in Higher Education (DIMAS). Editions: “Students enrolled in Higher Education 2006/2007”, “Students enrolled in the academic year 2005-2006”, “Students enrolled (2004/05)” and “Students enrolled in the academic year 2003/2004”.

In <http://www.gpeari.mctes.pt/index.php?idc=47&idi=171910&valor=1>

Acronyms

M – Male students enrolled
MF – Total enrolled students

D – Doctorate pre-Bologna
D3 – 3rd cycle
E – Specialisation
L – Undergraduate degree pre-Bologna
L1 – 1st cycle
M – Masters degree pre-Bologna
M2 – 2nd cycle
MI – Integrated Masters
PV – Enrolled in the 1st year for the 1st time

EGP – University of Porto Business School
FADEUP – Faculty of Sport
FAUP – Faculty of Architecture
FBAUP – Faculty of Fine Arts
FCNAUP – Faculty of Nutrition and Food Science
FCUP – Faculty of Sciences
FDUP – Faculty of Law
FEP – Faculty of Economics
FEUP – Faculty of Engineering
FFUP – Faculty of Pharmacy
FLUP – Faculty of Arts
FMDUP – Faculty of Dental Medicine
FMUP – Faculty of Medicine
FPCEUP – Faculty of Psychology and Education Science
ICBAS – Institute of Biomedical Sciences Abel Salazar