

Admission to Higher Education 2008
A descriptive analysis

Rectory of the University of Porto
>> Continuous Improvement Service. 14-10-2008

TABLE OF CONTENTS

Chap. I – 1st round of the National Competition for University Admissions	6
I.1 – National overview: a comparison of the public universities	6
Table 1: List sorted by rate of places filled	6
Table 2: List sorted by weighted average classification of the last qualifying applicant placed	6
Table 3: Rate of places filled: comparative analysis 2007 – 2008	7
Table 4: Summary 1 st round – Places, applicants, successful applicants and surplus places	9
Table 5: Weight of public universities – Places and successful applicants	9
Chart 1: Rate of places filled of public universities	10
Chart 2: Weighted average classification of the last qualifying applicant to public universities...	10
Chart 3: Rate of places filled in public universities: comparative analysis 2007 – 2008.....	11
Chart 4: Weighted average classification of the last qualifying applicant to public universities: comparative analysis 2007 – 2008	11
I.2 – University of Porto.....	12
I.2.1 – Successful applicants	12
Table 6: U.Porto: comparative analysis 2007-2008 of places, successful applicants, rate of places filled and classification of the last qualifying applicant, per course	12
Chart 5: Rate of places filled per faculty: comparative analysis 2007-2008	14
Chart 6: Weighted average classification of the last qualifying applicant, per faculty: comparative analysis 2007-2008	15
Table 7: Successful applicants per placement round	15
Table 8: Successful applicants per school district where exams took place	16
Chart 7: Total and cumulative percentage of successful applicants per school district where exams took place	16
Table 9: Successful applicants per school where exams took place (top 50)	17
Table 10: Successful applicants per gender and course	18
Table 11: Successful applicants per gender and faculty	20
Chart 8: Successful applicants per gender and faculty, in percentage	21
Table 12: Successful applicants per admission preference and course	21
Table 13: Successful applicants per admission preference and faculty	23
Chart 9: Successful applicants per admission preference and faculty, in percentage.....	24
I.2.2 – Applicants.....	24
Table 14: Applicants per school district where exams took place.....	24
Chart 10: Total and cumulative percentage of applicants per school district where exams took place.....	25
Table 15: Applicants per school where exams took place (top 50).....	25
Table 16: Applicants per gender and course.....	26
Table 17: Applicants per gender and faculty	28
Chart 11: Applicants per gender and faculty, in percentage	29

Table 18: Applicants per application choice and course	29
Table 19: Applicants per application choice and faculty.....	31
Chart 12: Applicants per application choice and faculty, in percentage.....	32
Table 20: U.Porto: Rate of places filled and demand per course.....	32
Chart 13: Rate of places filled and demand, per faculty.....	34
Chart 14: Rate of places filled and course demand for the Faculty of Architecture	35
Chart 15: Rate of places filled and course demand for the Faculty of Fine Arts.....	35
Chart 16: Rate of places filled and course demand for the Faculty of Sciences	36
Chart 17: Rate of places filled and course demand for the Faculty of Nutrition and Food Science	37
Chart 18: Rate of places filled and course demand for the Faculty of Sport	37
Chart 19: Rate of places filled and course demand for the Faculty of Law	38
Chart 20: Rate of places filled and course demand for the Faculty of Economics	38
Chart 21: Rate of places filled and course demand for the Faculty of Engineering	39
Chart 22: Rate of places filled and course demand for the Faculty of Pharmacy.....	39
Chart 23: Rate of places filled and course demand for the Faculty of Arts	40
Chart 24: Rate of places filled and course demand for the Faculty of Medicine.....	41
Chart 25: Rate of places filled and course demand for the Faculty of Dental Medicine	41
Chart 26: Rate of places filled and course demand for the Faculty of Psychology and Education Science	42
Chart 27: Rate of places filled and course demand for the Institute of Biomedical Sciences Abel Salazar.....	42
I.2.3 – The U.Porto as 1st choice.....	43
Table 21: Applicants in 1 st choice per school district where exams took place.....	43
Chart 28: Applicants in 1 st choice per district in cumulative percentage	43
Table 22: Successful applicants in 1 st choice per school district where exams took place.....	44
Chart 29: Successful applicants in 1 st choice per district in cumulative percentage	44
Table 23: Applicants in 1 st choice per school where exams took place (top 50)	45
Table 24: Successful applicants in 1 st choice per school where exams took place (top 50).....	46
Table 25: Applicants and successful applicants in 1 st choice per gender and faculty.....	48
Chart 30: Applicants in 1 st choice per gender and faculty in percentage	48
Chart 31: Successful applicants in 1 st choice per gender and faculty in percentage	49
Table 26: Applicants in 1 st choice – successful and unsuccessful, per course.....	49
Table 27: Applicants in 1 st choice – successful and unsuccessful, per faculty: comparative analysis 2007-2008.....	51
Chart 32: Successful applicants in 1 st choice per faculty: comparative analysis 2007-2008	52
Chart 33: Applicants in 1 st choice but unsuccessful due to places available, per faculty: comparative analysis 2007-2008	52
Chart 34: Course in the Faculty of Architecture as 1 st choice.....	53
Chart 35: Courses in the Faculty of Fine Arts as 1 st choice	53
Chart 36: Courses in the Faculty of Sciences as 1 st choice.....	54
Chart 37: Course in the Faculty of Nutrition and Food Science as 1 st choice.....	55

Chart 38: Course in the Faculty of Sport as 1 st choice	55
Chart 39: Courses in the Faculty of Law as 1 st choice.....	56
Chart 40: Courses in the Faculty of Economics as 1 st choice.....	56
Chart 41: Courses in the Faculty of Engineering as 1 st choice.....	57
Chart 42: Course in the Faculty of Pharmacy as 1 st choice	57
Chart 43: Courses in the Faculty of Arts as 1 st choice.....	58
Chart 44: Course in the Faculty of Medicine as 1 st choice	59
Chart 45: Course in the Faculty of Dental Medicine as 1 st choice	59
Chart 46: Courses in the Faculty of Psychology and Education Science as 1 st choice.....	60
Chart 47: Courses in the Institute of Biomedical Sciences Abel Salazar as 1 st choice.....	60
Chap. II – 1st and 2nd rounds of the National Competition for University Admission: summary	61
II.1. National overview	61
Table 28: List sorted by rate of places filled: comparative analysis 2007-2008.....	61
Chart 48: Rate of places filled: comparative analysis 2007-2008	61
II.2. University of Porto.....	62
Table 29: Rate of places filled and classification of last qualifying applicant per course (1 st and 2 nd rounds)	62
Chart 49: Rate of places filled per faculty: comparative analysis 2007-2008.....	64
Table 30: Proportion of successful applicants in the 1 st round but who did not complete the enrolment or were placed again in the 2 nd round, per course.....	65
Table 31: Successful applicants in the 2 nd round per admission preference and course.....	67
Sources and acronyms	69

Translation Note: For the purpose of this document, the following terms shall mean:

- Licenciatura* - Undergraduate degree
- Externato* - Day-school
- Escola secundária* – Secondary school (public)
- Colégio* - Private school
- Colégio Internato* - Private boarding-school
- Colégio Liceal* - Private grammar school (secondary level education)

Introduction

The source of the data used is the Ministry of Science, Technology and Higher Education, Directorate-General for Higher Education.

Chapter I refers only to the 1st round of the National Competition for University Admissions.

First, we present the data on the public higher education university institutions, aiming at rating the University of Porto in the national context. Our analysis – with the numbers shown first in a table and then in a chart – focuses on:

- the rate of places filled;
- the weighted average classification of the last qualifying applicant;
- a comparative analysis with the National Competition for University Admissions – 1st round 2007.

Then, we describe the situation of the 53 *licenciaturas*, *licenciatura*/1st cycle and integrated masters courses of the University of Porto, grouped by faculty, and which focuses on:

- i. Successful applicants/Admissions:
 - the rate of places filled (compared to the 2007 competition);
 - the weighted average classification of the last qualifying applicant placed (compared to the 2007 competition);
 - the round of admission;
 - the school district where exams took place;
 - the school where the exams took place;
 - gender;
 - valid preferences of placement;
- ii. Applicants:
 - the school district where exams took place;
 - the school where the exams took place;
 - gender;
 - the choice of application;
 - the proportion of applicants, regardless of choice (provided it is valid) for application, and the places available;
 - the proportion of applicants who chose the course as 1st choice (a valid choice) and the places available;
- iii. Demand in 1st choice:
 - applicants and successful applicants in 1st choice, per school district where exams took place;
 - applicants and successful applicants in 1st choice, per school where exams took place;
 - applicants and successful applicants in 1st choice, per gender;
 - percentage of successful applicants in 1st choice;
 - proportion of applicants who chose the course as 1st choice but who were unsuccessful, and the places available.

Chapter II presents a summary of the data on the two rounds of the National Competition for University Admissions 2008, and focuses on:

- the rate of places filled (compared to the 2007 competition);
- the classification of the last qualifying applicant placed (1st and 2nd rounds);
- the proportion of successful applicants in the 1st round but who did not complete the enrolment or were successful in the 2nd round;
- the preferences of placement in the 2nd round.

Chap. I – 1st round of the National Competition for University Admissions

I.1 – National overview: a comparison of the public universities

Table 1: List sorted by rate of places filled

	Places (1)	Successful Applicants (2)	Places filled (2)/(1)	Average classification*
University of Porto	4025	4010	99.6%	154.2
Technical University of Lisbon	3160	3135	99.2%	146.5
University of Aveiro	1446	1428	98.8%	139.2
University of Minho	2312	2246	97.1%	143.4
New University of Lisbon	2575	2499	97.0%	147.6
University of Trás-os-Montes and Alto Douro	1265	1215	96.0%	130.8
Higher Institute of Business and Labour Sciences	970	928	95.7%	144.5
University of Madeira	550	523	95.1%	133.5
University of Coimbra	3102	2937	94.7%	144.8
University of Beira Interior	1270	1168	92.0%	135.2
University of Azores	558	500	89.6%	130.1
University of Évora	965	857	88.8%	125.1
University of Lisbon	3675	3149	85.7%	139.8
University of Algarve	760	644	84.7%	123.8
Total – Public Higher Education - University	26633	25239	94.8%	142.9

Source: MCTES – DGES A08_1F

Table 2: List sorted by weighted average classification of the last qualifying applicant placed

	Places (1)	Successful Applicants (2)	Places filled (2)/(1)	Average classification *
University of Porto	4025	4010	99.6%	154.2
New University of Lisbon	2575	2499	97.0%	147.6
Technical University of Lisbon	3160	3135	99.2%	146.5
University of Coimbra	3102	2937	94.7%	144.8
Higher Institute of Business and Labour Sciences	970	928	95.7%	144.5
University of Minho	2312	2246	97.1%	143.4
University of Lisbon	3675	3149	85.7%	139.8
University of Aveiro	1446	1428	98.8%	139.2
University of Beira Interior	1270	1168	92.0%	135.2
University of Madeira	550	523	95.1%	133.5
University of Trás-os-Montes and Alto Douro	1265	1215	96.0%	130.8
University of Azores	558	500	89.6%	130.1
University of Évora	965	857	88.8%	125.1
University of Algarve	760	644	84.7%	123.8
Total – Public Higher Education - University	26633	25239	94.8%	142.9

Source: MCTES – DGES A08_1F

* Average classification that would be obtained if all the applicants admitted in each course had a classification equal to the classification of the last qualifying applicant in the general group. Weighting factor: no. of successful applicants in each course.

Table 3: Rate of places filled: comparative analysis 2007 – 2008

	2008			2007		
	Places	Successful applicants	%	Places	Successful applicants	%
Higher Institute of Business and Labour Sciences	970	928	95.7%	936	905	96.7%
University of Beira Interior	1270	1168	92.0%	1250	1030	82.4%
University of Madeira	550	523	95.1%	520	490	94.2%
University of Aveiro	1446	1428	98.8%	1438	1362	94.7%
University of Coimbra	3102	2937	94.7%	3076	2913	94.7%
Faculty of Sport Sciences and Physical Education	80	80	100.0%	80	80	100.0%
Faculty of Sciences and Technology	1058	1001	94.6%	1054	953	90.4%
Faculty of Law	375	375	100.0%	375	375	100.0%
Faculty of Economics	320	320	100.0%	320	320	100.0%
Faculty of Pharmacy	200	200	100.0%	190	191	100.5%
Faculty of Humanities	504	395	78.4%	504	441	87.5%
Faculty of Medicine	295	295	100.0%	279	279	100.0%
Faculty of Psychology and Education Science	270	271	100.4%	274	274	100.0%
University of Évora	965	857	88.8%	966	851	88.1%
University of Lisbon	3675	3149	85.7%	3626	3058	84.3%
Faculty of Fine Arts	250	250	100.0%	220	220	100.0%
Faculty of Sciences	930	814	87.5%	910	751	82.5%
Faculty of Law	510	510	100.0%	500	500	100.0%
Faculty of Pharmacy	210	210	100.0%	209	209	100.0%
Faculty of Humanities	1025	628	61.3%	1031	659	63.9%
Faculty of Medicine	375	375	100.0%	375	338	90.1%
Faculty of Dental Medicine	140	140	100.0%	136	136	100.0%
Faculty of Psychology and Education Sciences	235	222	94.5%	245	245	100.0%
University of Trás-os-Montes and Alto Douro	1265	1215	96.0%	1265	1112	87.9%
University of Algarve	760	644	84.7%	780	586	75.1%
Faculty of Marine and Environmental Sciences	105	88	83.8%	110	83	75.5%
Faculty of Sciences and Technology	155	151	97.4%	185	148	80.0%
Faculty of Human and Social Sciences	200	137	68.5%	215	150	69.8%
Faculty of Economics	170	160	94.1%	170	135	79.4%
Faculty of Natural Resources Engineering	100	81	81.0%	70	40	57.1%
University of Minho	2312	2246	97.1%	2317	2037	87.9%

		2008			2007		
		Places	Successful applicants	%	Places	Successful applicants	%
University of Porto		4025	4010	99.6%	3968	3947	99.5%
	Faculty of Architecture	120	120	100.0%	108	108	100.0%
	Faculty of Fine Arts	140	140	100.0%	140	140	100.0%
	Faculty of Sciences	665	657	98.8%	655	655	100.0%
	Faculty of Nutrition and Food Science	65	65	100.0%	65	66	101.5%
	Faculty of Sport	110	110	100.0%	110	110	100.0%
	Faculty of Law	175	175	100.0%	170	170	100.0%
	Faculty of Economics	330	330	100.0%	330	330	100.0%
	Faculty of Engineering	830	830	100.0%	810	811	100.1%
	Faculty of Pharmacy	185	185	100.0%	185	185	100.0%
	Faculty of Arts	650	642	98.8%	650	625	96.2%
	Faculty of Medicine	245	245	100.0%	240	241	100.4%
	Faculty of Dental Medicine	90	90	100.0%	90	90	100.0%
	Faculty of Psychology and Education Science	170	170	100.0%	170	170	100.0%
	Institute of Biomedical Sciences Abel Salazar	250	251	100.4%	245	246	100.4%
University of Azores		558	500	89.6%	540	395	73.1%
New University of Lisbon		2575	2499	97.0%	2485	2423	97.5%
	Faculty of Sciences and Technology	1070	1057	98.8%	1070	1020	95.3%
	Faculty of Medical Sciences	230	230	100.0%	210	217	103.3%
	Faculty of Human and Social Sciences	725	660	91.0%	705	686	97.3%
	Faculty of Law	100	100	100.0%	100	100	100.0%
	Faculty of Economics	390	392	100.5%	360	360	100.0%
	Higher Institute of Statistics and Information Management	60	60	100.0%	40	40	100.0%
Technical University of Lisbon		3160	3135	99.2%	3133	2937	93.7%
	Faculty of Architecture	285	285	100.0%	268	251	93.7%
	Faculty of Veterinary Medicine	95	95	100.0%	95	95	100.0%
	Faculty of Motor Skill Development	224	225	100.4%	224	223	99.6%
	Higher Institute of Agronomy	240	240	100.0%	240	240	100.0%
	Higher Institute of Social and Political Sciences	432	432	100.0%	441	413	93.7%
	Higher Institute of Economics and Management	445	445	100.0%	445	445	100.0%
	Technical Higher Institute	1439	1413	98.2%	1420	1270	89.4%
Public Higher Education – University		26633	25239	94.8%	26300	24046	91.4%

Sources: MCTES – DGES A08_1F and MCTES – DGES A07_1F

Table 4: Summary 1st round – Places, applicants, successful applicants and surplus places

	Public Higher Education	Public Higher Education-University	U.Porto		
	(1)	(2)	(3)	(3)/(1)	(3)/(2)
Places	50219	26633	4025	8.0%	15.1%
Applicants	53062	n/a	13990	26.4%	--
Applicants in 1 st choice	53062	n/a	7045	13.3%	--
Successful applicants	44336	25239	4010	9.0%	15.9%
Successful applicants in 1 st choice	23366	n/a	2486	10.6%	--
Surplus places	5917	1414	17	0.3%	1.2%

n/a = not available

Sources: MCTES – DGES A08_1F and MCTES – DGES BD_U.Porto_08_1F

Table 5: Weight of public universities – Places and successful applicants

	Places (1)	Successful applicants (2)	(1)/Total (3)	(2)/Total (4)
University of Porto	4025	4010	15.1%	15.9%
University of Lisbon	3675	3149	13.8%	12.5%
Technical University of Lisbon	3160	3135	11.9%	12.4%
University of Coimbra	3102	2937	11.6%	11.6%
New University of Lisbon	2575	2499	9.7%	9.9%
University of Minho	2312	2246	8.7%	8.9%
University of Aveiro	1446	1428	5.4%	5.7%
University of Beira Interior	1270	1168	4.8%	4.6%
University of Trás-os-Montes and Alto Douro	1265	1215	4.7%	4.8%
Higher Institute of Business and Labour Sciences	970	928	3.6%	3.7%
University of Évora	965	857	3.6%	3.4%
University of Algarve	760	644	2.9%	2.6%
University of Madeira	550	523	2.1%	2.1%
University of Azores	558	500	2.1%	2.0%
Total – Public Higher Education - University	26633	25239	100.0%	100.0%
	(3)	(4)		

Source: MCTES – DGES A08_1F

Chart 1: Rate of places filled of public universities

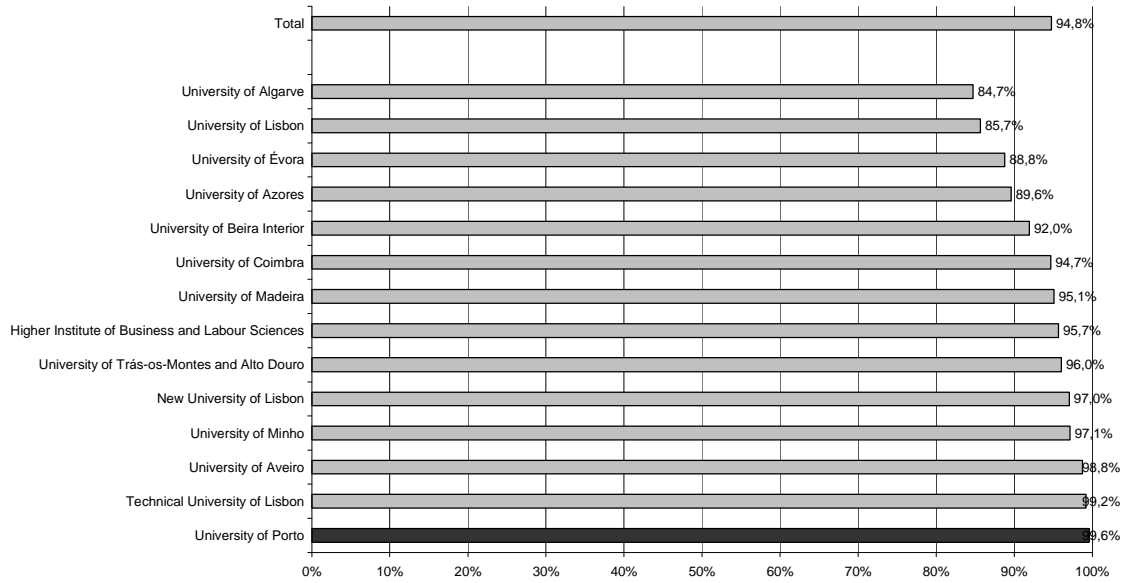


Chart 2: Weighted average classification of the last qualifying applicant to public universities

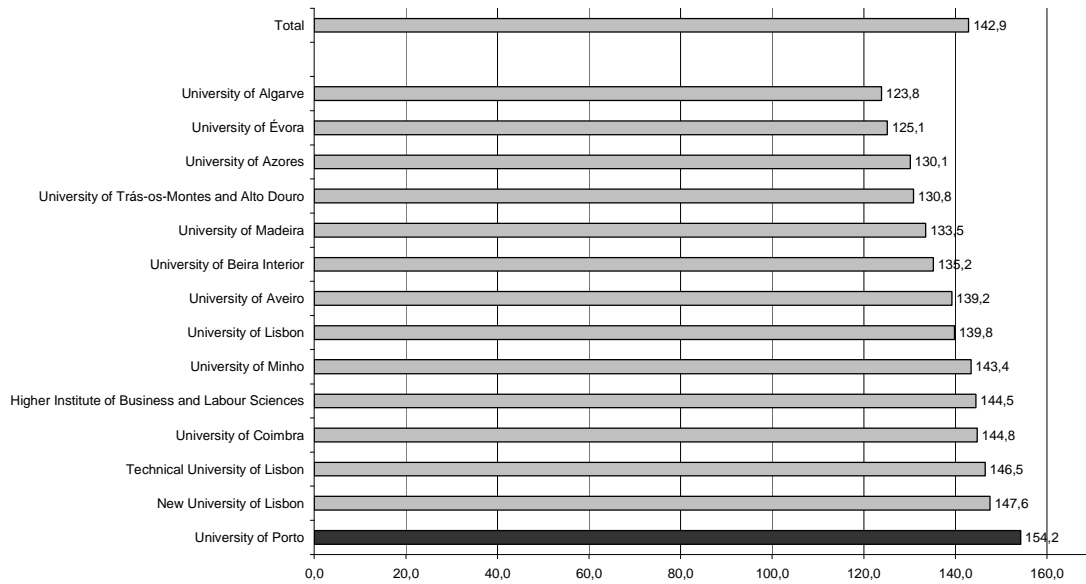


Chart 3: Rate of places filled in public universities: comparative analysis 2007 – 2008

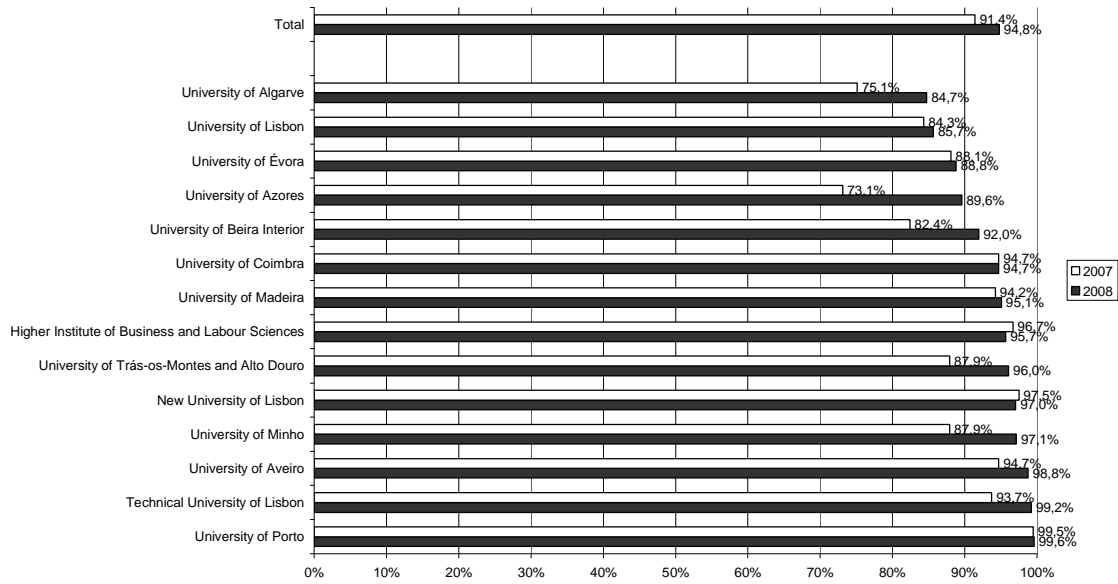
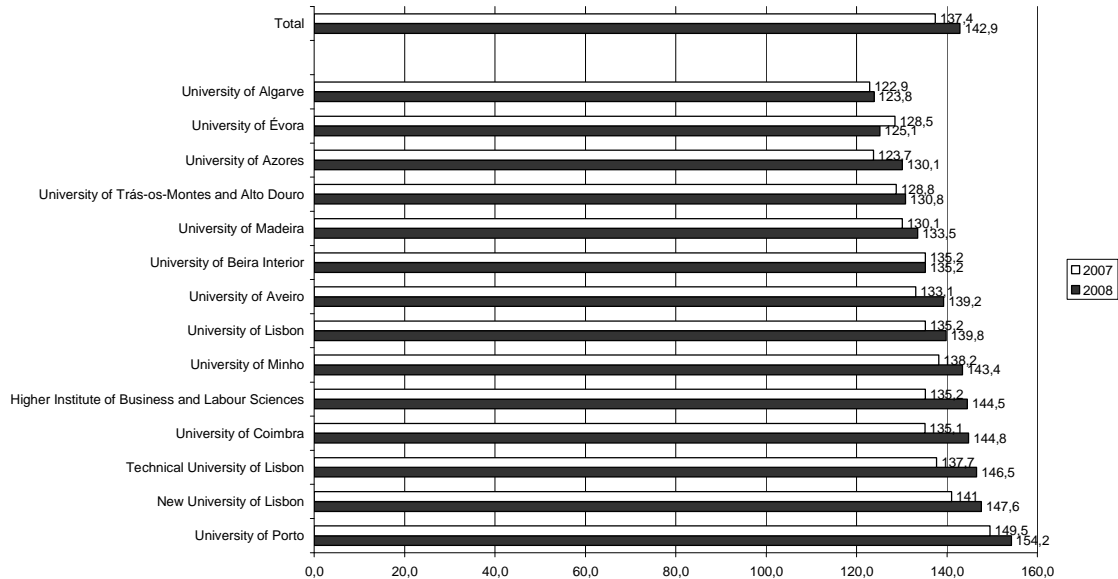


Chart 4: Weighted average classification of the last qualifying applicant to public universities: comparative analysis 2007 – 2008



I.2 – University of Porto

I.2.1 – Successful applicants

Table 6: U.Porto: comparative analysis 2007-2008 of places, successful applicants, rate of places filled and classification of the last qualifying applicant, per course

	2008				2007			
	Places	Successful applicants	Rate of places filled	Classification of last qualifying applicant (general group)	Places	Successful applicants	Rate of places filled	Classification of last qualifying applicant (general group)
Faculty of Architecture	120	120	100%	180.0	108	108	100%	182
Architecture	120	120	100%	180	108	108	100%	182
Faculty of Fine Arts	140	140	100%	160.0*	140	140	100%	164.0*
Plastic Arts	90	90	100%	153	90	90	100%	159
Communication Design	50	50	100%	172.5	50	50	100%	173
Faculty of Sciences	665	657	98.8%	135.6*	655	655	100%	131.8*
Landscape Architecture	25	25	100%	140	25	25	100%	137.5
Astronomy	20	20	100%	127	20	20	100%	132.5
Biology	130	130	100%	144	135	135	100%	148.5
Biochemistry	70	70	100%	161	70	70	100%	158.5
Computer Science	40	40	100%	134	45	45	100%	112.5
Engineering Sciences	45	45	100%	133.5	45	45	100%	118.3
Environmental Sciences and Technology	40	40	100%	141.2	35	35	100%	140.6
Network Engineering and IT Systems	70	70	100%	140.5	70	70	100%	121
Physical Engineering	25	25	100%	137.5	20	20	100%	141
Physics	30	22	73.3%	116.5	30	30	100%	127
Geology	30	30	100%	126.5	20	20	100%	128.5
Mathematics	50	50	100%	128	50	50	100%	110.5
Chemistry	90	90	100%	111.5	90	90	100%	118
Faculty of Nutrition and Food Science	65	65	100%	161.3	65	66	102%	158.5
Nutrition Sciences	65	65	100%	161.3	65	66	102%	158.5
Faculty of Sport	110	110	100%	141.5	110	110	100%	142
Sports Sciences	110	110	100%	141.5	110	110	100%	142
Faculty of Law	175	175	100%	165.7*	170	170	100%	153.3*
Criminology	35	35	100%	174	20	20	100%	172.2
Law	140	140	100%	163.6	150	150	100%	150.8
Faculty of Economics	330	330	100%	161.3*	330	330	100%	147.2*
Economics	216	216	100%	162.3	216	216	100%	148.3
Management	114	114	100%	159.5	114	114	100%	145

		2008				2007			
		Places	Successful applicants	Rate of places filled	Classification of last qualifying applicant (general group)	Places	Successful applicants	Rate of places filled	Classification of last qualifying applicant (general group)
Faculty of Engineering		830	830	100%	156.5*	810	811	100%	146.5*
	Bioengineering	60	60	100%	180.5	40	40	100%	178.8
	Engineering Sciences – Mining and Geo-Environmental Engineering	10	10	100%	142	10	10	100%	132
	Civil Engineering	175	175	100%	149.5	175	176	101%	139.5
	Environmental Engineering	40	40	100%	154.8	40	40	100%	142.5
	Electrical and Computers Engineering	195	195	100%	151.8	195	195	100%	143.8
	Industrial Engineering and Management	50	50	100%	176.3	50	50	100%	168
	Informatics and Computing Engineering	102	102	100%	161.8	102	102	100%	154.3
	Mechanical Engineering	112	112	100%	162.8	112	112	100%	150.8
	Metallurgical and Materials Engineering	21	21	100%	149	21	21	100%	135.3
	Chemical Engineering	65	65	100%	138.3	65	65	100%	126
Faculty of Pharmacy		185	185	100%	166.3	185	185	100%	163
	Pharmaceutical Sciences	185	185	100%	166.3	185	185	100%	163
Faculty of Arts		650	642	98.8%	134.6*	650	625	96%	130.8*
	Archaeology	35	35	100%	125.6	40	39	98%	109.8
	Information Science	40	40	100%	142	40	40	100%	137.8
	Communication Sciences: Journalism, Public Relations and Multimedia	75	75	100%	160	75	75	100%	161.6
	Language Sciences	20	20	100%	133.2	20	20	100%	125.4
	Portuguese and Lusophone Studies	20	20	100%	119.2	20	20	100%	125.4
	Philosophy	65	56	86.2%	105.8	70	70	100%	114.6
	Geography	80	81	101.3%	119	80	80	100%	126.4
	History	80	80	100%	122	90	79	88%	105.8
	History of Art	35	35	100%	118.8	40	27	68%	117.4
	Applied Languages	30	30	100%	156.8	20	20	100%	156.8
	Languages and International Relations	35	35	100%	160.4	20	20	100%	175.4
	Languages, Literatures and Cultures	85	85	100%	146.4	85	85	100%	137.6
	Sociology	50	50	100%	141.2	50	50	100%	135.8
Faculty of Medicine		245	245	100%	185.2	240	241	100%	186.3
	Medicine	245	245	100%	185.2	240	241	100%	186.3
Faculty of Dental Medicine		90	90	100%	173.3	90	90	100%	171.5
	Dental Medicine	90	90	100%	173.3	90	90	100%	171.5

	2008				2007			
	Places	Successful applicants	Rate of places filled	Classification of last qualifying applicant (general group)	Places	Successful applicants	Rate of places filled	Classification of last qualifying applicant (general group)
Faculty of Psychology and Education Science	170	170	100%	146.8*	170	170	100%	154.3*
Education Sciences	55	55	100%	136	55	55	100%	147.5
Psychology	115	115	100%	152	115	115	100%	157.5
Institute of Biomedical Sciences Abel Salazar	250	251	100%	175.5*	245	246	100%	174.9*
Aquatic Sciences	35	35	100%	142.5	35	35	100%	145.5
Medicine	155	156	100.6%	183.7	150	150	100%	182
Veterinary Medicine	60	60	100%	173.5	60	61	102%	174.5
U.Porto total	4025	4010	99.6%	154.2*	3968	3947	99%	149.5*

* Average classification that would be obtained if all applicants admitted to each course had a classification equal to the classification of the last qualifying applicant in the general group. Weighting factor: no. of successful applicants to each course.
Sources: MCTES – DGES A08_1F and MCTES – DGES A07_1F

Chart 5: Rate of places filled per faculty: comparative analysis 2007-2008

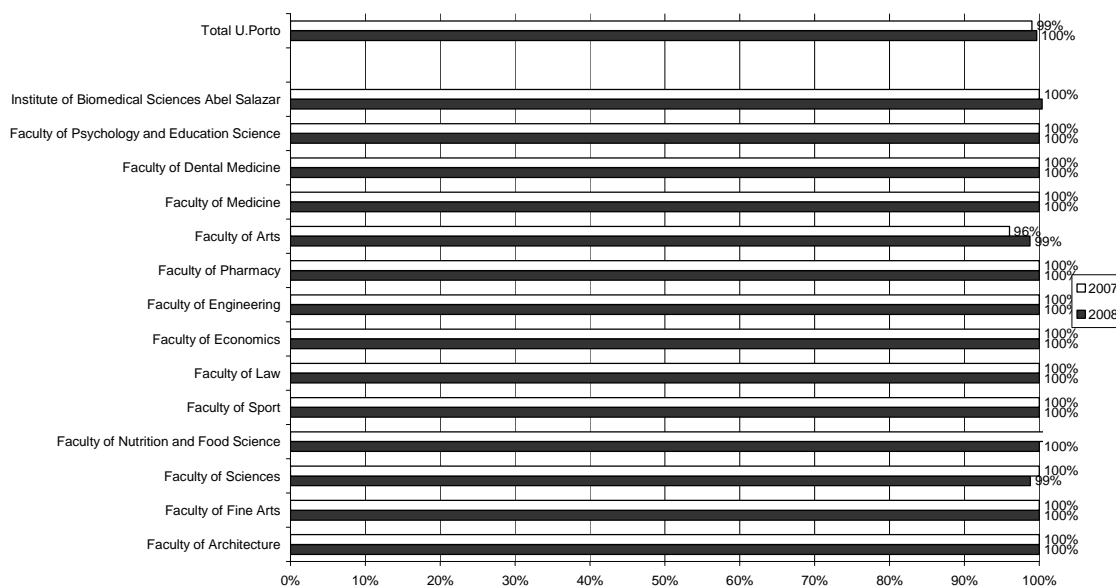


Chart 6: Weighted average classification of the last qualifying applicant, per faculty: comparative analysis 2007-2008

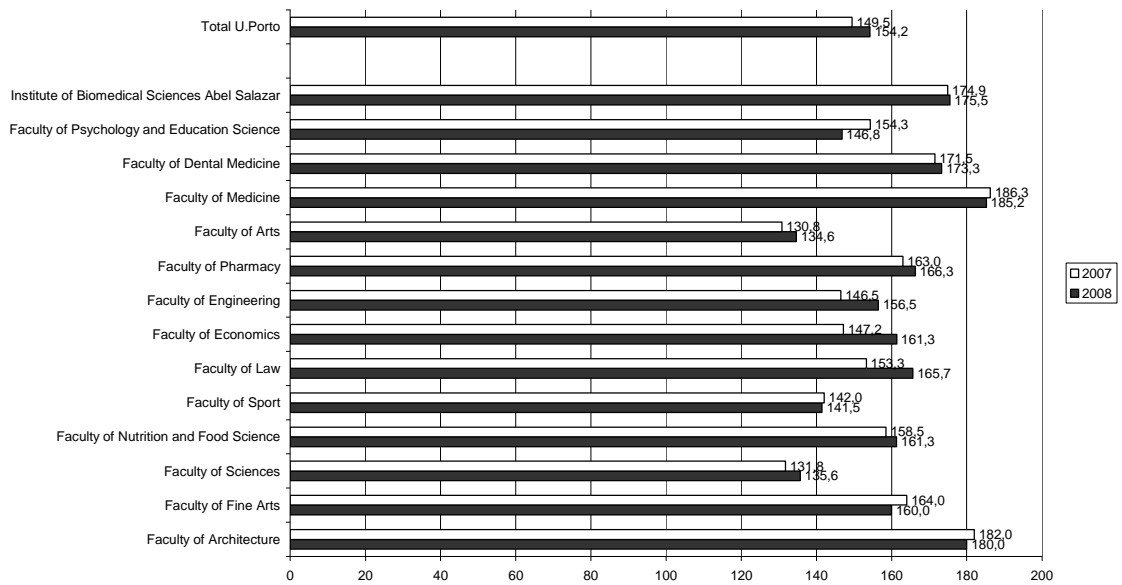


Table 7: Successful applicants per placement round

	Total	%
General	3860	96.3%
Madeira	72	1.8%
Azores	31	0.8%
Emigrants	20	0.5%
Applicants with disabilities	17	0.4%
Military	10	0.2%
U.Porto total	4010	100.0%

Source: MCTES – DGES BD_U.Porto_08_1F

Table 8: Successful applicants per school district where exams took place

	Total	%	Cumulative %
Porto	2432	60.6%	60.6%
Braga	404	10.1%	70.7%
Aveiro	396	9.9%	80.6%
Viana do Castelo	169	4.2%	84.8%
Vila Real	118	2.9%	87.8%
Viseu	118	2.9%	90.7%
Autonomous Region of Madeira	78	1.9%	92.6%
Bragança	73	1.8%	94.5%
Autonomous Region of the Azores	39	1.0%	95.4%
Coimbra	38	0.9%	96.4%
Leiria	29	0.7%	97.1%
Guarda	21	0.5%	97.6%
Lisboa	20	0.5%	98.1%
Santarém	16	0.4%	98.5%
Castelo Branco	11	0.3%	98.8%
Faro	10	0.2%	99.1%
Overseas	6	0.1%	99.2%
Setúbal	5	0.1%	99.3%
Beja	3	0.1%	99.4%
Portalegre	3	0.1%	99.5%
Évora	1	0.0%	99.5%
(blank)	20	0.5%	100.0%
U.Porto total	4010	100.0%	

Source: MCTES – DGES BD_U.Porto_08_1F

Chart 7: Total and cumulative percentage of successful applicants per school district where exams took place

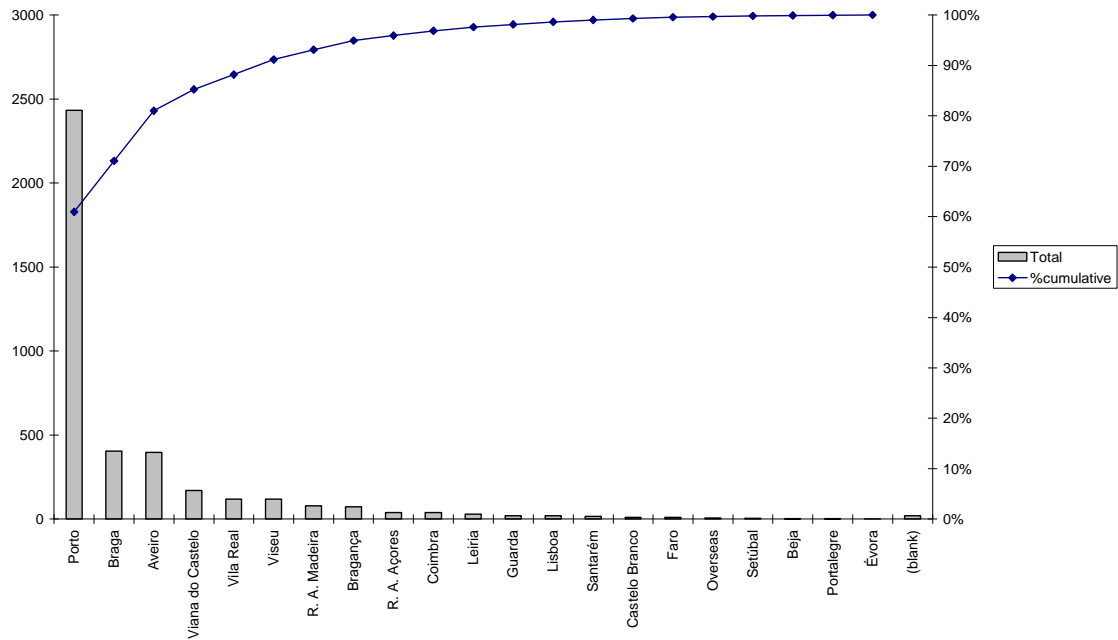


Table 9: Successful applicants per school where exams took place (top 50)

	Total
Externato Ribadouro	153
Escola Secundária/3 Garcia de Orta	112
Escola Secundária/3 de Almeida Garrett	88
Escola Secundária/3 Aurélia de Sousa	80
Escola Secundária/3 de Rio Tinto	75
Colégio Internato dos Carvalhos	68
Escola Secundária/3 Filipa de Vilhena	63
Escola Secundária/3 Augusto Gomes	62
Colégio Nossa Senhora do Rosário	59
Escola Secundária/3 da Maia	59
Escola Secundária Eça de Queirós - Póvoa de Varzim	55
Escola Secundária/3 de Ermesinde	54
Escola Secundária Alves Martins	51
Escola Secundária/3 Alexandre Herculano	51
Escola Secundária/3 Rodrigues de Freitas	48
Escola Secundária/3 de Valongo	46
Escola Secundária/3 Dr. Manuel Gomes de Almeida	44
Escola Secundária/3 Dr. Manuel Laranjeira	43
Escola Secundária/3 de Gondomar	43
Escola Secundária/3 António Sérgio	41
Escola Secundária/3 de Penafiel	41
Colégio Liceal de Santa Maria de Lamas	41
Colégio Luso-Francês	40
Externato D. Duarte	39
Escola Secundária Soares dos Reis	38
Escola Secundária/3 de Águas Santas	37
Externato Paulo VI	36
Escola Secundária/3 Francisco de Holanda	36
Escola Secundária Jaime Moniz	36
Escola Secundária de Monserrate	36
Escola Secundária/3 da Trofa	35
Escola Secundária/3 Abel Salazar	34
Escola Secundária/3 Carolina Michaelis	34
Escola Secundária/3 João Gonçalves Zarco	34
Colégio Ellen Key	33
Escola Secundária/3 da Boa Nova - Leça da Palmeira	32
Escola Secundária/3 de Padrão da Légua	32
Escola Secundária/3 de Inês de Castro	31
Escola Secundária/3 de Amarante	30
Escola Secundária/3 de Marco de Canaveses	29

	Total
Escola Secundária/3 D. Sancho I	29
Escola Secundária/3 de Santa Maria da Feira	29
Escola Secundária/3 José Régio	29
Escola Secundária/3 do Castelo da Maia	28
Escola Secundária/3 de Paços de Ferreira	27
Escola Secundária/3 D. Dinis (Santo Tirso)	27
Escola Secundária/3 de Paredes	27
Escola Secundária/3 Henrique Medina	26
Escola Secundária D. Afonso Sanches	25
Escola Secundária/3 da Senhora da Hora	25
Escola Secundária/3 António Nobre	25

Source: MCTES – DGES BD_U.Porto_08_1F

Table 10: Successful applicants per gender and course

	F	M	Total
Faculty of Architecture	68	52	120
Architecture	68	52	120
Faculty of Fine Arts	96	44	140
Plastic Arts	60	30	90
Communication Design	36	14	50
Faculty of Sciences	353	304	657
Landscape Architecture	14	11	25
Astronomy	7	13	20
Biology	98	32	130
Biochemistry	45	25	70
Computer Science	8	32	40
Engineering Sciences	26	19	45
Environmental Sciences and Technology	23	17	40
Network Engineering and IT Systems	10	60	70
Physical Engineering	10	15	25
Physics	5	17	22
Geology	13	17	30
Mathematics	29	21	50
Chemistry	65	25	90
Faculty of Nutrition and Food Science	55	10	65
Nutrition Sciences	55	10	65
Faculty of Sport	42	68	110
Sports Sciences	42	68	110

	F	M	Total
Faculty of Law	126	49	175
Criminology	29	6	35
Law	97	43	140
Faculty of Economics	147	183	330
Economics	96	120	216
Management	51	63	114
Faculty of Engineering	245	585	830
Bioengineering	36	24	60
Engineering Sciences – Mining and Geo-Environmental Engineering	3	7	10
Civil Engineering	60	115	175
Environmental Engineering	19	21	40
Electrical and Computers Engineering	24	171	195
Industrial Engineering and Management	20	30	50
Informatics and Computing Engineering	20	82	102
Mechanical Engineering	17	95	112
Metallurgical and Materials Engineering	7	14	21
Chemical Engineering	39	26	65
Faculty of Pharmacy	137	48	185
Pharmaceutical Sciences	137	48	185
Faculty of Arts	424	218	642
Archeology	18	17	35
Information Science	25	15	40
Communication Sciences: Journalism, Public Relations and Multimedia	60	15	75
Language Sciences	19	1	20
Portuguese and Lusophone Studies	13	7	20
Philosophy	28	28	56
Geography	45	36	81
History	42	38	80
History of Art	24	11	35
Applied Languages	21	9	30
Languages and International Relations	26	9	35
Languages, Literatures and Cultures	65	20	85
Sociology	38	12	50
Faculty of Medicine	140	105	245
Medicine	140	105	245

	F	M	Total
Faculty of Dental Medicine	57	33	90
Dental Medicine	57	33	90
Faculty of Psychology and Education Science	150	20	170
Education Sciences	50	5	55
Psychology	100	15	115
Institute of Biomedical Sciences Abel Salazar	167	84	251
Aquatic Sciences	20	15	35
Medicine	104	52	156
Veterinary Medicine	43	17	60
U.Porto total	2207	1803	4010

Source: MCTES – DGES BD_U.Porto_08_1F

Table 11: Successful applicants per gender and faculty

	F	M	Total
Faculty of Architecture	68	52	120
Faculty of Fine Arts	96	44	140
Faculty of Sciences	353	304	657
Faculty of Nutrition and Food Science	55	10	65
Faculty of Sport	42	68	110
Faculty of Law	126	49	175
Faculty of Economics	147	183	330
Faculty of Engineering	245	585	830
Faculty of Pharmacy	137	48	185
Faculty of Arts	424	218	642
Faculty of Medicine	140	105	245
Faculty of Dental Medicine	57	33	90
Faculty of Psychology and Education Science	150	20	170
Institute of Biomedical Sciences Abel Salazar	167	84	251
U.Porto total	2207	1803	4010
	55%	45%	

Source: MCTES – DGES BD_U.Porto_08_1F

Chart 8: Successful applicants per gender and faculty, in percentage

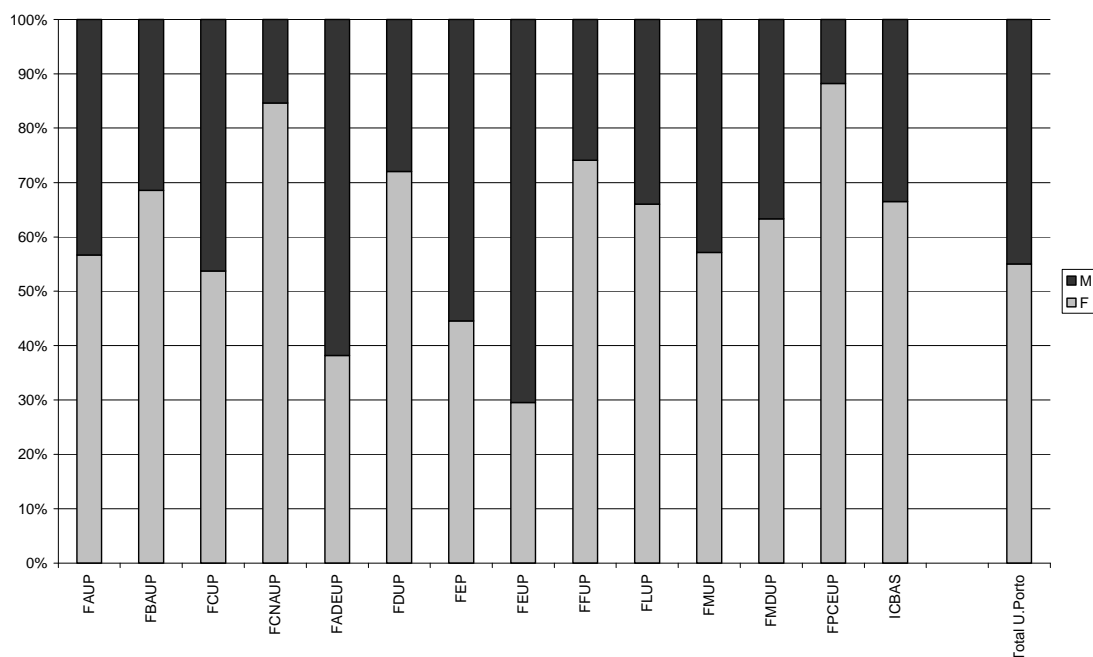


Table 12: Successful applicants per admission preference and course

	1	2	3	4	5	6	Total
Faculty of Architecture	113	3			2	2	120
Architecture	113	3			2	2	120
Faculty of Fine Arts	99	35	5	1			140
Plastic Arts	58	26	5	1			90
Communication Design	41	9					50
Faculty of Sciences	252	142	97	80	50	36	657
Landscape Architecture	15	4	3	2		1	25
Astronomy	12	1	2	2	3		20
Biology	51	30	23	16	6	4	130
Biochemistry	22	18	13	10	3	4	70
Computer Science	15	7	8	5	1	4	40
Engineering Sciences	17	8	8	6	4	2	45
Environmental Sciences and Technology	12	11	6	4	6	1	40
Network Engineering and IT Systems	22	23	9	7	6	3	70
Physical Engineering	15	6	1		1	2	25
Physics	13	5	2	1		1	22
Geology	12	3	2	2	4	7	30
Mathematics	28	4	6	4	4	4	50
Chemistry	18	22	14	21	12	3	90
Faculty of Nutrition and Food Science	23	5	1	12	7	17	65
Nutrition Sciences	23	5	1	12	7	17	65

	1	2	3	4	5	6	Total
Faculty of Sport	100	7	1	1	1		110
Sports Sciences	100	7	1	1	1		110
Faculty of Law	152	10	6	6		1	175
Criminology	28	1	3	2		1	35
Law	124	9	3	4			140
Faculty of Economics	292	32	4	1		1	330
Economics	205	7	3			1	216
Management	87	25	1	1			114
Faculty of Engineering	525	154	57	35	42	17	830
Bioengineering	38	2	1	5	11	3	60
Engineering Sciences - Mining and Geo-Environmental Engineering		4	1	1	2	2	10
Civil Engineering	114	31	11	10	5	4	175
Environmental Engineering	18	11	3	3	4	1	40
Electrical and Computers Engineering	128	47	13	3	4		195
Industrial Engineering and Management	40	3	3	1	2	1	50
Informatics and Computing Engineering	88	4	4	2	2	2	102
Mechanical Engineering	72	37	1	1		1	112
Metallurgical and Materials Engineering	4	3	6	4	4		21
Chemical Engineering	23	12	14	5	8	3	65
Faculty of Pharmacy	68	15	23	26	32	21	185
Pharmaceutical Sciences	68	15	23	26	32	21	185
Faculty of Arts	371	113	76	44	17	21	642
Archaeology	26	4		4		1	35
Information Science	17	8	11		3	1	40
Communication Sciences: Journalism, Public Relations, Multimedia	68	6	1				75
Language Sciences	8	6	1	4		1	20
Portuguese and Lusophone Studies	6	2	3	8	1		20
Philosophy	13	13	13	6	3	8	56
Geography	41	16	8	8	3	5	81
History	42	16	10	5	2	5	80
History of Art	17	11	5		2		35
Applied Languages	24	1	3	2			30
Languages and International Relations	30	5					35
Languages, Literatures and Cultures	59	15	7	3	1		85
Sociology	20	10	14	4	2		50
Faculty of Medicine	233	9	2	1			245
Medicine	233	9	2	1			245

	1	2	3	4	5	6	Total
Faculty of Dental Medicine	17	4	11	11	23	24	90
Dental Medicine	17	4	11	11	23	24	90
Faculty of Psychology and Education Science	101	31	20	6	6	6	170
Education Sciences	21	18	11	1	2	2	55
Psychology	80	13	9	5	4	4	115
Institute of Biomedical Sciences Abel Salazar	140	59	15	15	10	12	251
Aquatic Sciences	14	5	5	6	1	4	35
Medicine	102	51	2	1			156
Veterinary Medicine	24	3	8	8	9	8	60
U.Porto total	2486	619	318	239	190	158	4010

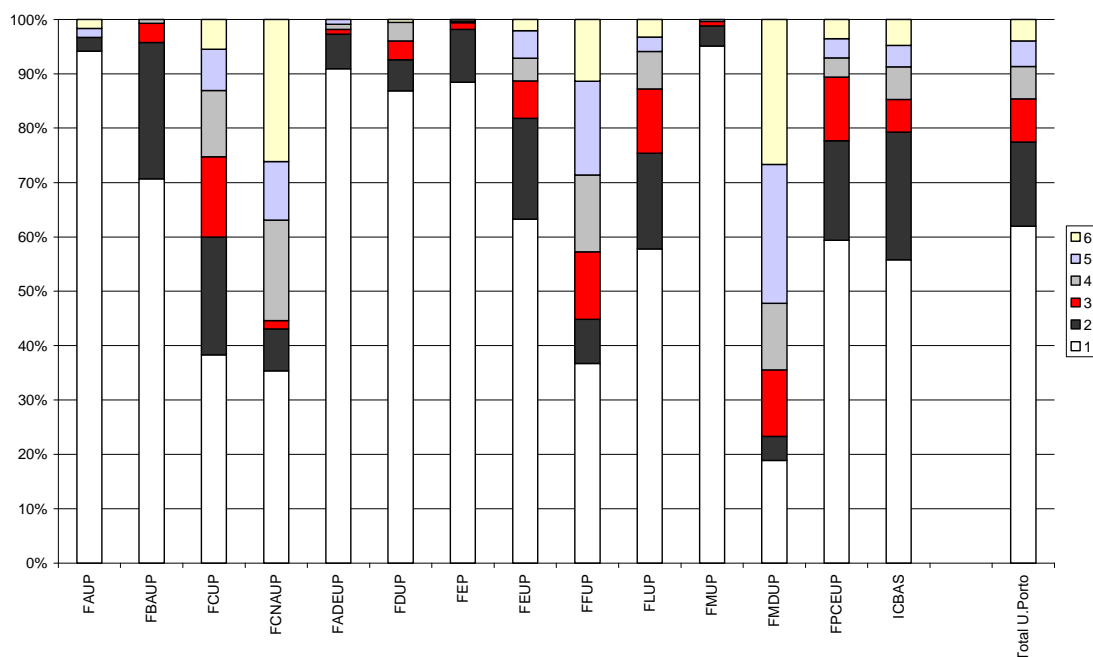
Source: MCTES – DGES BD_U.Porto_08_1F

Table 13: Successful applicants per admission preference and faculty

	1	2	3	4	5	6	Total
Faculty of Architecture	113	3			2	2	120
Faculty of Fine Arts	99	35	5	1			140
Faculty of Sciences	252	142	97	80	50	36	657
Faculty of Nutrition and Food Science	23	5	1	12	7	17	65
Faculty of Sport	100	7	1	1	1		110
Faculty of Law	152	10	6	6		1	175
Faculty of Economics	292	32	4	1		1	330
Faculty of Engineering	525	154	57	35	42	17	830
Faculty of Pharmacy	68	15	23	26	32	21	185
Faculty of Arts	371	113	76	44	17	21	642
Faculty of Medicine	233	9	2	1			245
Faculty of Dental Medicine	17	4	11	11	23	24	90
Faculty of Psychology and Education Science	101	31	20	6	6	6	170
Institute of Biomedical Sciences Abel Salazar	140	59	15	15	10	12	251
U.Porto total	2486	619	318	239	190	158	4010
	62%	15%	8%	6%	5%	4%	100%

Source: MCTES – DGES BD_U.Porto_08_1F

Chart 9: Successful applicants per admission preference and faculty, in percentage



I.2.2 – Applicants

Table 14: Applicants per school district where exams took place

	Total	%	Cumulative %
Porto	5933	42.4%	42.4%
Braga	1824	13.0%	55.4%
Aveiro	1432	10.2%	65.7%
Lisboa	721	5.2%	70.8%
Viseu	548	3.9%	74.8%
Viana do Castelo	531	3.8%	78.5%
Coimbra	412	2.9%	81.5%
Autonomous Region of Madeira	370	2.6%	84.1%
Vila Real	346	2.5%	86.6%
Leiria	328	2.3%	89.0%
Santarém	279	2.0%	91.0%
Setúbal	241	1.7%	92.7%
Autonomous Region of the Azores	240	1.7%	94.4%
Bragança	213	1.5%	95.9%
Guarda	159	1.1%	97.0%
Faro	141	1.0%	98.1%
Castelo Branco	111	0.8%	98.8%
Évora	48	0.3%	99.2%
Beja	31	0.2%	99.4%
Portalegre	22	0.2%	99.6%
Overseas	20	0.1%	99.7%
(blank)	40	0.3%	100.0%
U.Porto total	13990		

Source: MCTES – DGES BD_U.Porto_08_1F

Chart 10: Total and cumulative percentage of applicants per school district where exams took place

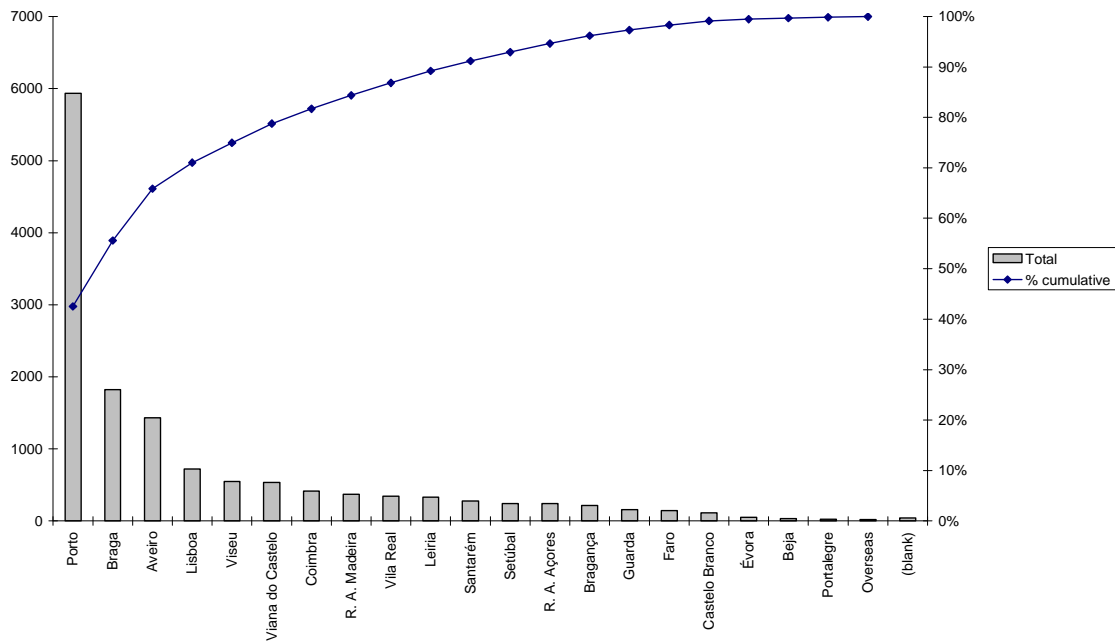


Table 15: Applicants per school where exams took place (top 50)

	Total
Externato Ribadouro	258
Escola Secundária/3 Garcia de Orta	231
Escola Secundária Alves Martins	172
Escola Secundária Jaime Moniz	169
Escola Secundária/3 de Rio Tinto	166
Escola Secundária/3 da Maia	166
Escola Secundária/3 de Almeida Garrett	164
Escola Secundária/3 Alexandre Herculano	151
Escola Secundária Carlos Amarante	149
Escola Secundária/3 Filipa de Vilhena	148
Escola Secundária/3 Aurélia de Sousa	145
Colégio Internato dos Carvalhos	143
Escola Secundária Eça de Queirós - Póvoa de Varzim	141
Escola Secundária/3 Francisco de Holanda	140
Escola Secundária/3 Augusto Gomes	131
Escola Secundária/3 de Ermesinde	129
Externato D. Duarte	128
Escola Secundária de Monserrate	122
Escola Secundária/3 de Penafiel	120
Escola Secundária/3 de Valongo	114
Escola Secundária/3 de Gondomar	113
Escola Secundária/3 D. Maria II	104
Colégio Liceal de Santa Maria de Lamas	103

	Total
Escola Secundária/3 Rodrigues de Freitas	102
Escola Secundária/3 Alcaides de Faria - Arcozelo	102
Escola Secundária/3 Dr. Manuel Gomes de Almeida	100
Escola Secundária/3 Sá de Miranda	97
Escola Secundária Santa Maria Maior	97
Escola Secundária/3 António Sérgio	96
Escola Secundária/3 da Trofa	95
Escola Secundária/3 da Boa Nova - Leça da Palmeira	94
Escola Secundária Soares dos Reis	91
Externato Carvalho Araújo	90
Escola Secundária/3 Alberto Sampaio	90
Escola Secundária/3 de Águas Santas	87
Colégio Nossa Senhora do Rosário	87
Escola Secundária/3 Dr. Manuel Laranjeira	86
Escola Secundária/3 Carolina Michaelis	85
Escola Secundária/3 D. Sancho I	85
Escola Secundária/3 de Amarante	83
Escola Secundária/3 de Marco de Canaveses	82
Escola Secundária/3 de Paços de Ferreira	82
Escola Secundária/3 de Santa Maria da Feira	81
Escola Secundária D. Afonso Sanches	81
Escola Secundária/3 de Felgueiras	81
Escola Secundária/3 António Nobre	80
Escola Secundária/3 João Gonçalves Zarco	80
Externato Paulo VI	79
Escola Secundária/3 de Fafe	79
Escola Secundária/3 Camilo Castelo Branco-V.N.Famalicão	78

Source: MCTES – DGES BD_U.Porto_08_1F

Table 16: Applicants per gender and course

	F	M	Total
Faculty of Architecture	314	257	571
Architecture	314	257	571
Faculty of Fine Arts	355	194	549
Plastic Arts	232	124	356
Communication Design	224	133	357
Faculty of Sciences	1244	1304	2548
Landscape Architecture	91	59	150
Astronomy	48	52	100
Biology	411	190	601
Biochemistry	391	160	551

	F	M	Total
Computer Science	53	267	320
Engineering Sciences	98	88	186
Environmental Sciences and Technology	166	122	288
Network Engineering and IT Systems	62	517	579
Physical Engineering	39	111	150
Physics	22	83	105
Geology	71	73	144
Mathematics	117	88	205
Chemistry	166	70	236
Faculty of Nutrition and Food Science	444	72	516
Nutrition Sciences	444	72	516
Faculty of Sport	144	295	439
Sports Sciences	144	295	439
Faculty of Law	1213	510	1723
Criminology	579	210	789
Law	891	400	1291
Faculty of Economics	531	566	1097
Economics	380	457	837
Management	437	460	897
Faculty of Engineering	1142	2357	3499
Bioengineering	297	248	545
Engineering Sciences - Mining and Geo-Environmental Engineering	34	69	103
Civil Engineering	253	547	800
Environmental Engineering	287	248	535
Electrical and Computers Engineering	113	902	1015
Industrial Engineering and Management	184	369	553
Informatics and Computing Engineering	122	630	752
Mechanical Engineering	137	844	981
Metallurgical and Materials Engineering	67	171	238
Chemical Engineering	191	119	310
Faculty of Pharmacy	841	287	1128
Pharmaceutical Sciences	841	287	1128
Faculty of Arts	1516	678	2194
Archaeology	71	60	131
Information Science	206	120	326
Communication Sciences: Journalism, Public Relations and Multimedia	436	159	595
Language Sciences	124	42	166
Portuguese and Lusophone Studies	53	31	84

	F	M	Total
Philosophy	83	75	158
Geography	136	128	264
History	160	155	315
History of Art	66	23	89
Applied Languages	154	59	213
Languages and International Relations	256	113	369
Languages, Literatures and Cultures	244	92	336
Sociology	370	127	497
Faculty of Medicine	910	460	1370
Medicine	910	460	1370
Faculty of Dental Medicine	522	219	741
Dental Medicine	522	219	741
Faculty of Psychology and Education Science	637	96	733
Education Sciences	246	32	278
Psychology	453	69	522
Institute of Biomedical Sciences Abel Salazar	1256	631	1887
Aquatic Sciences	105	53	158
Medicine	930	484	1414
Veterinary Medicine	272	115	387
U.Porto total	7856	6140	13990

Note: In the sub-totals of faculties with more than one course and in the U.Porto total (as applicants may have applied to more than one course), each applicant is counted only once.

Source: MCTES – DGES BD_U.Porto_08_1F

Table 17: Applicants per gender and faculty

	F	M	Total
Faculty of Architecture	314	257	571
Faculty of Fine Arts	355	194	549
Faculty of Sciences	1244	1304	2548
Faculty of Nutrition and Food Science	444	72	516
Faculty of Sport	144	295	439
Faculty of Law	1213	510	1723
Faculty of Economics	531	566	1097
Faculty of Engineering	1142	2357	3499
Faculty of Pharmacy	841	287	1128
Faculty of Arts	1516	678	2194
Faculty of Medicine	910	460	1370
Faculty of Dental Medicine	522	219	741
Faculty of Psychology and Education Science	637	96	733
Institute of Biomedical Sciences Abel Salazar	1256	631	1887
U.Porto total	7856	6140	13990
	56%	44%	

Source: MCTES – DGES BD_U.Porto_08_1F

Chart 11: Applicants per gender and faculty, in percentage

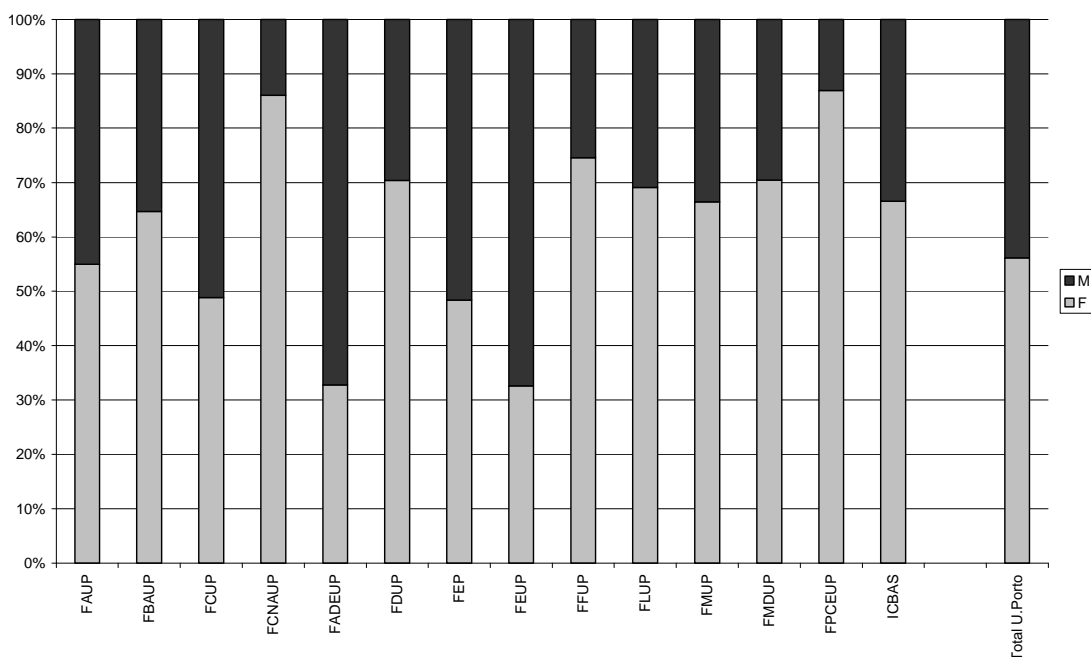


Table 18: Applicants per application choice and course

	1	2	3	4	5	6	Total
Faculty of Architecture	284	104	69	39	44	31	571
Architecture	284	104	69	39	44	31	571
Faculty of Fine Arts	275	109	71	43	32	19	549
Plastic Arts	136	94	57	27	21	21	356
Communication Design	139	101	51	27	28	11	357
Faculty of Sciences	535	472	467	403	370	301	2548
Landscape Architecture	44	18	33	21	21	13	150
Astronomy	13	6	15	21	21	24	100
Biology	114	123	103	104	85	72	601
Biochemistry	81	101	88	92	107	82	551
Computer Science	34	54	59	73	51	49	320
Engineering Sciences	33	22	29	30	33	39	186
Environmental Sciences and Technology	37	61	67	45	50	28	288
Network Engineering and IT Systems	76	112	128	106	100	57	579
Physical Engineering	21	24	36	20	24	25	150
Physics	13	23	13	21	15	20	105
Geology	23	23	25	27	20	26	144
Mathematics	28	30	31	27	31	58	205
Chemistry	18	36	47	57	42	36	236

	1	2	3	4	5	6	Total
Faculty of Nutrition and Food Science	156	77	59	70	69	85	516
Nutrition Sciences	156	77	59	70	69	85	516
Faculty of Sport	258	75	53	31	14	8	439
Sports Sciences	258	75	53	31	14	8	439
Faculty of Law	647	313	226	280	141	116	1723
Criminology	254	122	105	124	83	101	789
Law	393	302	188	225	110	73	1291
Faculty of Economics	709	111	104	70	61	42	1097
Economics	420	205	65	65	47	35	837
Management	289	319	90	95	61	43	897
Faculty of Engineering	1654	539	446	323	317	220	3499
Bioengineering	174	90	80	83	68	50	545
Engineering Sciences - Mining and Geo-Environmental Engineering	11	19	20	19	21	13	103
Civil Engineering	220	164	147	113	89	67	800
Environmental Engineering	110	81	81	83	101	79	535
Electrical and Computers Engineering	262	270	186	122	106	69	1015
Industrial Engineering and Management	223	82	107	43	62	36	553
Informatics and Computing Engineering	280	139	104	102	74	53	752
Mechanical Engineering	298	245	162	115	96	65	981
Metallurgical and Materials Engineering	28	38	58	44	39	31	238
Chemical Engineering	48	42	56	45	61	58	310
Faculty of Pharmacy	348	182	178	147	143	130	1128
Pharmaceutical Sciences	348	182	178	147	143	130	1128
Faculty of Arts	785	401	347	290	205	166	2194
Archaeology	37	23	15	21	20	15	131
Information Science	51	53	73	61	50	38	326
Communication Sciences: Journalism, Public Relations and Multimedia	257	116	74	67	48	33	595
Language Sciences	21	29	30	37	30	19	166
Portuguese and Lusophone Studies	6	10	20	23	11	14	84
Philosophy	13	22	38	30	24	31	158
Geography	48	47	50	46	35	38	264
History	54	52	59	50	52	48	315
History of Art	17	17	24	15	8	8	89
Applied Languages	46	59	39	37	17	15	213
Languages and International Relations	73	80	83	57	51	25	369

	1	2	3	4	5	6	Total
Languages, Literatures and Cultures	100	75	64	49	27	21	336
Sociology	62	100	91	98	87	59	497
Faculty of Medicine	547	328	161	212	94	28	1370
Medicine	547	328	161	212	94	28	1370
Faculty of Dental Medicine	150	93	94	98	134	172	741
Dental Medicine	150	93	94	98	134	172	741
Faculty of Psychology and Education Science	218	134	131	96	93	61	733
Education Sciences	48	70	52	36	44	28	278
Psychology	170	88	92	72	59	41	522
Institute of Biomedical Sciences Abel Salazar	479	619	298	218	195	78	1887
Aquatic Sciences	31	18	33	36	17	23	158
Medicine	333	536	207	156	150	32	1414
Veterinary Medicine	115	69	73	41	46	43	387
U.Porto total	7045	2299	1693	1442	961	550	13990

Note: In the sub-totals of faculties with more than one course and in the U.Porto total (as applicants may have applied to more than one course), each applicant is counted only in their highest (valid) choice.

Source: MCTES – DGES BD_U.Porto_08_1F

Table 19: Applicants per application choice and faculty

	1	2	3	4	5	6	Total
Faculty of Architecture	284	104	69	39	44	31	571
Faculty of Fine Arts	275	109	71	43	32	19	549
Faculty of Sciences	535	472	467	403	370	301	2548
Faculty of Nutrition and Food Science	156	77	59	70	69	85	516
Faculty of Sport	258	75	53	31	14	8	439
Faculty of Law	647	313	226	280	141	116	1723
Faculty of Economics	709	111	104	70	61	42	1097
Faculty of Engineering	1654	539	446	323	317	220	3499
Faculty of Pharmacy	348	182	178	147	143	130	1128
Faculty of Arts	785	401	347	290	205	166	2194
Faculty of Medicine	547	328	161	212	94	28	1370
Faculty of Dental Medicine	150	93	94	98	134	172	741
Faculty of Psychology and Education Science	218	134	131	96	93	61	733
Institute of Biomedical Sciences Abel Salazar	479	619	298	218	195	78	1887
U.Porto total	7045	2299	1693	1442	961	550	13990
	50%	16%	12%	10%	7%	4%	

Note: In the sub-totals of faculties with more than one course and in the U.Porto total (as applicants may have applied to more than one course), each applicant is counted only in their highest (valid) choice.

Source: MCTES – DGES BD_U.Porto_08_1F

Chart 12: Applicants per application choice and faculty, in percentage

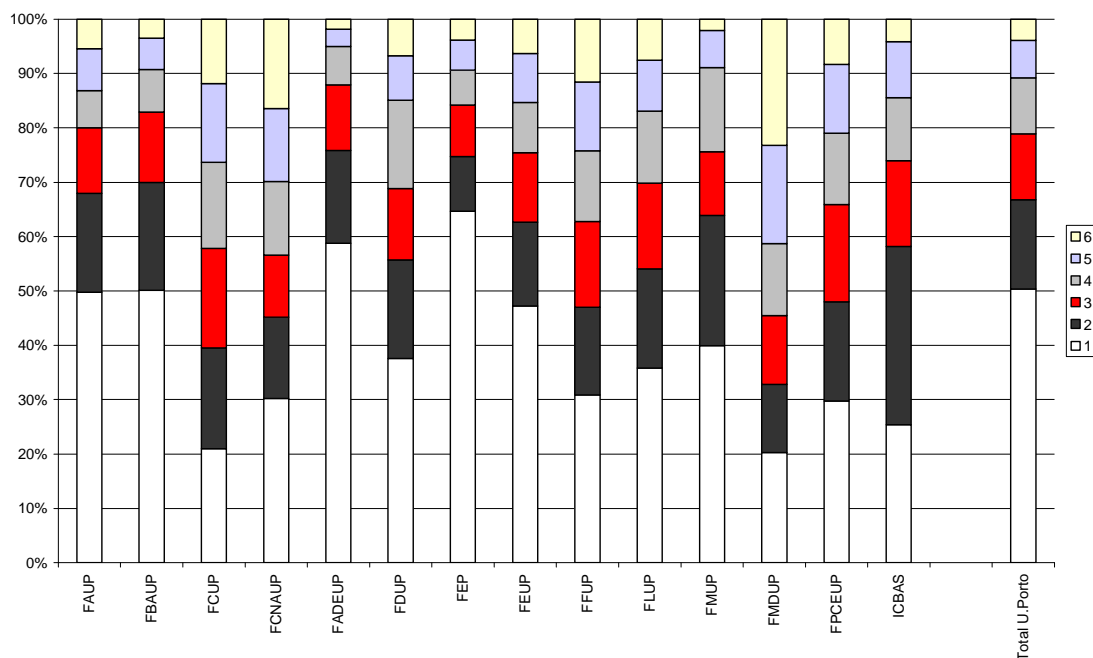


Table 20: U.Porto: Rate of places filled and demand per course

	Places	Successful applicants	Rate of places filled	Applicants *	Applicants per place	Applicants 1 st choice	Applicants 1 st choice per place
Faculty of Architecture	120	120	100%	571	4.8	284	2.4
Architecture	120	120	100%	571	4.8	284	2.4
Faculty of Fine Arts	140	140	100%	549*	3.9	275	2.0
Plastic Arts	90	90	100%	356	4.0	136	1.5
Communication Design	50	50	100%	357	7.1	139	2.8
Faculty of Sciences	665	657	98.8%	2548*	3.8	535	0.8
Landscape Architecture	25	25	100%	150	6.0	44	1.8
Astronomy	20	20	100%	100	5.0	13	0.7
Biology	130	130	100%	601	4.6	114	0.9
Biochemistry	70	70	100%	551	7.9	81	1.2
Computer Science	40	40	100%	320	8.0	34	0.9
Engineering Sciences	45	45	100%	186	4.1	33	0.7
Environmental Sciences and Technology	40	40	100%	288	7.2	37	0.9
Network Engineering and IT Systems	70	70	100%	579	8.3	76	1.1
Physical Engineering	25	25	100%	150	6.0	21	0.8
Physics	30	22	73.3%	105	3.5	13	0.4
Geology	30	30	100%	144	4.8	23	0.8
Mathematics	50	50	100%	205	4.1	28	0.6
Chemistry	90	90	100%	236	2.6	18	0.2

	Places	Successful applicants	Rate of places filled	Applicants *	Applicants per place	Applicants 1 st choice	Applicants 1 st choice per place
Faculty of Nutrition and Food Science	65	65	100%	516	7.9	156	2.4
Nutrition Sciences	65	65	100%	516	7.9	156	2.4
Faculty of Sport	110	110	100%	439	4.0	258	2.3
Sports Sciences	110	110	100%	439	4.0	258	2.3
Faculty of Law	175	175	100%	1723*	9.8	647	3.7
Criminology	35	35	100%	789	22.5	254	7.3
Law	140	140	100%	1291	9.2	393	2.8
Faculty of Economics	330	330	100%	1097*	3.3	709	2.1
Economics	216	216	100%	837	3.9	420	1.9
Management	114	114	100%	897	7.9	289	2.5
Faculty of Engineering	830	830	100%	3499*	4.2	1654	2.0
Bioengineering	60	60	100%	545	9.1	174	2.9
Engineering Sciences - Mining and Geo-Environmental Engineering	10	10	100%	103	10.3	11	1.1
Civil Engineering	175	175	100%	800	4.6	220	1.3
Environmental Engineering	40	40	100%	535	13.4	110	2.8
Electrical and Computers Engineering	195	195	100%	1015	5.2	262	1.3
Industrial Engineering and Management	50	50	100%	553	11.1	223	4.5
Informatics and Computing Engineering	102	102	100%	752	7.4	280	2.7
Mechanical Engineering	112	112	100%	981	8.8	298	2.7
Metallurgical and Materials Engineering	21	21	100%	238	11.3	28	1.3
Chemical Engineering	65	65	100%	310	4.8	48	0.7
Faculty of Pharmacy	185	185	100%	1128	6.1	348	1.9
Pharmaceutical Sciences	185	185	100%	1128	6.1	348	1.9
Faculty of Arts	650	642	98.8%	2194*	3.4	785	1.2
Archaeology	35	35	100%	131	3.7	37	1.1
Information Science	40	40	100%	326	8.2	51	1.3
Communication Sciences: Journalism, Public Relations and Multimedia	75	75	100%	595	7.9	257	3.4
Language Sciences	20	20	100%	166	8.3	21	1.1
Portuguese and Lusophone Studies	20	20	100%	84	4.2	6	0.3
Philosophy	65	56	86.2%	158	2.4	13	0.2
Geography	80	81	101.3%	264	3.3	48	0.6
History	80	80	100%	315	3.9	54	0.7
History of Art	35	35	100%	89	2.5	17	0.5
Applied Languages	30	30	100%	213	7.1	46	1.5
Languages and International Relations	35	35	100%	369	10.5	73	2.1
Languages, Literatures and Cultures	85	85	100%	336	4.0	100	1.2
Sociology	50	50	100%	497	9.9	62	1.2

	Places	Successful applicants	Rate of places filled	Applicants *	Applicants per place	Applicants 1 st choice	Applicants 1 st choice per place
Faculty of Medicine	245	245	100%	1370	5.6	547	2.2
Medicine	245	245	100%	1370	5.6	547	2.2
Faculty of Dental Medicine	90	90	100%	741	8.2	150	1.7
Dental Medicine	90	90	100%	741	8.2	150	1.7
Faculty of Psychology and Education Science	170	170	100%	733*	4.3	218	1.3
Education Sciences	55	55	100%	278	5.1	48	0.9
Psychology	115	115	100%	522	4.5	170	1.5
Institute of Biomedical Sciences Abel Salazar	250	251	100%	1887*	7.5	479	1.9
Aquatic Sciences	35	35	100%	158	4.5	31	0.9
Medicine	155	156	100.6%	1414	9.1	333	2.1
Veterinary Medicine	60	60	100%	387	6.5	115	1.9
U.Porto total	4025	4010	99.6%	13990*	3.5	7045	1.8

* Actual no. of applicants applying in any (valid) choice to a faculty's courses, and not the sum of applications to each course in the said faculty. In the faculties with more than one course (as applicants may have applied to more than one), we cannot compare this figure with those prior to 2007, where the total per faculty was the sum of applications to courses.

Source: MCTES – DGES BD_U.Porto_08_1F

Chart 13: Rate of places filled and demand, per faculty

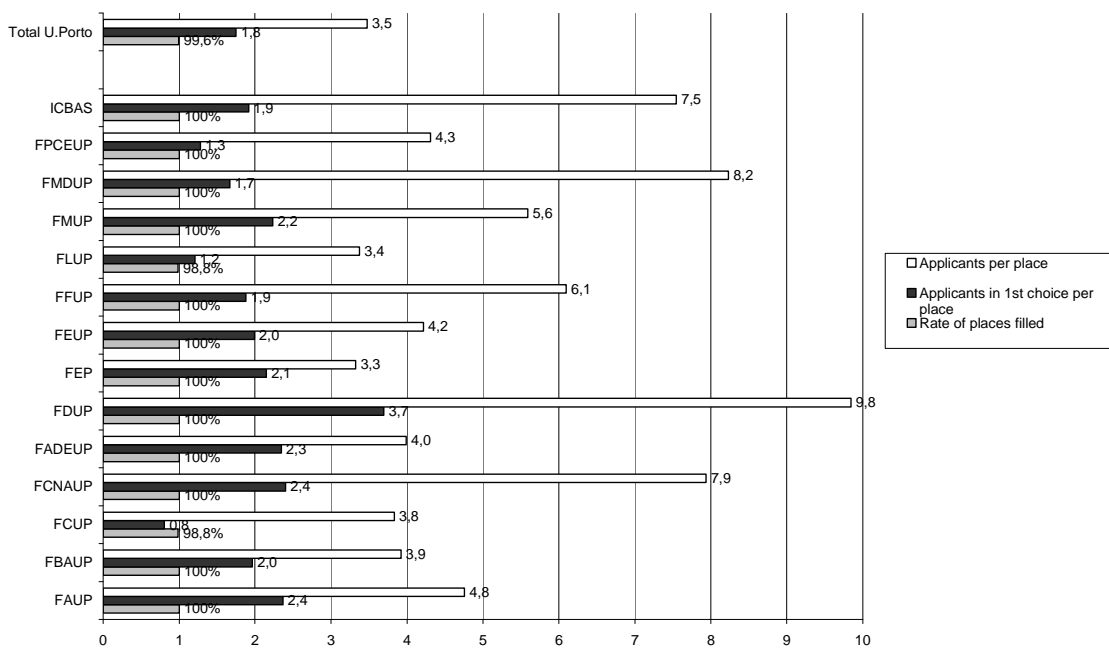


Chart 14: Rate of places filled and course demand for the Faculty of Architecture

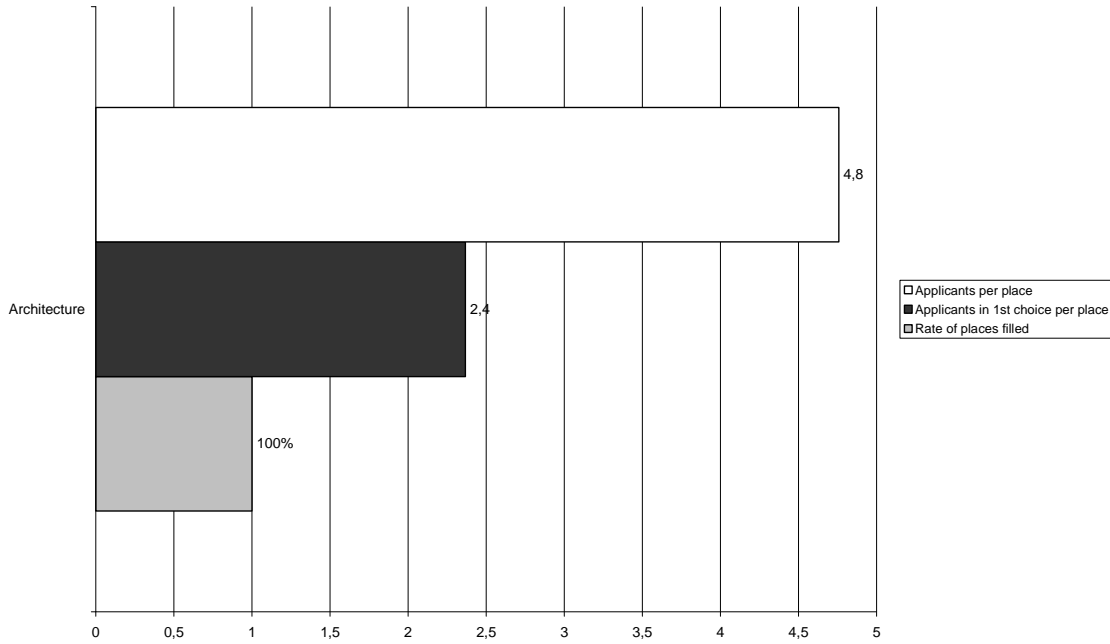


Chart 15: Rate of places filled and course demand for the Faculty of Fine Arts

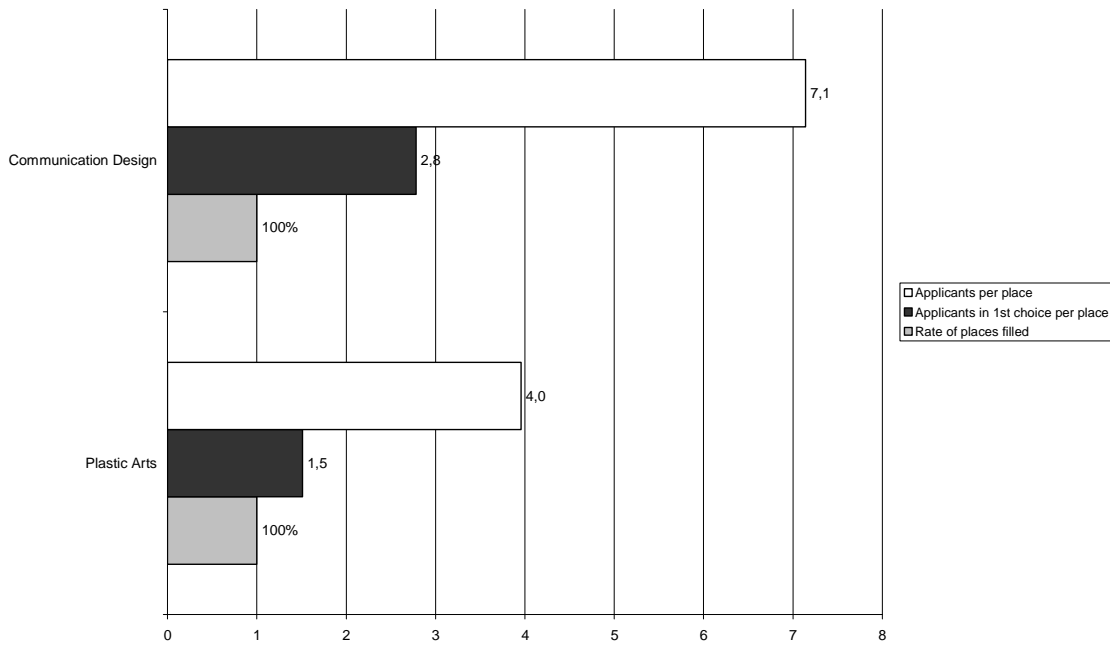


Chart 16: Rate of places filled and course demand for the Faculty of Sciences

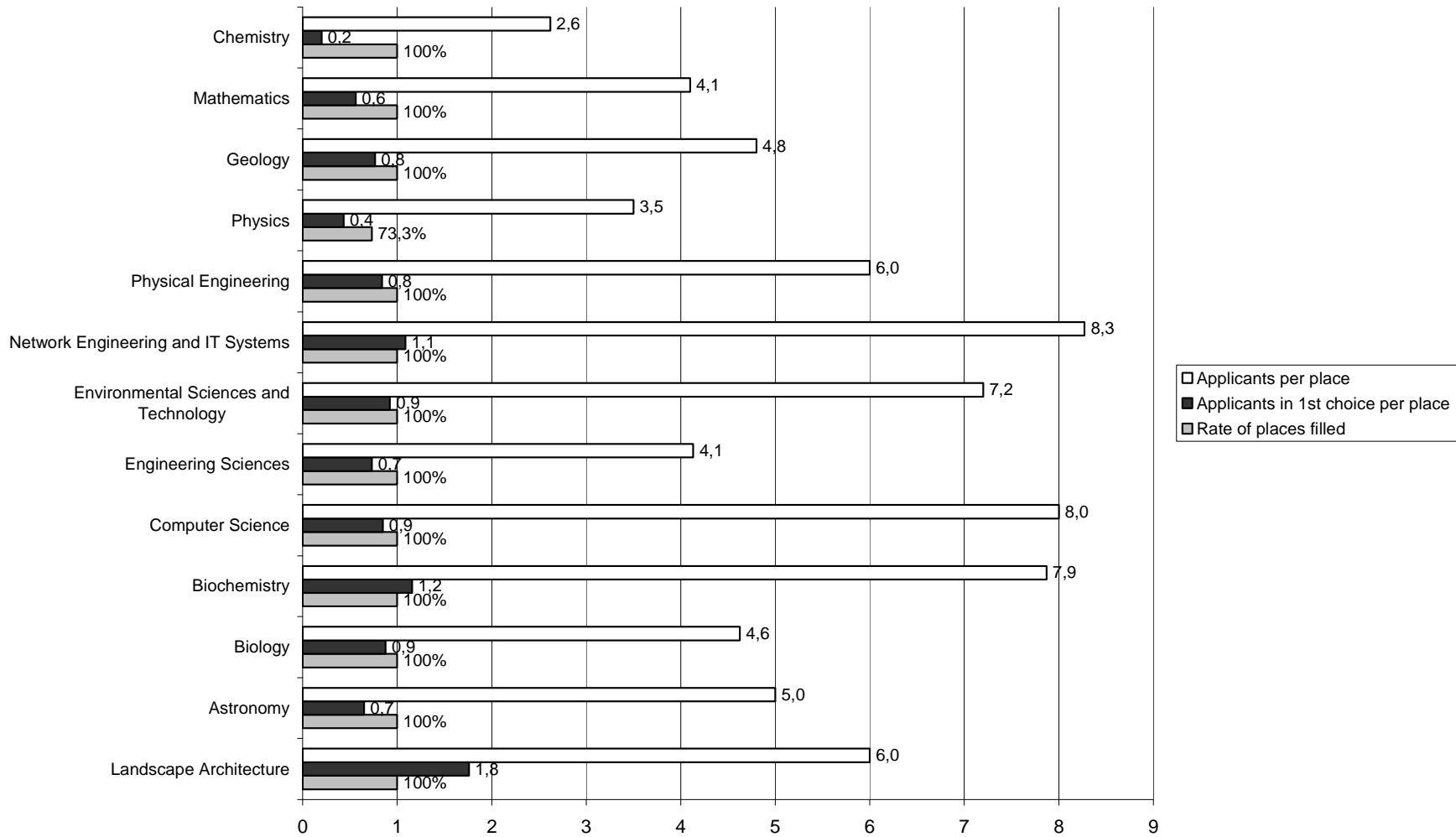


Chart 17: Rate of places filled and course demand for the Faculty of Nutrition and Food Science

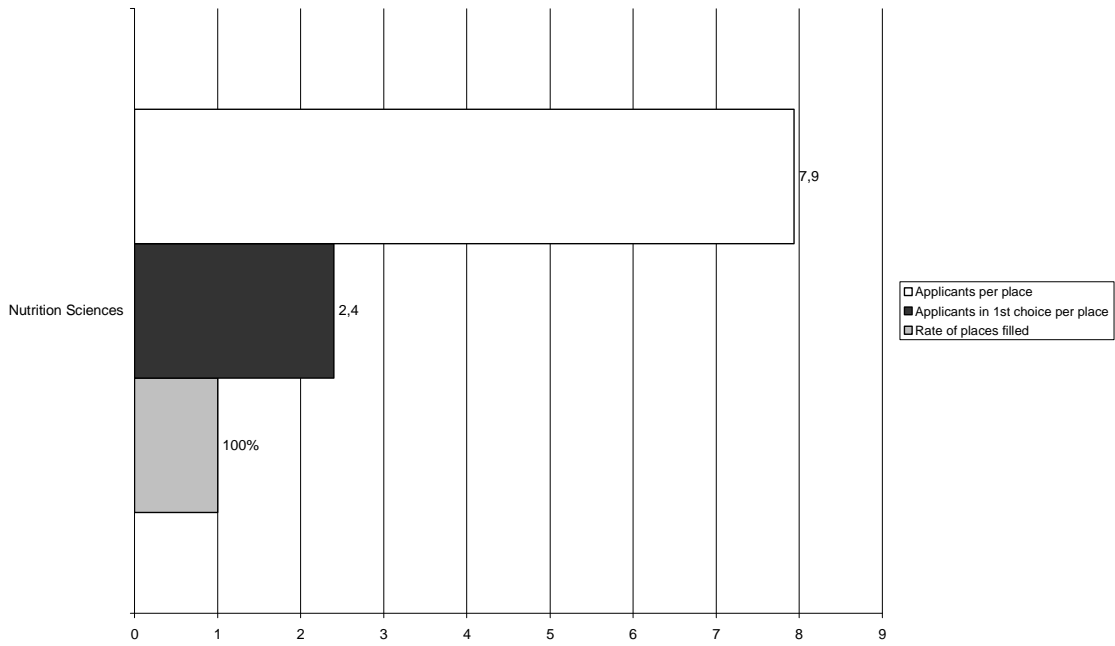


Chart 18: Rate of places filled and course demand for the Faculty of Sport

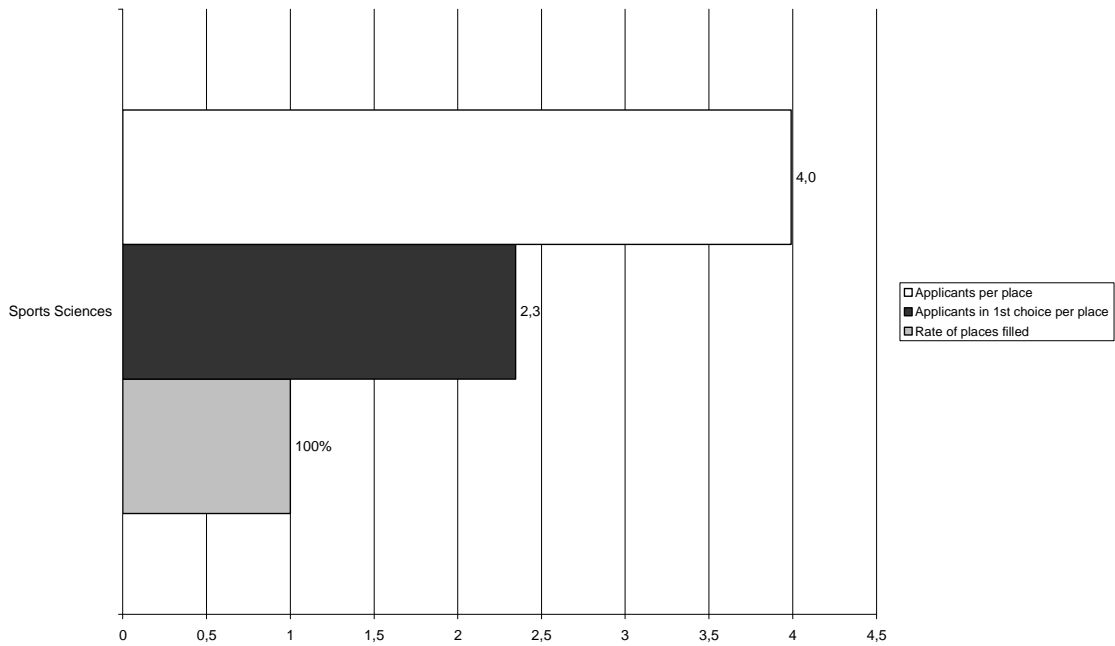


Chart 19: Rate of places filled and course demand for the Faculty of Law

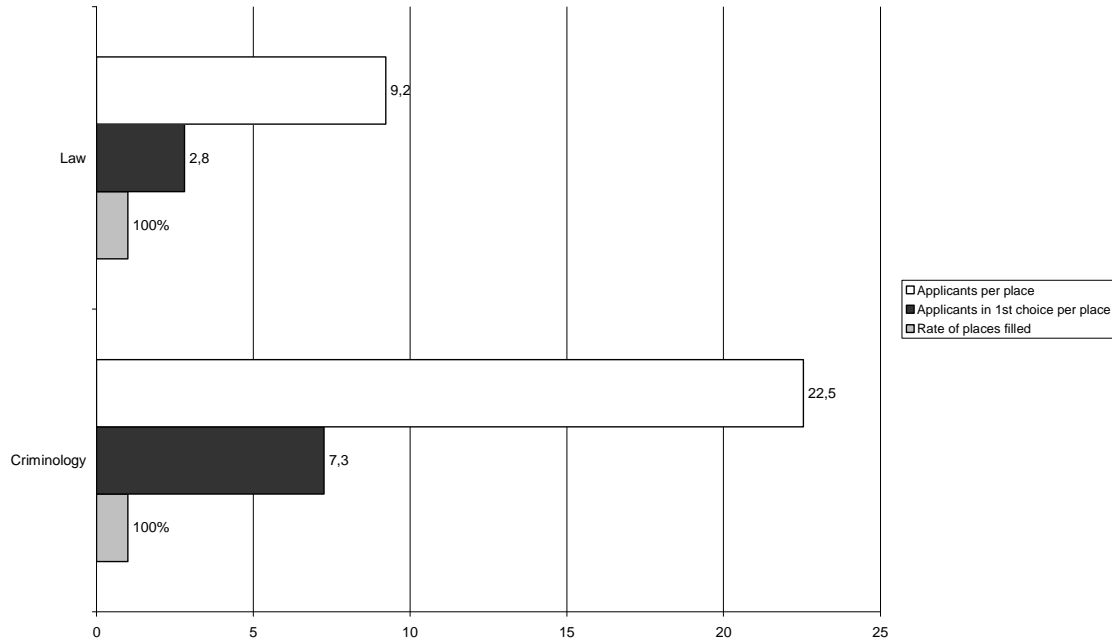


Chart 20: Rate of places filled and course demand for the Faculty of Economics

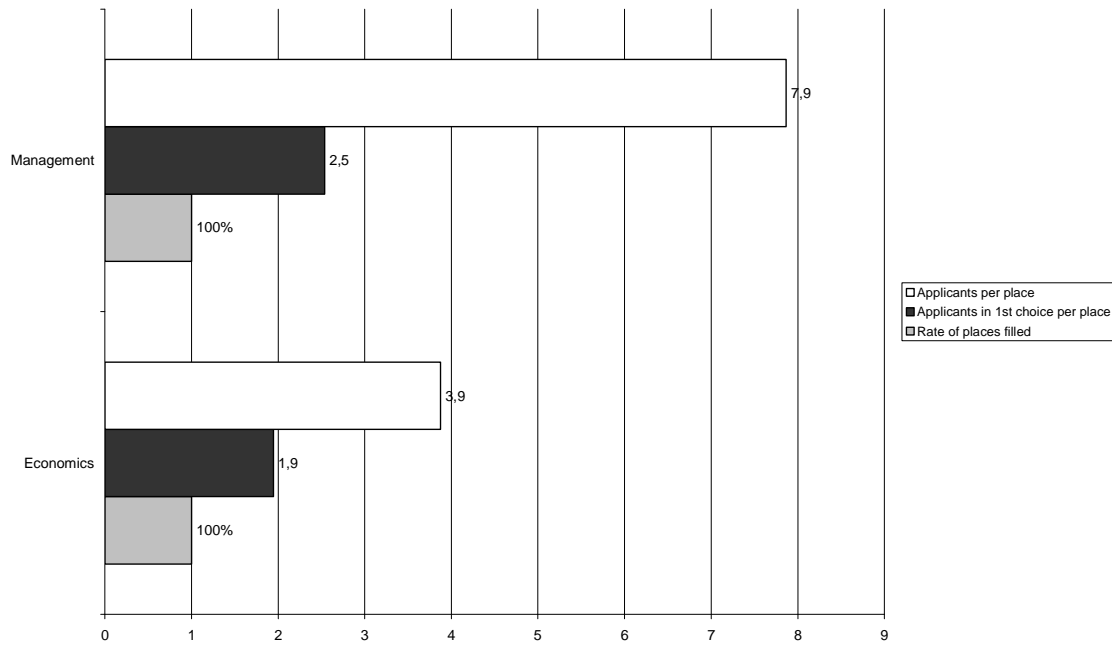


Chart 21: Rate of places filled and course demand for the Faculty of Engineering

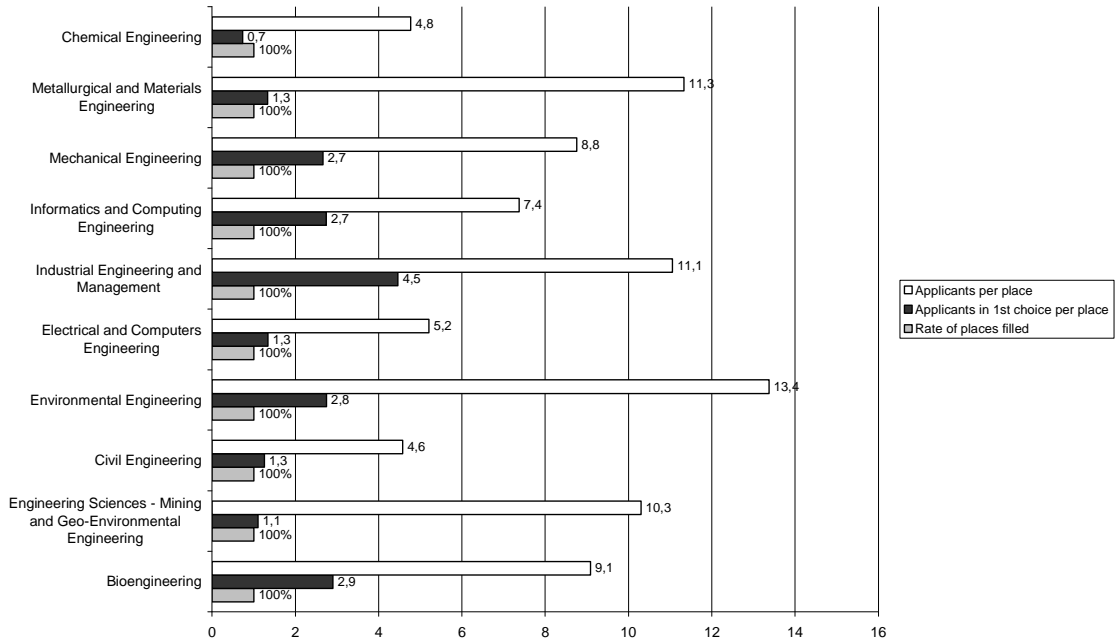


Chart 22: Rate of places filled and course demand for the Faculty of Pharmacy

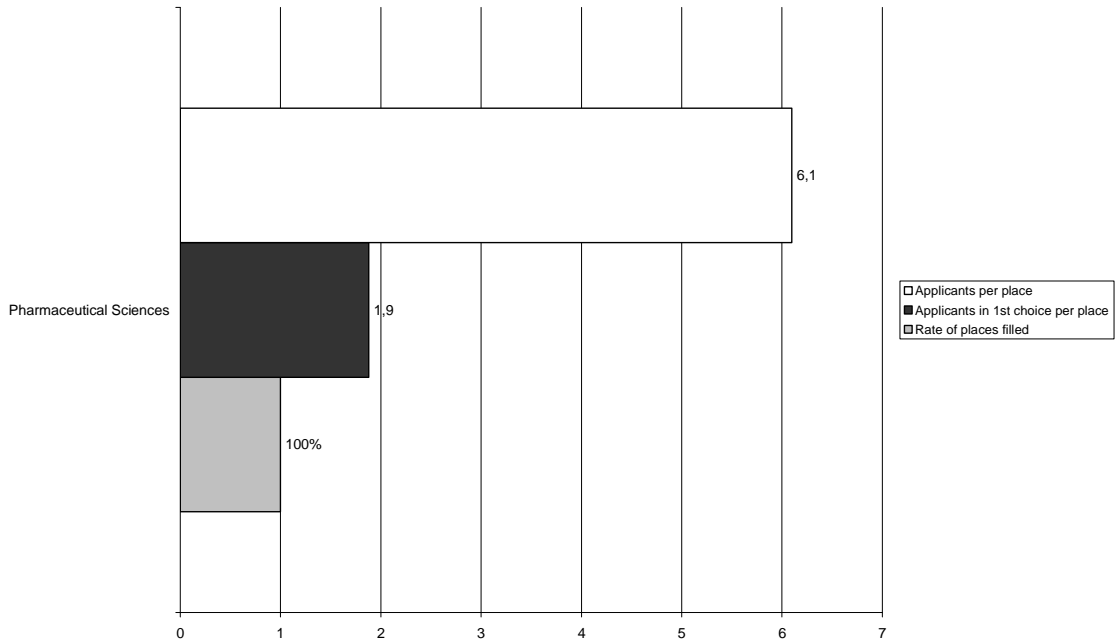


Chart 23: Rate of places filled and course demand for the Faculty of Arts

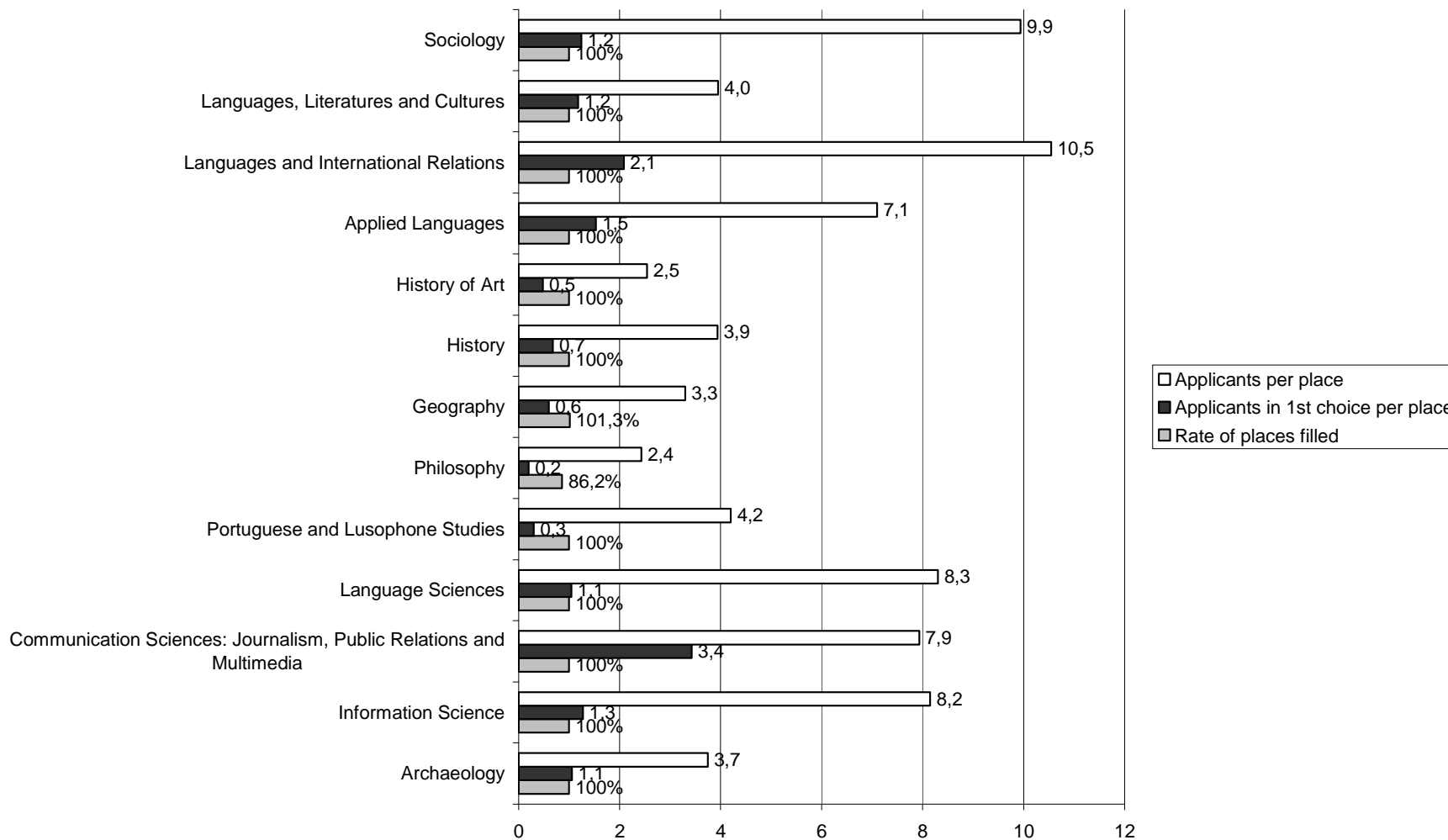


Chart 24: Rate of places filled and course demand for the Faculty of Medicine

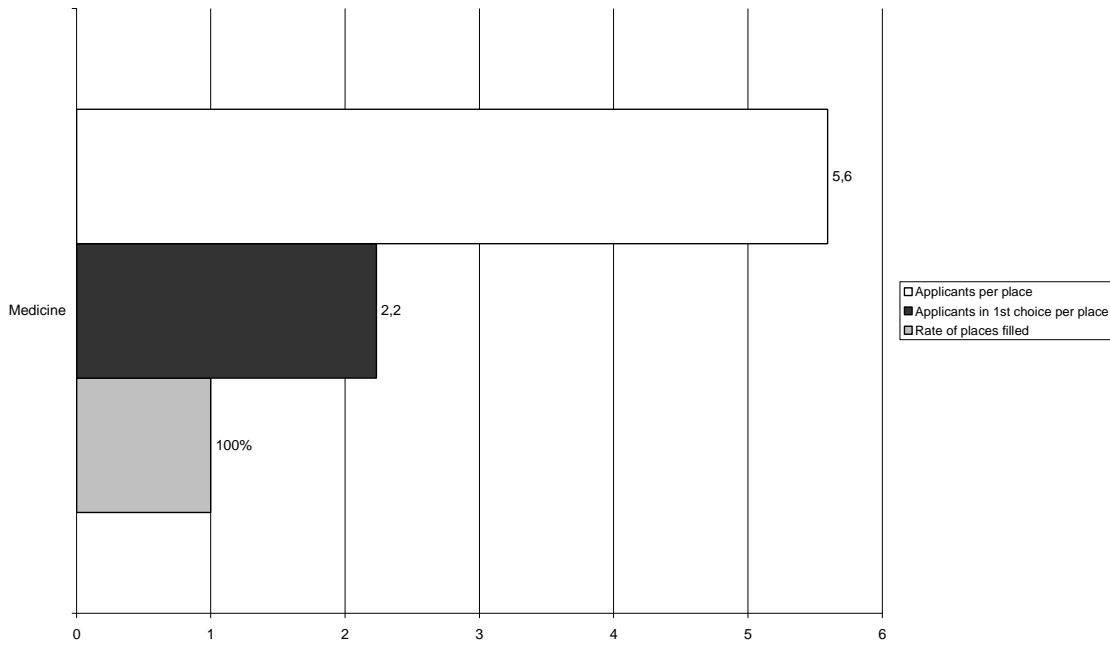


Chart 25: Rate of places filled and course demand for the Faculty of Dental Medicine

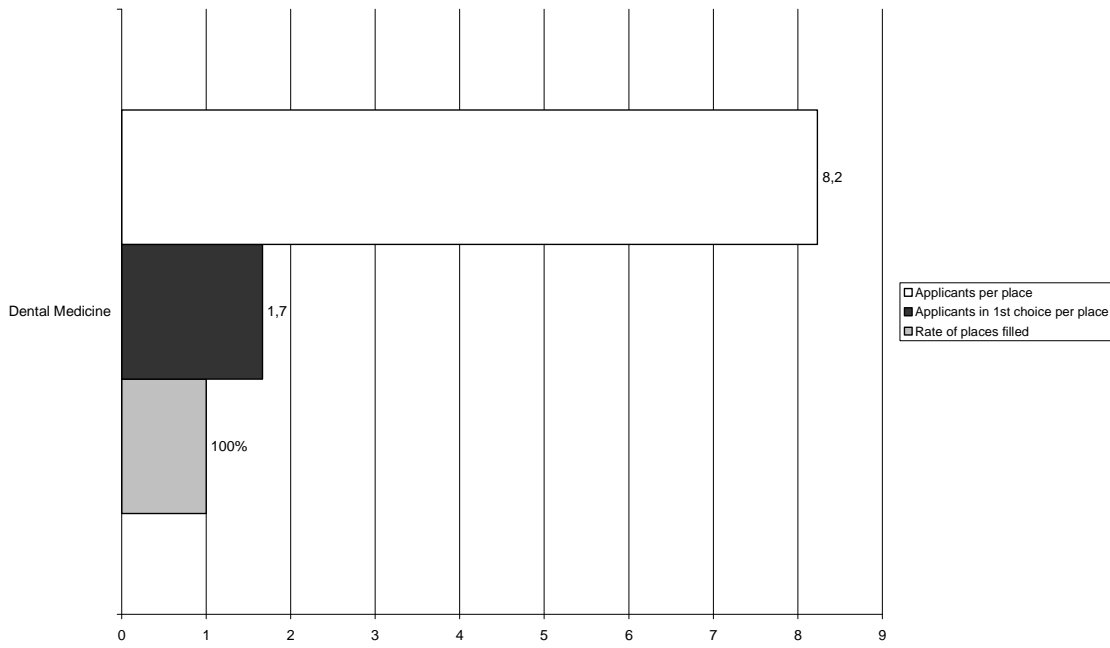


Chart 26: Rate of places filled and course demand for the Faculty of Psychology and Education Science

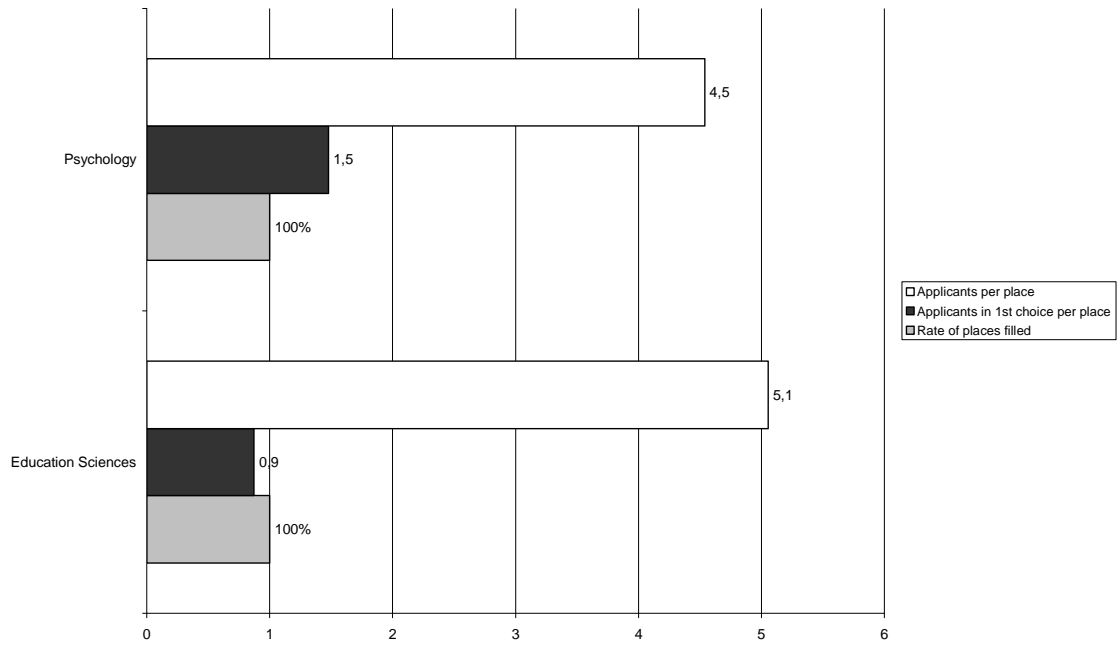
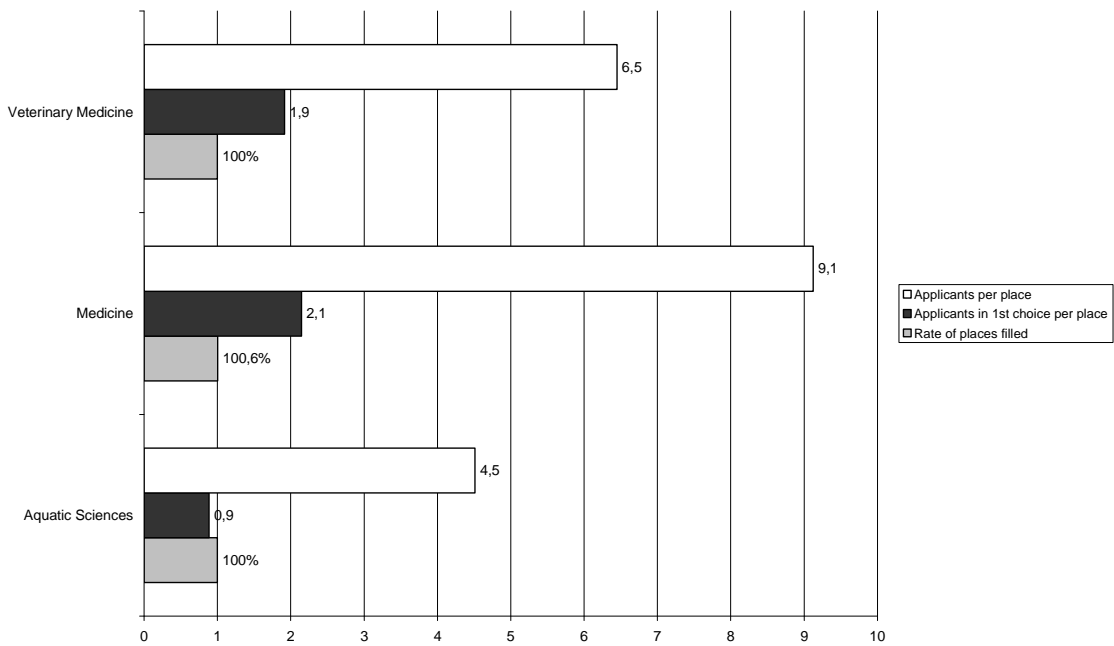


Chart 27: Rate of places filled and course demand for the Institute of Biomedical Sciences Abel Salazar



I.2.3 – The U.Porto as 1st choice

Table 21: Applicants in 1st choice per school district where exams took place

	Total	%	Cumulative %
Porto	4230	60.0%	60.0%
Aveiro	750	10.6%	70.7%
Braga	730	10.4%	81.1%
Viana do Castelo	285	4.0%	85.1%
Viseu	232	3.3%	88.4%
Vila Real	201	2.9%	91.2%
Bragança	109	1.5%	92.8%
Autonomous Region of Madeira	84	1.2%	94.0%
Coimbra	76	1.1%	95.1%
Leiria	58	0.8%	95.9%
Lisboa	49	0.7%	96.6%
Autonomous Region of the Azores	45	0.6%	97.2%
Santarém	44	0.6%	97.8%
Guarda	43	0.6%	98.5%
Faro	23	0.3%	98.8%
Castelo Branco	21	0.3%	99.1%
Setúbal	18	0.3%	99.3%
Overseas	7	0.1%	99.4%
Beja	7	0.1%	99.5%
Portalegre	6	0.1%	99.6%
Évora	5	0.1%	99.7%
blank	22	0.3%	100.0%
U.Porto total	7045	100.0%	

Source: MCTES – DGES BD_U.Porto_08_1F'

Chart 28: Applicants in 1st choice per district in cumulative percentage

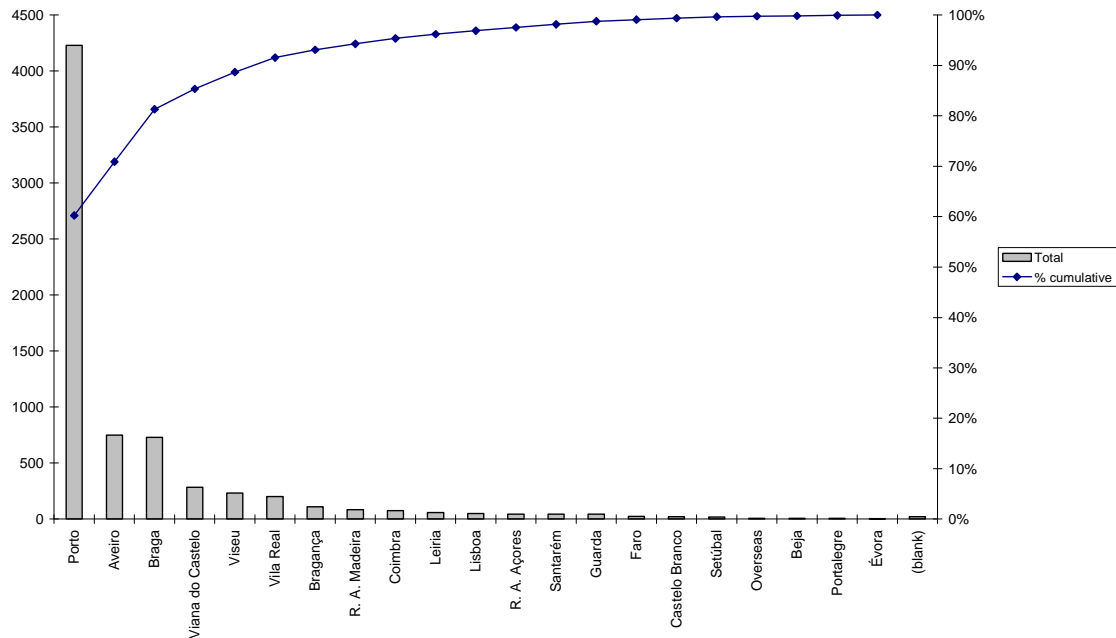


Table 22: Successful applicants in 1st choice per school district where exams took place

	Total		Cumulative %
Porto	1487	59.8%	59.8%
Aveiro	253	10.2%	70.0%
Braga	229	9.2%	79.2%
Viana do Castelo	121	4.9%	84.1%
Viseu	81	3.3%	87.3%
Vila Real	67	2.7%	90.0%
Bragança	45	1.8%	91.8%
Autonomous Region of Madeira	45	1.8%	93.6%
Autonomous Region of the Azores	28	1.1%	94.8%
Coimbra	25	1.0%	95.8%
Leiria	19	0.8%	96.5%
Guarda	17	0.7%	97.2%
Lisboa	15	0.6%	97.8%
Santarém	11	0.4%	98.3%
Castelo Branco	7	0.3%	98.6%
Overseas	6	0.2%	98.8%
Faro	5	0.2%	99.0%
Beja	3	0.1%	99.1%
Setúbal	3	0.1%	99.2%
Portalegre	2	0.1%	99.3%
Évora	1	0.0%	99.4%
(blank)	16	0.6%	100.0%
U.Porto total	2486	100.0%	

Source: MCTES – DGES BD_U.Porto_08_1F

Chart 29: Successful applicants in 1st choice per district in cumulative percentage

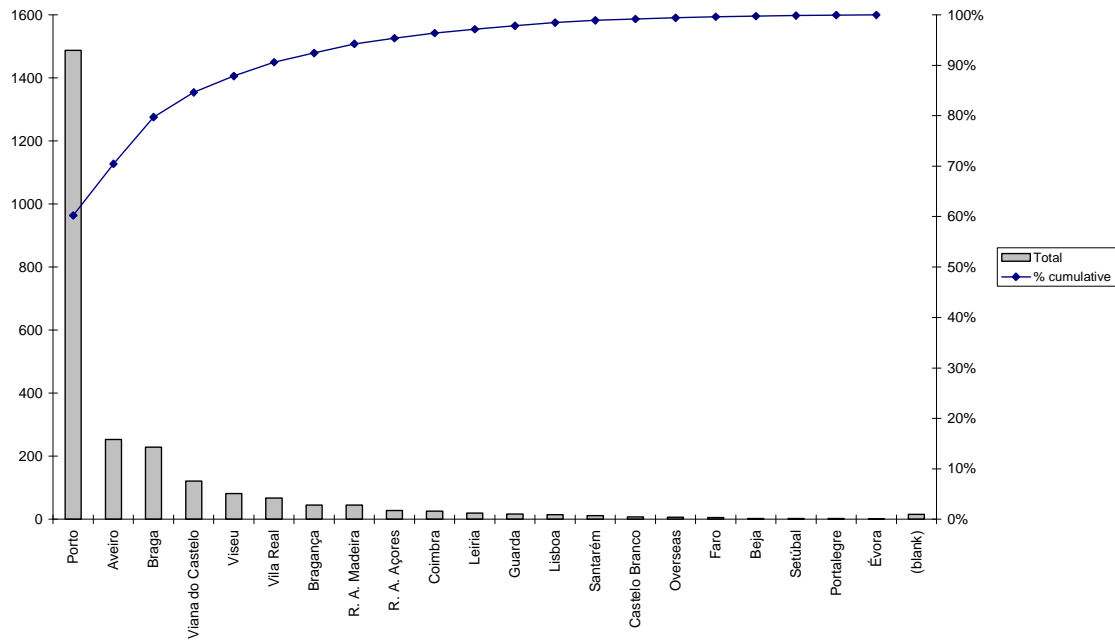


Table 23: Applicants in 1st choice per school where exams took place (top 50)

	Total
Escola Secundária/3 Garcia de Orta	206
Externato Ribadouro	197
Escola Secundária/3 de Almeida Garrett	135
Escola Secundária/3 de Rio Tinto	118
Escola Secundária/3 Aurélia de Sousa	113
Escola Secundária/3 Filipa de Vilhena	110
Colégio Internato dos Carvalhos	110
Escola Secundária/3 da Maia	105
Escola Secundária/3 Alexandre Herculano	101
Escola Secundária/3 de Ermesinde	99
Escola Secundária/3 Augusto Gomes	97
Escola Secundária Eça de Queirós - Póvoa de Varzim	95
Externato D. Duarte	90
Escola Secundária/3 de Penafiel	87
Escola Secundária Alves Martins	83
Escola Secundária/3 Rodrigues de Freitas	76
Colégio Nossa Senhora do Rosário	74
Escola Secundária/3 de Gondomar	74
Escola Secundária Soares dos Reis	73
Escola Secundária de Monserrate	72
Escola Secundária/3 Dr. Manuel Gomes de Almeida	71
Colégio Liceal de Santa Maria de Lamas	68
Escola Secundária/3 de Valongo	68
Escola Secundária/3 António Sérgio	68
Escola Secundária/3 de Águas Santas	67
Escola Secundária/3 da Boa Nova - Leça da Palmeira	65
Escola Secundária/3 Dr. Manuel Laranjeira	63
Escola Secundária/3 Carolina Michaelis	63
Escola Secundária Santa Maria Maior	61
Escola Secundária/3 João Gonçalves Zarco	61
Externato Paulo VI	60
Escola Secundária/3 da Trofa	60
Escola Secundária/3 de Santa Maria da Feira	60
Escola Secundária/3 Francisco de Holanda	59
Escola Secundária/3 de Marco de Canaveses	58
Escola Secundária/3 de Inês de Castro	58
Escola Secundária/3 José Régio	57
Escola Secundária D. Afonso Sanches	54

	Total
Escola Secundária/3 de Paços de Ferreira	53
Colégio Ellen Key	53
Colégio Luso-Francês	53
Escola Secundária/3 António Nobre	52
Escola Secundária/3 de Padrão da Légua	51
Colégio de Gaia	50
Escola Secundária/3 da Senhora da Hora	50
Escola Secundária/3 Alcaides de Faria - Arcozelo	49
Escola Secundária/3 de Amarante	48
Escola Secundária/3 de Felgueiras	47
Escola Secundária/3 Abel Salazar	47
Escola Secundária/3 Henrique Medina	47
Escola Secundária/3 D. Dinis (Santo Tirso)	47
Escola Secundária/3 de Paredes	47

Source: MCTES – DGES BD_U.Porto_08_1F

Table 24: Successful applicants in 1st choice per school where exams took place (top 50)

	Total
Externato Ribadouro	106
Escola Secundária/3 Garcia de Orta	82
Escola Secundária/3 de Almeida Garrett	62
Escola Secundária/3 Aurélia de Sousa	47
Colégio Internato dos Carvalhos	46
Escola Secundária/3 de Rio Tinto	44
Colégio Nossa Senhora do Rosário	43
Escola Secundária Alves Martins	42
Escola Secundária/3 Filipa de Vilhena	40
Escola Secundária/3 Augusto Gomes	38
Escola Secundária/3 da Maia	36
Escola Secundária Eça de Queirós - Póvoa de Varzim	36
Escola Secundária/3 de Ermesinde	34
Escola Secundária/3 Rodrigues de Freitas	30
Escola Secundária Soares dos Reis	28
Colégio Luso-Francês	27
Escola Secundária/3 Dr. Manuel Gomes de Almeida	26
Escola Secundária de Monserrate	26
Escola Secundária/3 Alexandre Herculano	26
Colégio Liceal de Santa Maria de Lamas	26
Escola Secundária/3 Dr. Manuel Laranjeira	24

	Total
Escola Secundária/3 de Santa Maria da Feira	24
Escola Secundária/3 de Penafiel	24
Escola Secundária/3 de Gondomar	24
Escola Secundária/3 António Sérgio	24
Escola Secundária/3 de Águas Santas	24
Externato Paulo VI	23
Escola Secundária/3 João Gonçalves Zarco	23
Escola Secundária/3 da Trofa	23
Escola Secundária Jaime Moniz	21
Escola Secundária/3 Francisco de Holanda	21
Escola Secundária/3 Abel Salazar	20
Escola Secundária/3 Carolina Michaellis	20
Escola Secundária/3 de Marco de Canaveses	20
Escola Secundária/3 Dr. Serafim Leite	19
Escola Secundária Carlos Amarante	19
Escola Secundária Santa Maria Maior	18
Escola Secundária/3 de Valongo	18
Colégio São Gonçalo	18
Escola Secundária/3 D. Dinis (Santo Tirso)	18
Escola Secundária/3 de Paços de Ferreira	17
Escola Secundária/3 da Boa Nova - Leça da Palmeira	17
Escola Secundária/3 de Amarante	17
Escola Secundária/3 D. Sancho I	17
Escola Secundária/3 do Castelo da Maia	17
Colégio de Gaia	16
Escola Secundária/3 de Monção	16
Escola Secundária/3 de Ponte de Lima	16
Equivalences (Article 20-A, item 2)	16
Colégio Ellen Key	16

Source: MCTES - DGES BD_U.Porto_08_1F

Table 25: Applicants and successful applicants in 1st choice per gender and faculty

	Applicants in 1 st choice			Successful applicants in 1 st choice		
	F	M	Total	F	M	Total
Faculty of Architecture	151	133	284	62	51	113
Faculty of Fine Arts	179	96	275	68	31	99
Faculty of Sciences	248	287	535	121	131	252
Faculty of Nutrition and Food Science	139	17	156	22	1	23
Faculty of Sport	87	171	258	38	62	100
Faculty of Law	463	184	647	111	41	152
Faculty of Economics	324	385	709	134	158	292
Faculty of Engineering	401	1253	1654	127	398	525
Faculty of Pharmacy	261	87	348	49	19	68
Faculty of Arts	514	271	785	248	123	371
Faculty of Medicine	368	179	547	131	102	233
Faculty of Dental Medicine	103	47	150	11	6	17
Faculty of Psychology and Education Science	191	27	218	88	13	101
Institute of Biomedical Sciences Abel Salazar	335	144	479	87	53	140
U.Porto total	3764	3281	7045	1297	1189	2486
	53%	47%		52%	48%	

Source: MCTES – DGES BD_U.Porto_08_1F

Chart 30: Applicants in 1st choice per gender and faculty in percentage

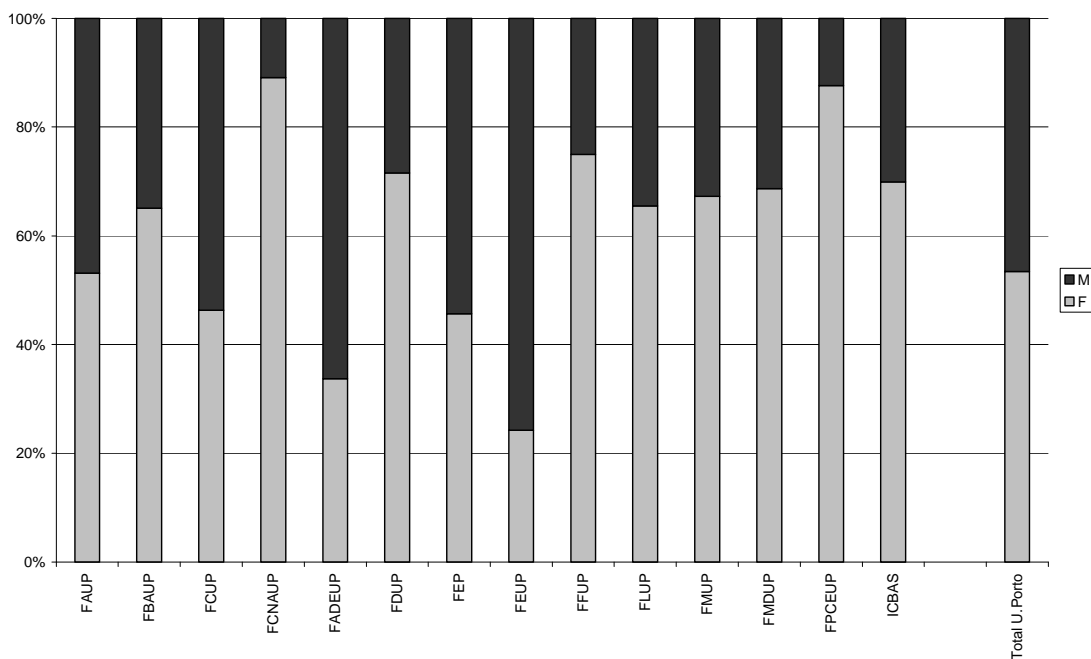


Chart 31: Successful applicants in 1st choice per gender and faculty in percentage

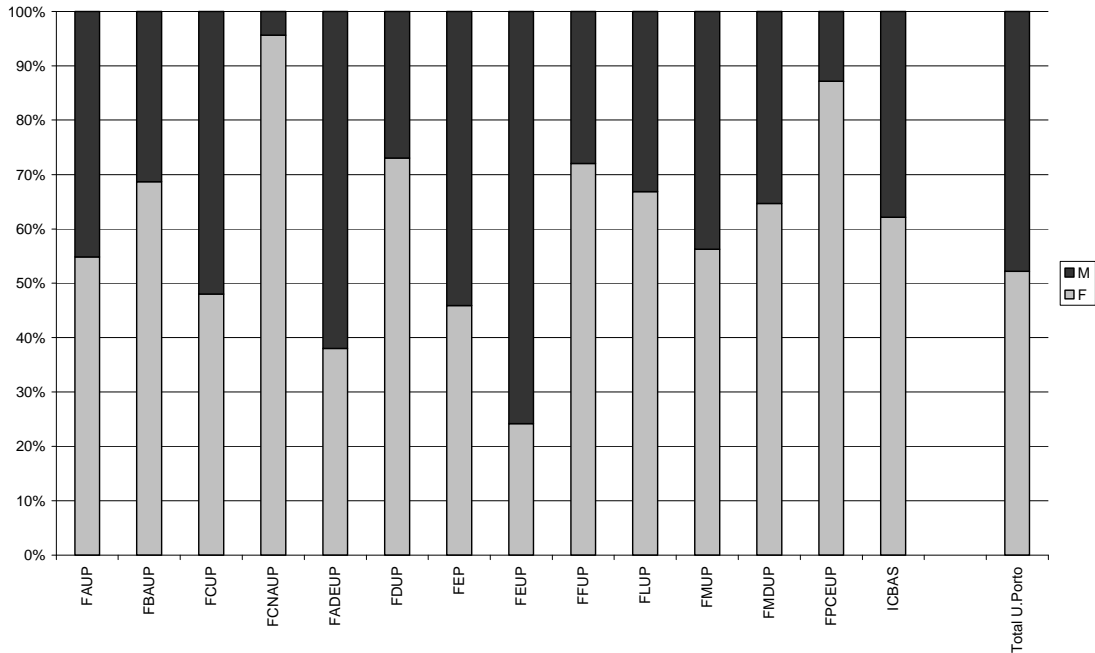


Table 26: Applicants in 1st choice – successful and unsuccessful, per course

	Places	Successful applicants	Rate of places filled	Successful applicants 1 st choice	%	1 st choice Unsuccessful	%
	(1)	(2)	(2)/(1)	(3)	(3)/(2)	(4)	(4)/(1)
Faculty of Architecture	120	120	100%	113	94%	171	143%
Architecture	120	120	100%	113	94%	171	143%
Faculty of Fine Arts	140	140	100%	99	71%	176	126%
Plastic Arts	90	90	100%	58	64%	78	87%
Communication Design	50	50	100%	41	82%	98	196%
Faculty of Sciences	665	657	98.8%	252	38%	283	43%
Landscape Architecture	25	25	100%	15	60%	29	116%
Astronomy	20	20	100%	12	60%	1	5%
Biology	130	130	100%	51	39%	63	48%
Biochemistry	70	70	100%	22	31%	59	84%
Computer Science	40	40	100%	15	38%	19	48%
Engineering Sciences	45	45	100%	17	38%	16	36%
Environmental Sciences and Technology	40	40	100%	12	30%	25	63%
Network Engineering and IT Systems	70	70	100%	22	31%	54	77%
Physical Engineering	25	25	100%	15	60%	6	24%
Physics	30	22	73.3%	13	59%	0	0%
Geology	30	30	100%	12	40%	11	37%
Mathematics	50	50	100%	28	56%	0	0%
Chemistry	90	90	100%	18	20%	0	0%

	Places	Successful applicants	Rate of places filled	Successful applicants 1 st choice	%	1 st choice Unsuccessful	%
	(1)	(2)	(2)/(1)	(3)	(3)/(2)	(4)	(4)/(1)
Faculty of Nutrition and Food Science	65	65	100%	23	35%	133	205%
Nutrition Sciences	65	65	100%	23	35%	133	205%
Faculty of Sport	110	110	100%	100	91%	158	144%
Sports Sciences	110	110	100%	100	91%	158	144%
Faculty of Law	175	175	100%	152	87%	495	283%
Criminology	35	35	100%	28	80%	226	646%
Law	140	140	100%	124	89%	269	192%
Faculty of Economics	330	330	100%	292	88%	417	126%
Economics	216	216	100%	205	95%	215	100%
Management	114	114	100%	87	76%	202	177%
Faculty of Engineering	830	830	100%	525	63%	1129	136%
Bioengineering	60	60	100%	38	63%	136	227%
Engineering Sciences - Mining and Geo-Environmental Engineering	10	10	100%	0	0%	11	110%
Civil Engineering	175	175	100%	114	65%	106	61%
Environmental Engineering	40	40	100%	18	45%	92	230%
Electrical and Computers Engineering	195	195	100%	128	66%	134	69%
Industrial Engineering and Management	50	50	100%	40	80%	183	366%
Informatics and Computing Engineering	102	102	100%	88	86%	192	188%
Mechanical Engineering	112	112	100%	72	64%	226	202%
Metallurgical and Materials Engineering	21	21	100%	4	19%	24	114%
Chemical Engineering	65	65	100%	23	35%	25	38%
Faculty of Pharmacy	185	185	100%	68	37%	280	151%
Pharmaceutical Sciences	185	185	100%	68	37%	280	151%
Faculty of Arts	650	642	98.8%	371	58%	414	64%
Archaeology	35	35	100%	26	74%	11	31%
Information Science	40	40	100%	17	43%	34	85%
Communication Sciences: Journalism, Public Relations and Multimedia	75	75	100%	68	91%	189	252%
Language Sciences	20	20	100%	8	40%	13	65%
Portuguese and Lusophone Studies	20	20	100%	6	30%	0	0%
Philosophy	65	56	86.2%	13	23%	0	0%
Geography	80	81	101.3%	41	51%	7	9%
History	80	80	100%	42	53%	12	15%
History of Art	35	35	100%	17	49%	0	0%
Applied Languages	30	30	100%	24	80%	22	73%

	Places	Successful applicants	Rate of places filled	Successful applicants 1 st choice	%	1 st choice Unsuccessful	%
	(1)	(2)	(2)/(1)	(3)	(3)/(2)	(4)	(4)/(1)
Languages and International Relations	35	35	100%	30	86%	43	123%
Languages, Literatures and Cultures	85	85	100%	59	69%	41	48%
Sociology	50	50	100%	20	40%	42	84%
Faculty of Medicine	245	245	100%	233	95%	314	128%
Medicine	245	245	100%	233	95%	314	128%
Faculty of Dental Medicine	90	90	100%	17	19%	133	148%
Dental Medicine	90	90	100%	17	19%	133	148%
Faculty of Psychology and Education Science	170	170	100%	101	59%	117	69%
Education Sciences	55	55	100%	21	38%	27	49%
Psychology	115	115	100%	80	70%	90	78%
Institute of Biomedical Sciences Abel Salazar	250	251	100%	140	56%	339	136%
Aquatic Sciences	35	35	100%	14	40%	17	49%
Medicine	155	156	100.6%	102	65%	231	149%
Veterinary Medicine	60	60	100%	24	40%	91	152%
U.Porto total	4025	4010	99.6%	2486	62%	4559	113%

Source: MCTES – DGES BD_U.Porto_08_1F

Table 27: Applicants in 1st choice – successful and unsuccessful, per faculty: comparative analysis 2007-2008

	2008		2007	
	% Successful applicants 1 st choice	% 1 st choice not admitted	% Successful applicants 1 st choice	% 1 st choice not admitted
Faculty of Architecture	94%	143%	97%	269%
Faculty of Fine Arts	71%	126%	56%	198%
Faculty of Sciences	38%	43%	42%	48%
Faculty of Nutrition and Food Science	35%	205%	33%	88%
Faculty of Sport	91%	144%	87%	295%
Faculty of Law	87%	283%	91%	238%
Faculty of Economics	88%	126%	92%	86%
Faculty of Engineering	63%	136%	62%	126%
Faculty of Pharmacy	37%	151%	35%	106%
Faculty of Arts	58%	64%	58%	55%
Faculty of Medicine	95%	128%	90%	275%
Faculty of Dental Medicine	19%	148%	4%	68%
Faculty of Psychology and Education Science	59%	69%	53%	148%
Institute of Biomedical Sciences Abel Salazar	56%	136%	53%	129%
U.Porto total	62%	113%	61%	121%

Sources: MCTES – DGES BD_U.Porto_08_1F and MCTES – DGES A07_1F

Chart 32: Successful applicants in 1st choice per faculty: comparative analysis 2007-2008

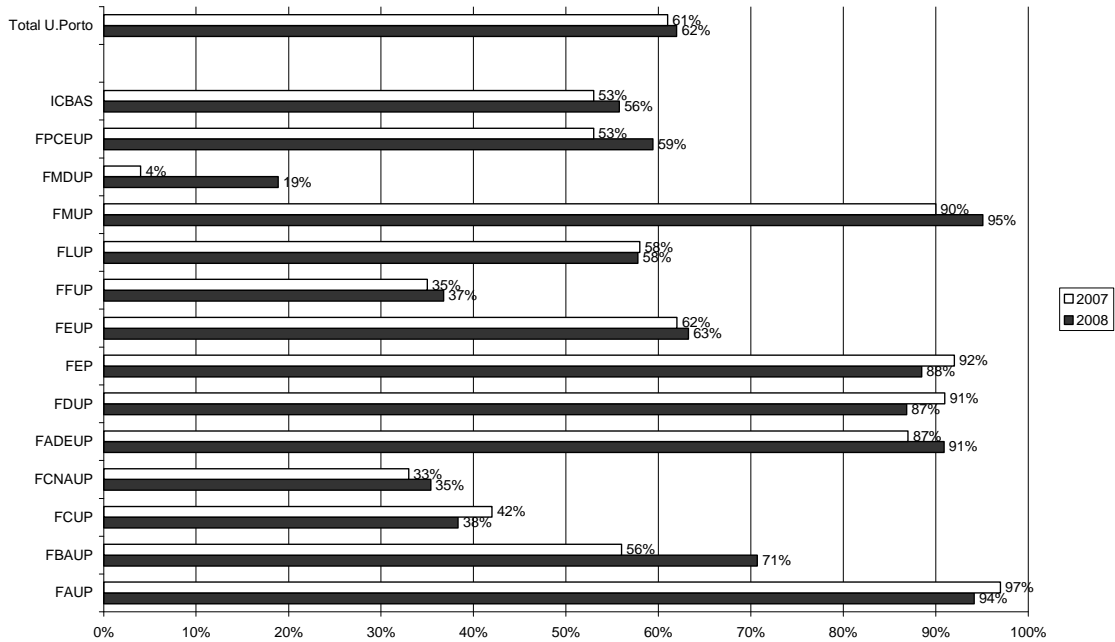


Chart 33: Applicants in 1st choice but unsuccessful due to places available, per faculty: comparative analysis 2007-2008

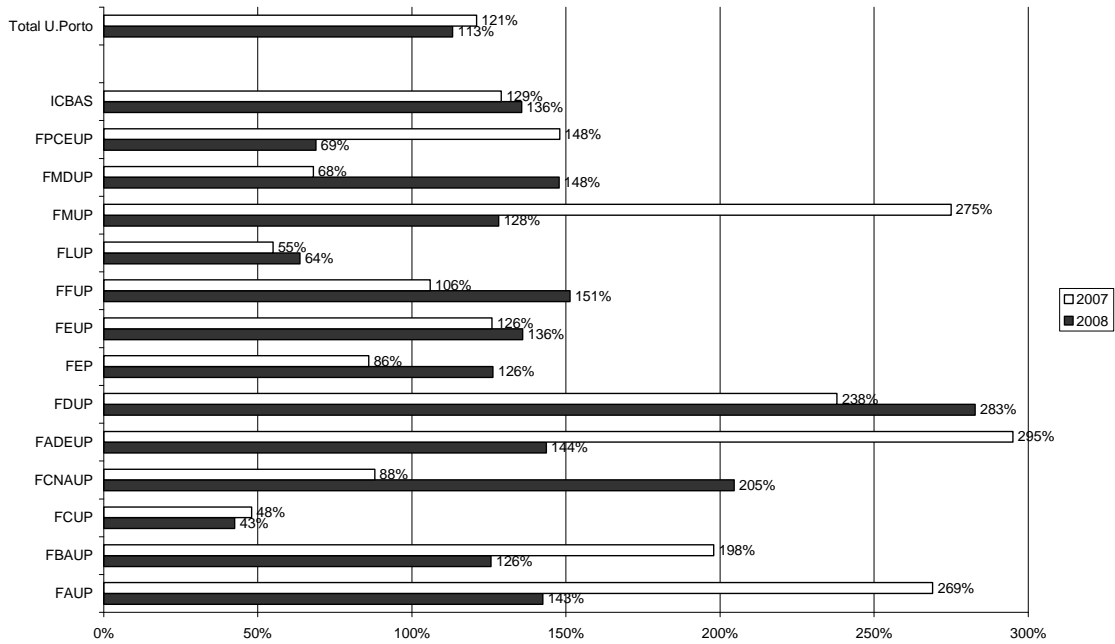


Chart 34: Course in the Faculty of Architecture as 1st choice

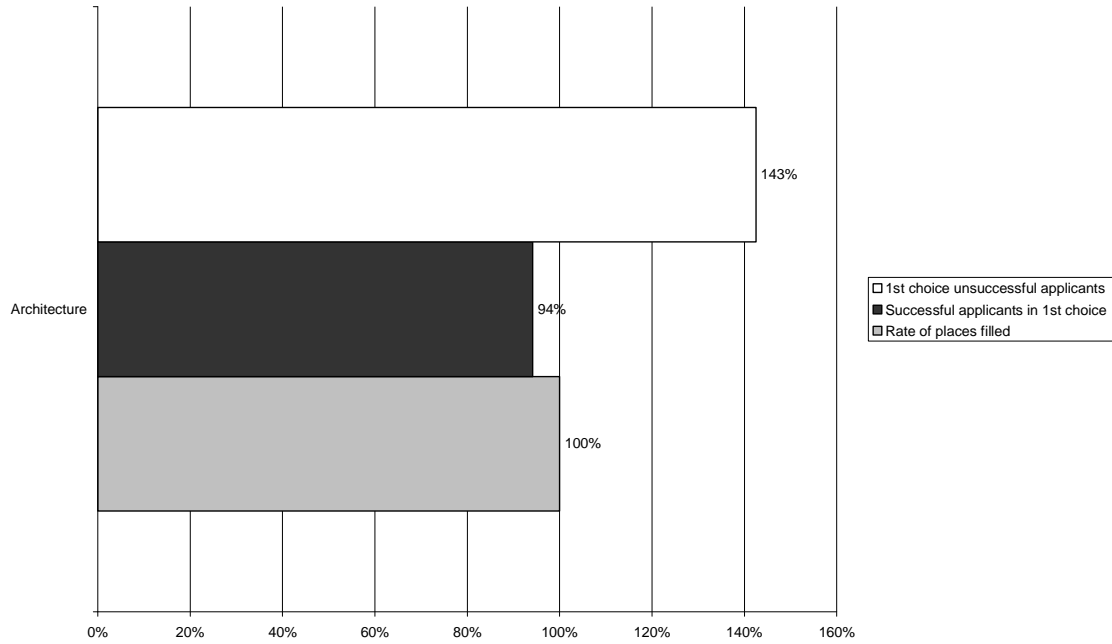


Chart 35: Courses in the Faculty of Fine Arts as 1st choice

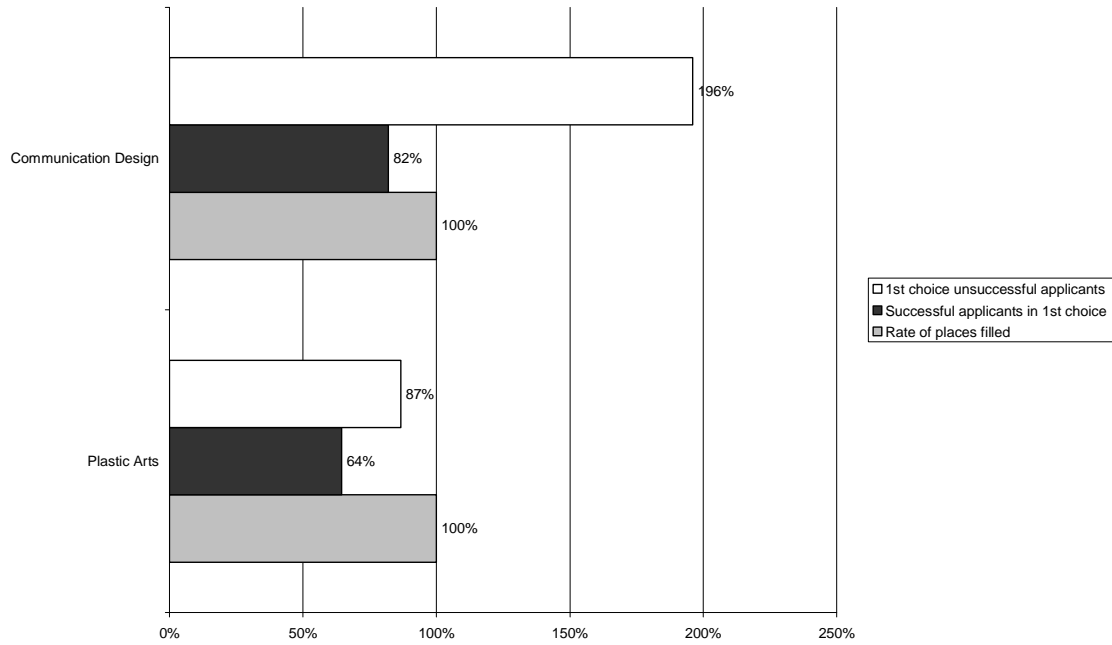


Chart 36: Courses in the Faculty of Sciences as 1st choice

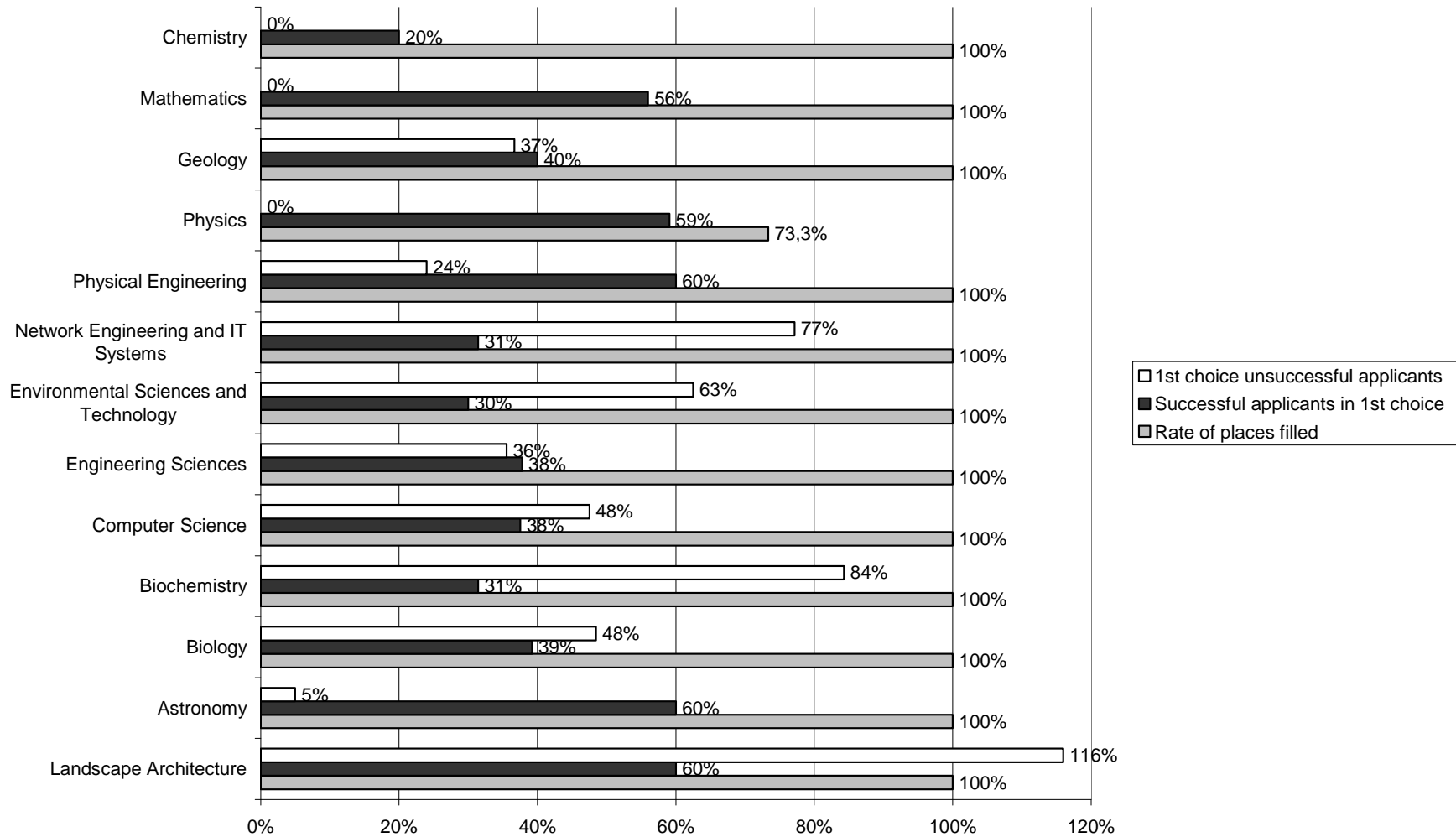


Chart 37: Course in the Faculty of Nutrition and Food Science as 1st choice

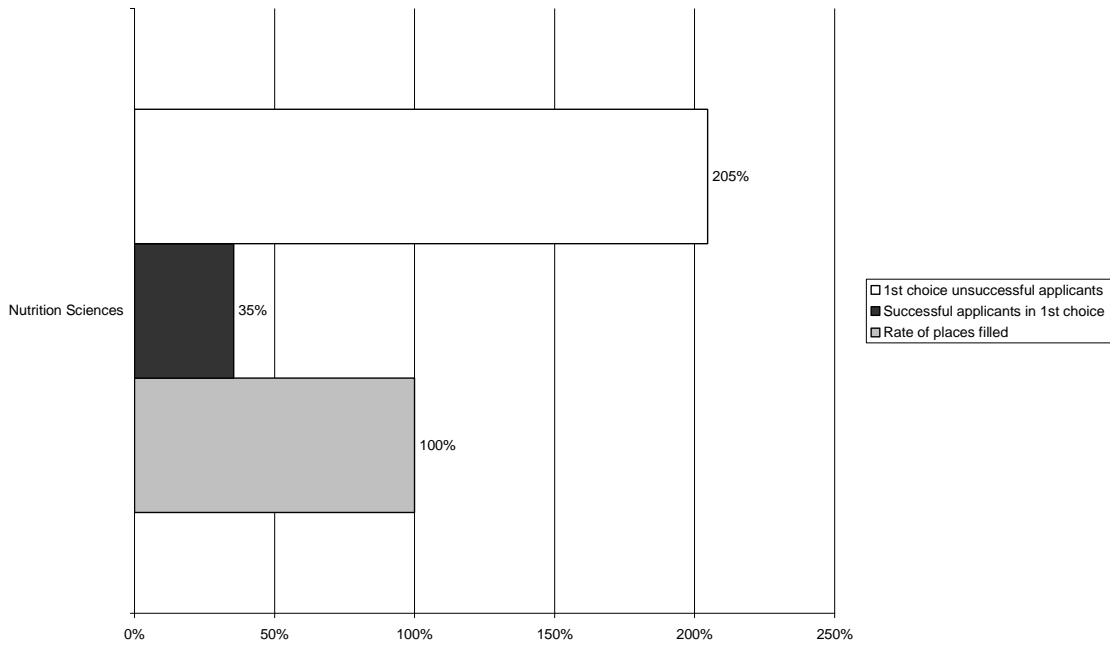


Chart 38: Course in the Faculty of Sport as 1st choice

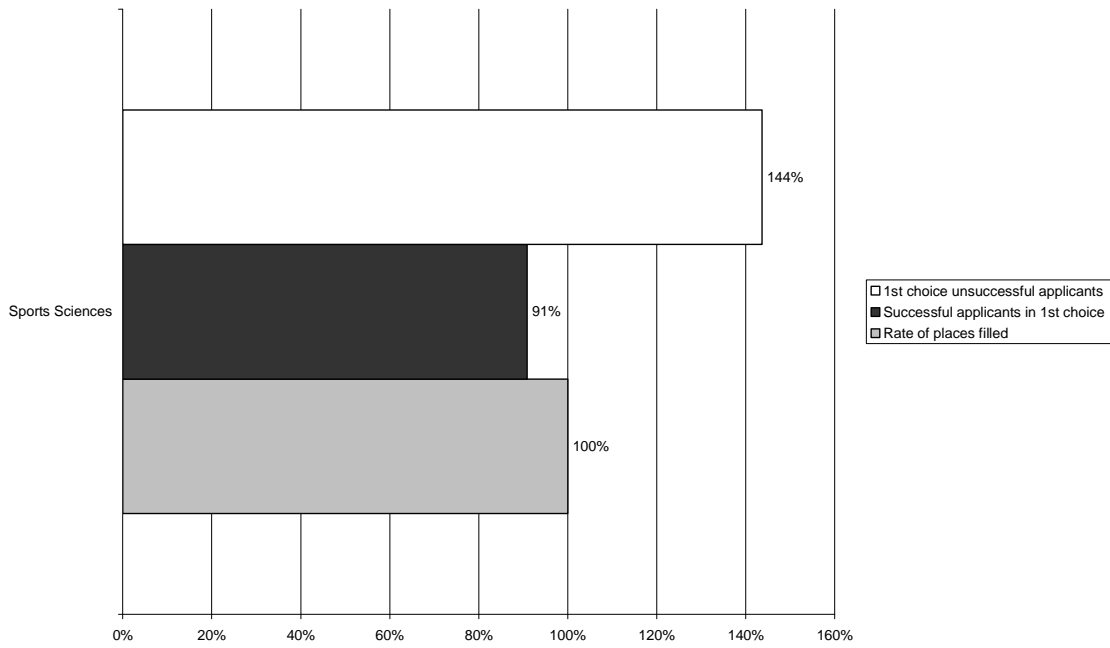


Chart 39: Courses in the Faculty of Law as 1st choice

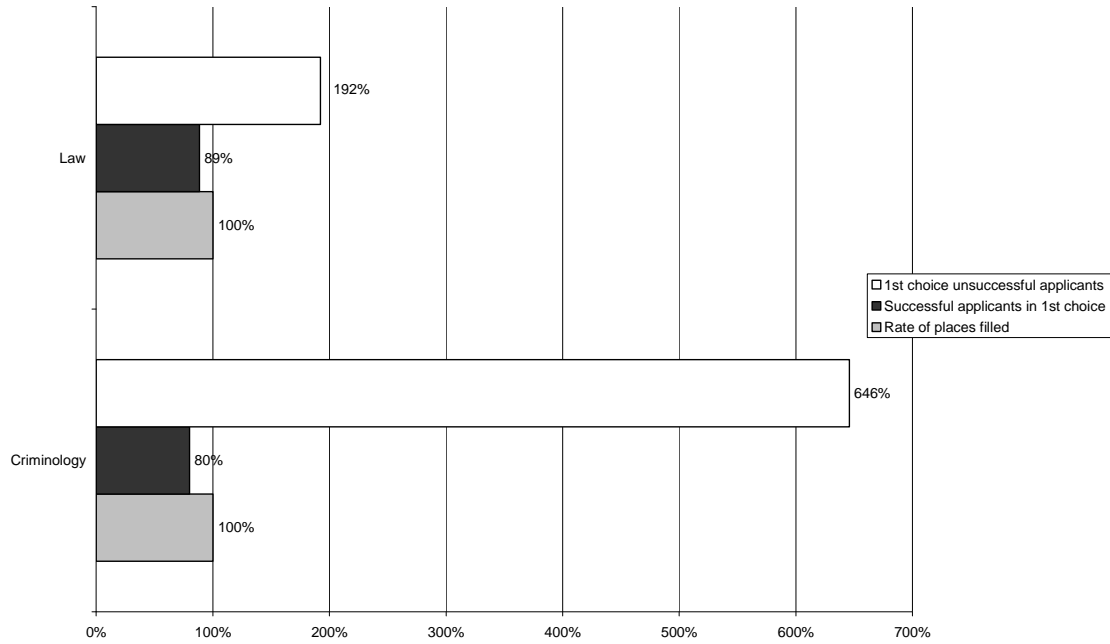


Chart 40: Courses in the Faculty of Economics as 1st choice

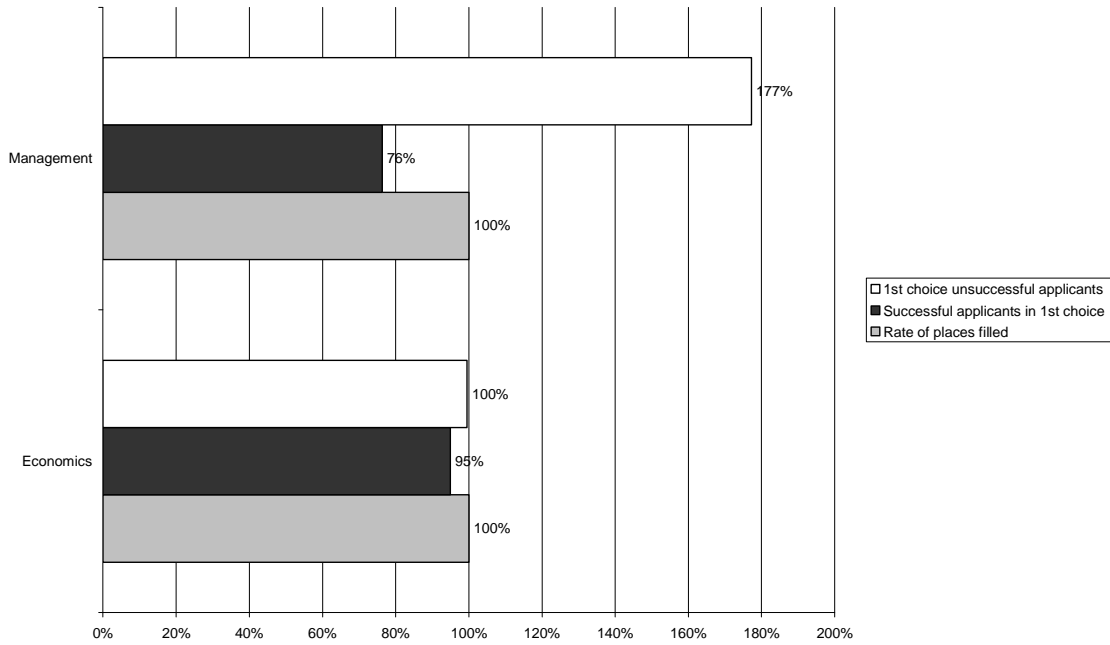


Chart 41: Courses in the Faculty of Engineering as 1st choice

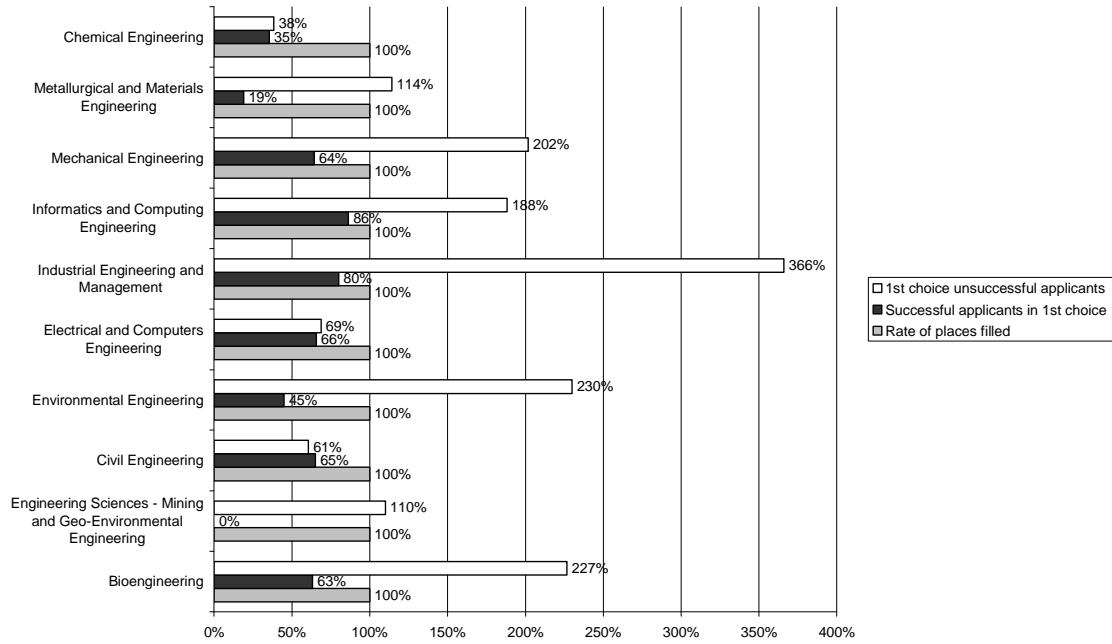


Chart 42: Course in the Faculty of Pharmacy as 1st choice

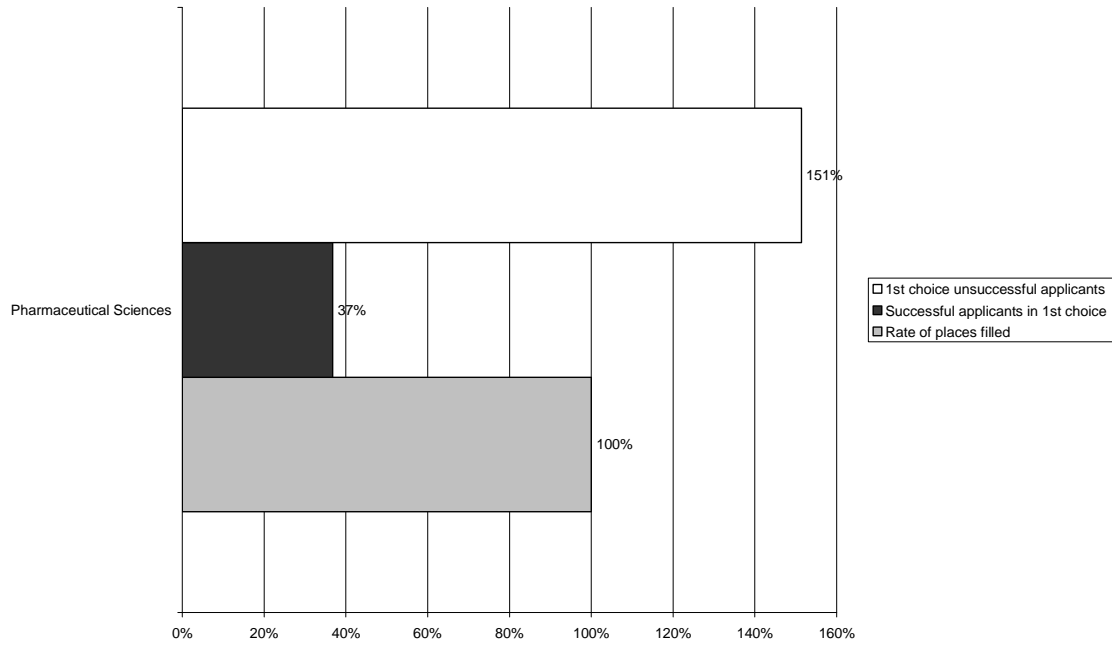


Chart 43: Courses in the Faculty of Arts as 1st choice

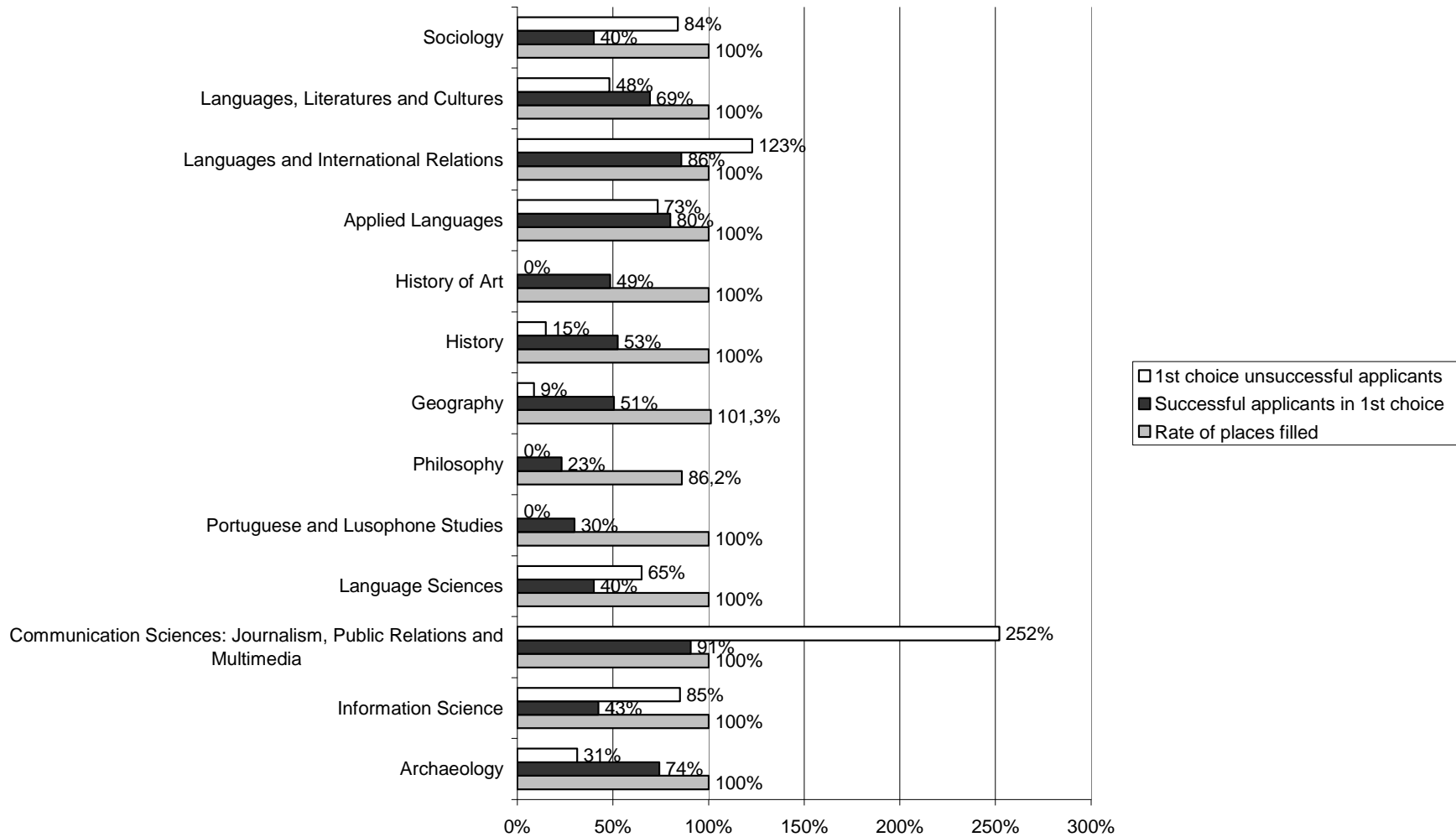


Chart 44: Course in the Faculty of Medicine as 1st choice

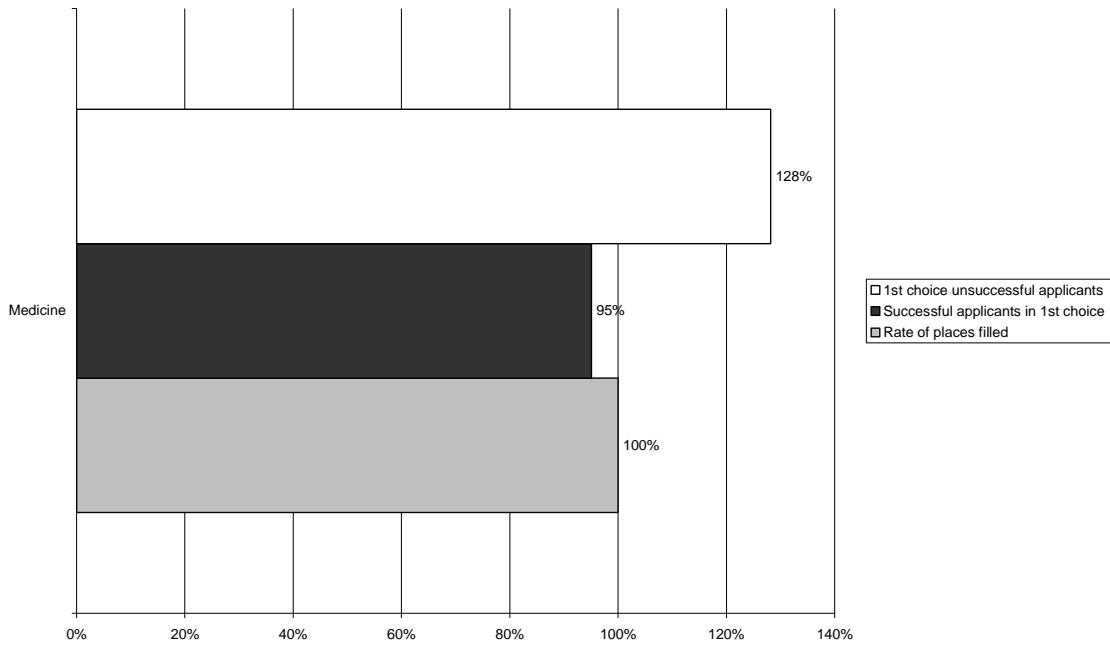


Chart 45: Course in the Faculty of Dental Medicine as 1st choice

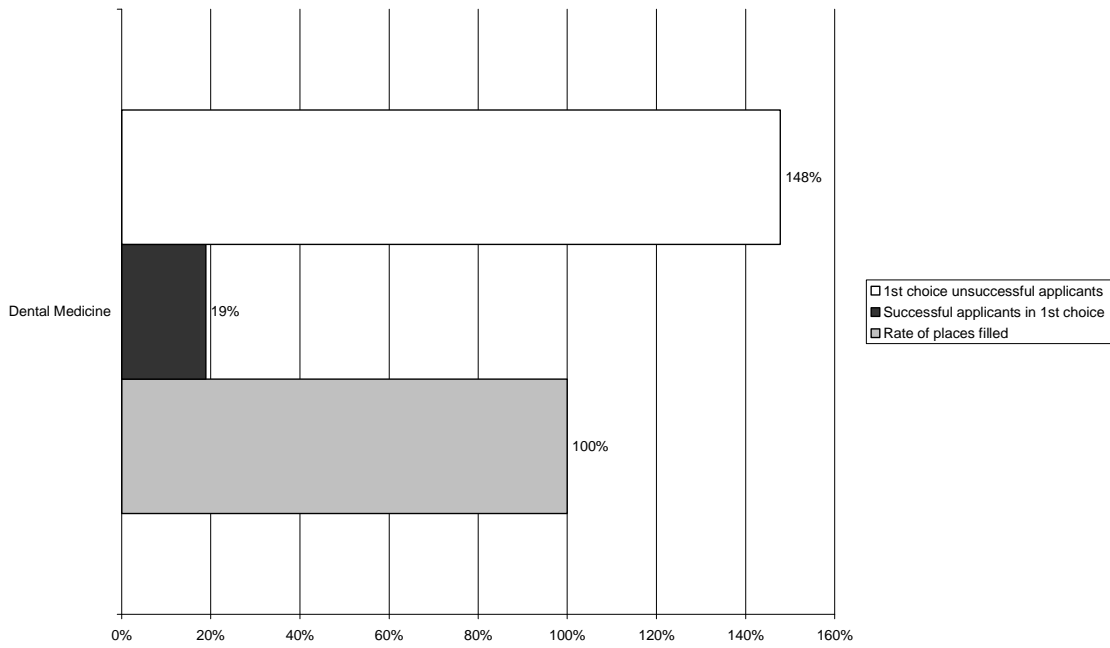


Chart 46: Courses in the Faculty of Psychology and Education Science as 1st choice

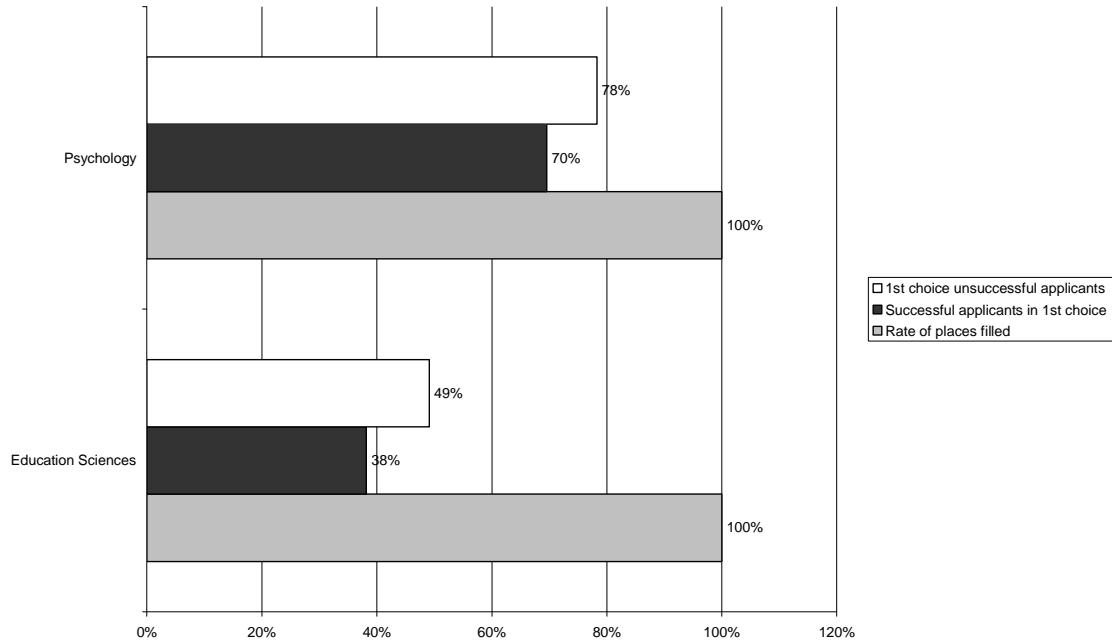
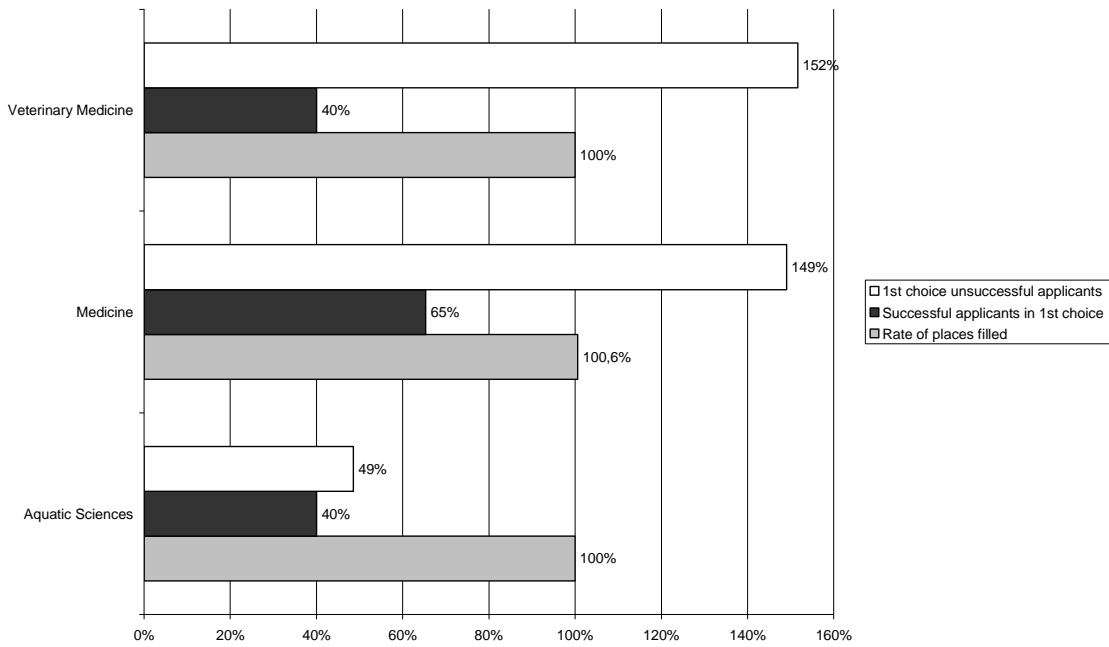


Chart 47: Courses in the Institute of Biomedical Sciences Abel Salazar as 1st choice



Chap. II – 1st and 2nd rounds of the National Competition for University Admission: summary

II.1. National overview

Table 28: List sorted by rate of places filled: comparative analysis 2007-2008

	2008			2007		
	Final Places	Successful and enrolled	%	Final Places	Successful and enrolled	%
	(1)	(2)	(2)/(1)	(3)	(4)	(4)/(3)
Higher Institute of Business and Labour Sciences	970	970	100.0%	936	937	100.1%
University of Porto	4205	4200	99.9%	4106	4109	100.1%
Technical University of Lisbon	3246	3240	99.8%	3237	3151	97.3%
University of Minho *	2441	2436	99.8%	2449	2370	96.8%
New University of Lisbon	2611	2595	99.4%	2518	2506	99.5%
University of Madeira *	585	580	99.1%	555	555	100.0%
University of Trás-os-Montes and Alto Douro *	1408	1392	98.9%	1373	1329	96.8%
University of Aveiro *	2039	2014	98.8%	2027	2014	99.4%
University of Coimbra	3315	3254	98.2%	3146	3111	98.9%
University of Évora *	1048	1018	97.1%	1055	1001	94.9%
University of Azores *	657	637	97.0%	635	560	88.2%
University of Beira Interior	1301	1233	94.8%	1276	1202	94.2%
University of Algarve *	1755	1648	93.9%	1756	1631	92.9%
University of Lisbon	3676	3428	93.3%	3626	3327	91.8%

Notes:

(1) and (3) Final places = initial places + surplus places from special competitions

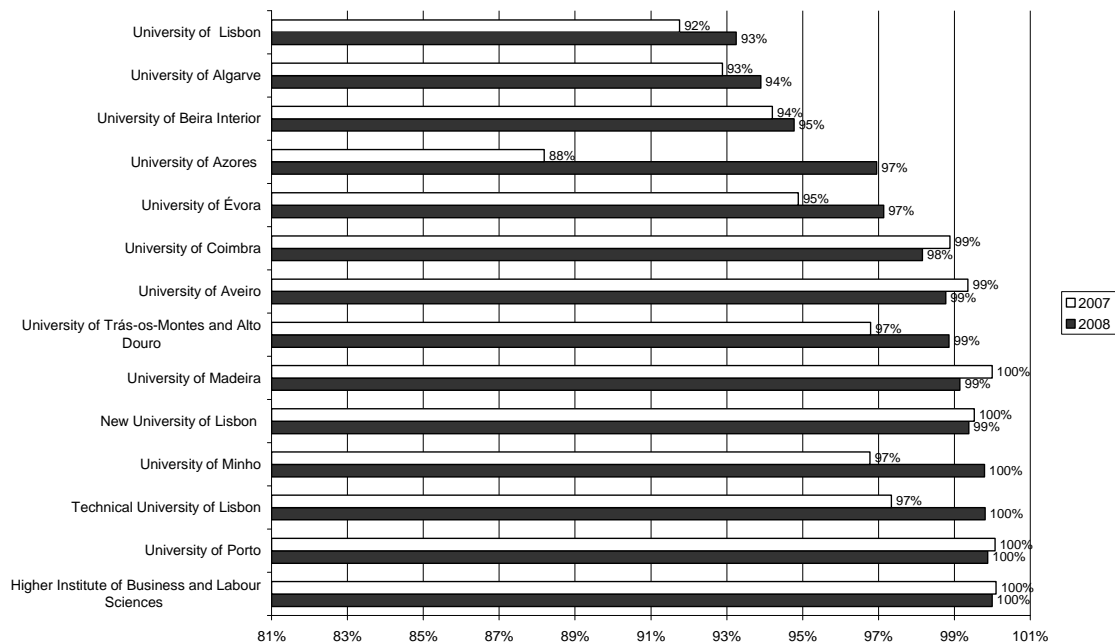
(2) Successful applicants in the 1st round, who enrolled and those who were successful in the 2nd round prior to enrolments

(4) Successful applicants in the 1st and 2nd rounds who completed enrolment

* Includes course(s) in the polytechnic higher education

Source: MCTES - GM_08_n2

Chart 48: Rate of places filled: comparative analysis 2007-2008



II.2. University of Porto

The numbers shown in table 29 are slightly different from those in table 28, the reason being that in the calculation for both rounds, the formulae used for the total number of places in competition and the number of successful applicants are not identical.

Table 29: Rate of places filled and classification of last qualifying applicant per course (1st and 2nd rounds)

	Total no. of places	Total no. of Successful applicants	Rate of places filled	Minimum classification 1 st round	Minimum classification 2 nd round
	(1)	(2)	(2)/(1)		
Faculty of Architecture	120	120	100%	180.0	179.5
Architecture	120	120	100%	180	179.5
Faculty of Fine Arts	142	142	100%	160.0*	158.8*
Plastic Arts	92	92	100%	153	152.5
Communication Design	50	50	100%	172.5	167.5
Faculty of Sciences	732	732	100%	135.6*	130.8*
Landscape Architecture	25	25	100%	140	136.5
Astronomy	25	25	100%	127	122.5
Biology	145	145	100%	144	132.5
Biochemistry	71	71	100%	161	159
Computer Science	42	42	100%	134	138
Engineering Sciences	50	50	100%	133.5	133.5
Environmental Sciences and Technology	55	55	100%	141.2	132.4
Network Engineering and IT Systems	70	70	100%	140.5	144.5
Physical Engineering	28	28	100%	137.5	141
Physics	32	32	100%	116.5	130.5
Geology	33	33	100%	126.5	121.5
Mathematics	62	62	100%	128	121.5
Chemistry	94	94	100%	111.5	118.5
Faculty of Nutrition and Food Science	65	65	100%	161.3	168.5
Nutrition Sciences	65	65	100%	161.3	168.5
Faculty of Sport	155	155	100%	141.5	159.5
Sports Sciences	155	155	100%	141.5	159.5
Faculty of Law	175	175	100%	165.7*	166.6*
Criminology	35	35	100%	174	176.6
Law	140	140	100%	163.6	163.8
Faculty of Economics	345	345	100%	161.3*	157.7*
Economics	226	226	100%	162.3	158.3
Management	119	119	100%	159.5	157

	Total no. of places	Total no. of Successful applicants	Rate of places filled	Minimum classification 1 st round	Minimum classification 2 nd round
	(1)	(2)	(2)/(1)		
Faculty of Engineering	902	902	100%	156.5*	149.7*
Bioengineering	62	62	100%	180.5	180.5
Engineering Sciences - Mining and Geo-Environmental Engineering	11	11	100%	142	141.8
Civil Engineering	181	181	100%	149.5	145
Environmental Engineering	43	43	100%	154.8	145.3
Electrical and Computers Engineering	218	218	100%	151.8	148
Industrial Engineering and Management	55	55	100%	176.3	175.5
Informatics and Computing Engineering	106	106	100%	161.8	157.5
Mechanical Engineering	133	133	100%	162.8	154
Metallurgical and Materials Engineering	24	24	100%	149	143.3
Chemical Engineering	69	69	100%	138.3	135
Faculty of Pharmacy	186	186	100%	166.3	166.3
Pharmaceutical Sciences	186	186	100%	166.3	166.3
Faculty of Arts	656	655	99.8%	134.6*	133.3*
Archaeology	36	36	100%	125.6	122
Information Science	40	40	100%	142	144.2
Communication Sciences: Journalism, Public Relations and Multimedia	75	75	100%	160	167.4
Language Sciences	21	21	100%	133.2	139.4
Portuguese and Lusophone Studies	21	21	100%	119.2	125.8
Philosophy	65	65	100%	105.8	128.6
Geography	81	81	100%	119	124
History	80	80	100%	122	130
History of Art	36	35	97%	118.8	113.4
Applied Languages	30	30	100%	156.8	156.4
Languages and International Relations	35	35	100%	160.4	160.4
Languages, Literatures and Cultures	86	86	100%	146.4	140.2
Sociology	50	50	100%	141.2	142
Faculty of Medicine	246	246	100%	185.2	187.3
Medicine	246	246	100%	185.2	187.3
Faculty of Dental Medicine	92	92	100%	173.3	173.5
Dental Medicine	92	92	100%	173.3	173.5
Faculty of Psychology and Education Science	170	170	100%	146.8*	147.8*
Education Sciences	55	55	100%	136	144.5
Psychology	115	115	100%	152	152

	Total no. of places	Total no. of Successful applicants	Rate of places filled	Minimum classification 1 st round	Minimum classification 2 nd round
	(1)	(2)	(2)/(1)		
Institute of Biomedical Sciences Abel Salazar	262	262	100%	175.5*	152.6*
Aquatic Sciences	36	36	100%	142.5	126
Medicine	156	156	100%	183.7	--
Veterinary Medicine	70	70	100%	173.5	173
U.Porto total	4248	4247	100%	154.2*	143.5*

Notes:

(1) Total places = places in 1st round + places in 2nd round + surplus places in special competitions – balance 2nd round
 places in 2nd round = surplus places in 1st round + surplus places in special competitions + places filled in 1st round where no enrolment was made + additional places leftover after claim processes – additional places created due to ties – additional places filled in after claim processes + places presented after issuance of public notice. If the number is negative, it becomes zero. If the number is less or equal to zero, but there are surplus places from the 1st round, it becomes 1.
 balance 2nd round = surplus places from the 1st round + surplus places from the special competitions + places filled in the 1st round where no enrolment was made + additional places freed after the claim processes – additional places filled in by ties – additional places filled in after claim processes.

(2) Total no. of successful applicants = successful applicants in the 1st round + successful applicants in the 1st round in additional vacancy + successful applicants after claim processes – new placements after claim processes – successful applicants who did not complete enrolment and registration + successful applicants in 2nd round – new placements in the 2nd round

* Average classification that would be obtained if all applicants admitted in each course had a classification equal to the classification of the last qualifying applicant placed (in the 1st round, in the general group). Weighting factor: no. of successful applicants to each course.

Source: MCTES – DGES BD_U.Porto_08_1_2

Chart 49: Rate of places filled per faculty: comparative analysis 2007-2008

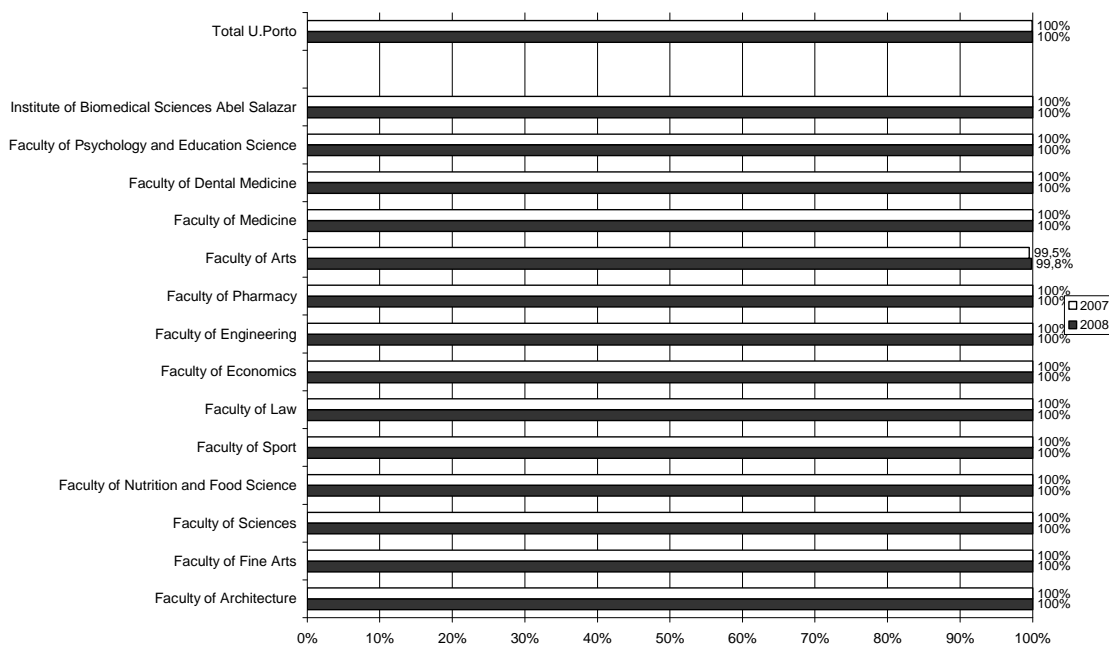


Table 30: Proportion of successful applicants in the 1st round but who did not complete the enrolment or were placed again in the 2nd round, per course

	Placed 1 st round	Not enrolled	New placements	Total	%
	(1)	(2)	(3)	(2)+(3)	(2)+(3)/(1)
Faculty of Architecture	120	5	4	9	8%
Architecture	120	5	4	9	8%
Faculty of Fine Arts	140	17	7	24	17%
Plastic Arts	90	7	6	13	14%
Communication Design	50	10	1	11	22%
Faculty of Sciences	657	81	28	109	17%
Landscape Architecture	25	5	1	6	24%
Astronomy	20	3	3	6	30%
Biology	130	17	1	18	14%
Biochemistry	70	9	3	12	17%
Computer Science	40	2	3	5	13%
Engineering Sciences	45	7	3	10	22%
Environmental Sciences and Technology	40	1	4	5	13%
Network Engineering and IT Systems	70	3	2	5	7%
Physical Engineering	25	1	0	1	4%
Physics	22	2	1	3	14%
Geology	30	7	1	8	27%
Mathematics	50	6	1	7	14%
Chemistry	90	18	5	23	26%
Faculty of Nutrition and Food Science	65	3	1	4	6%
Nutrition Sciences	65	3	1	4	6%
Faculty of Sport	110	4	1	5	5%
Sports Sciences	110	4	1	5	5%
Faculty of Law	175	17	1	18	10%
Criminology	35	3	1	4	11%
Law	140	14	0	14	10%
Faculty of Economics	330	14	3	17	5%
Economics	216	6	1	7	3%
Management	114	8	2	10	9%
Faculty of Engineering	830	41	31	72	9%
Bioengineering	60	4	0	4	7%
Engineering Sciences - Mining and Geo- Environmental Engineering	10	1	2	3	30%
Civil Engineering	175	11	5	16	9%
Environmental Engineering	40	4	2	6	15%
Electrical and Computers Engineering	195	3	5	8	4%

	Placed 1 st round	Not enrolled	New placements	Total	%
	(1)	(2)	(3)	(2)+(3)	(2)+(3)/(1)
Industrial Engineering and Management	50	1	0	1	2%
Informatics and Computing Engineering	102	4	0	4	4%
Mechanical Engineering	112	3	7	10	9%
Metallurgical and materials Engineering	21	3	5	8	38%
Chemical Engineering	65	7	5	12	18%
Faculty of Pharmacy	185	17	2	19	10%
Pharmaceutical Sciences	185	17	2	19	10%
Faculty of Arts	642	105	28	133	21%
Archaeology	35	5	1	6	17%
Information Science	40	9	4	13	33%
Communication Sciences: Journalism, Public Relations and Multimedia	75	1	4	5	7%
Language Sciences	20	4	1	5	25%
Portuguese and Lusophone Studies	20	4	2	6	30%
Philosophy	56	15	2	17	30%
Geography	81	16	3	19	23%
History	80	20	2	22	28%
History of Art	35	6	4	10	29%
Applied Languages	30	3	1	4	13%
Languages and International Relations	35	3	0	3	9%
Languages, Literatures and Cultures	85	12	0	12	14%
Sociology	50	7	4	11	22%
Faculty of Medicine	245	0	1	1	0%
Medicine	245	0	1	1	0%
Faculty of Dental Medicine	90	9	1	10	11%
Dental Medicine	90	9	1	10	11%
Faculty of Psychology and Education Science	170	21	6	27	16%
Education Sciences	55	11	4	15	27%
Psychology	115	10	2	12	10%
Institute of Biomedical Sciences Abel Salazar	251	15	4	19	8%
Aquatic Sciences	35	9	3	12	34%
Medicine	156	0	0	0	0%
Veterinary Medicine	60	6	1	7	12%
U.Porto total	4010	349	118	467	12%

Notes:

(1) Successful applicants 1st round = Successful applicants in 1st round for the initial places + Successful applicants in 1st round for the additional places created to solve the problems of ties

(2) Applicants not enrolled = placed in the 1st round but who did not enrol

(3) New placements = successful applicants in the 1^a round who applied to the 2nd round and were placed again

Source: MCTES – DGES BD_U.Porto_08_1_2

Table 31: Successful applicants in the 2nd round per admission preference and course

	1	2	3	4	5	6	Total
Faculty of Architecture	7	1	1				9
Architecture	7	1	1				9
Faculty of Fine Arts	19	4	3				26
Plastic Arts	10	3	2				15
Communication Design	9	1	1				11
Faculty of Sciences	63	37	35	28	11	11	185
Landscape Architecture	4		2				6
Astronomy	2	3	4	2			11
Biology	15	5	7	2	1	3	33
Biochemistry	4	6	2	1			13
Computer Science	1	2	2	1	1		7
Engineering Sciences	2	1	3	4	2	3	15
Environmental Sciences and Technology	12	3	2	1	2		20
Network Engineering and IT Systems	4		2				6
Physical Engineering		3		1			4
Physics	3	4		5		1	13
Geology	4	3	1	2		1	11
Mathematics	4	3	8	3		1	19
Chemistry	8	4	2	6	5	2	27
Faculty of Nutrition and Food Science	1			1	1	1	4
Nutrition Sciences	1			1	1	1	4
Faculty of Sport	1						1
Sports Sciences	1						1
Faculty of Law	12	6					18
Criminology	4						4
Law	8	6					14
Faculty of Economics	27	5					32
Economics	17						17
Management	10	5					15
Faculty of Engineering	90	26	14	6	4	4	144
Bioengineering	1		1	1	2	1	6
Engineering Sciences - Mining and Geo-Environmental Engineering	1		1	1		1	4
Civil Engineering	18	2		1	1		22
Environmental Engineering	6	2	1				9

	1	2	3	4	5	6	Total
Electrical and Computers Engineering	18	10	2	1			31
Industrial Engineering and Management	6						6
Informatics and Computing Engineering	7					1	8
Mechanical Engineering	22	7	2				31
Metallurgical and Materials Engineering	2	4	2	2	1		11
Chemical Engineering	9	1	5			1	16
Faculty of Pharmacy	11	3	1		1	4	20
Pharmaceutical Sciences	11	3	1		1	4	20
Faculty of Arts	49	41	25	19	6	6	146
Archaeology	2	2		2	1		7
Information Science	7	3	1	2			13
Communication Sciences: Journalism, Public Relations and Multimedia	5						5
Language Sciences	3		2	1			6
Portuguese and Lusophone Studies			2	1	2	2	7
Philosophy	3	14	5	2	1	1	26
Geography	8	4	2	3	1	1	19
History	4	7	6	3	1	1	22
History of Art	2	4	1	2		1	10
Applied Languages	4						4
Languages and International Relations	1	2					3
Languages, Literatures and Cultures	7	2	2	2			13
Sociology	3	3	4	1			11
Faculty of Medicine	1						1
Medicine	1						1
Faculty of Dental Medicine		2	3	2	3	2	12
Dental Medicine		2	3	2	3	2	12
Faculty of Psychology and Education Science	13	6	4	2	1	1	27
Education Sciences	6	3	3	2	1		15
Psychology	7	3	1			1	12
Institute of Biomedical Sciences Abel Salazar	9	4	3	6	5	3	30
Aquatic Sciences	5	1	2	2	1	2	13
Veterinary Medicine	4	3	1	4	4	1	17
U.Porto total	303	135	89	64	32	32	655
	46%	21%	14%	10%	5%	5%	

Source: MCTES – DGES BD_U.Porto_08_1_2

Sources

MCTES – DGES A08_1F: Ministry of Science Technology and Higher Education, Directorate-General for Higher Education, *in* http://www.dges.mctes.pt/coloc/2008/cna2008_1f.xls

MCTES – DGES A07_1F: Ministry of Science Technology and Higher Education, Directorate-General for Higher Education, *in* http://www.acessoensinosuperior.pt/coloc2007/r_cna2007_1f.xls

MCTES – DGES BD_U.Porto_07_1F: database with the applicants and successful applicants to the University of Porto – 1st round 2007 provided by the Ministry of Science Technology and Higher Education, Directorate-General for Higher Education.

MCTES – DGES BD_U.Porto_08_1F: database with the applicants and successful applicants to the University of Porto – 1st round 2008 provided by the Ministry of Science Technology and Higher Education, Directorate-General for Higher Education.

MCTES – DGES BD_U.Porto_08_1_2: : database with the applicants and successful applicants to the University of Porto – 1st and 2nd rounds 2008 provided by the Ministry of Science Technology and Higher Education, Directorate-General for Higher Education.

MCTES – GM_08_n2: Note from the Ministry of Science Technology and Higher Education, Office of the Minister, on the Results of the 2nd Round, *in* http://www.dges.mctes.pt/coloc/2008/nota2008_2f.pdf

Acronyms

F – Female

M – Male

FADEUP – Faculty of Sport

FAUP – Faculty of Architecture

FBAUP – Faculty of Fine Arts

FCNAUP – Faculty of Nutrition and Food Science

FCUP – Faculty of Sciences

FDUP – Faculty of Law

FEP – Faculty of Economics

FEUP – Faculty of Engineering

FFUP – Faculty of Pharmacy

FLUP – Faculty of Arts

FMDUP – Faculty of Dental Medicine

FMUP – Faculty of Medicine

FPCEUP – Faculty of Psychology and Education Science

ICBAS – Institute of Biomedical Sciences Abel Salazar