

# **A Universidade do Porto no Quacquareli Symonds – QS World University Rankings 2020/2021**

Reitoria da Universidade do Porto

Gabinete de avaliação e qualidade.

10 de junho de 2020

## **SUMÁRIO**

1. Metodologia do QS WUR e participação da U.Porto .....	2
2. Evolução das posições da U.Porto no QS World University Rankings.....	4
3. Universidades portuguesas no QS World University Rankings 2020/21 .....	6

# A Universidade do Porto no Quacquareli Symonds – QS World University Rankings 2020/2021

<http://www.topuniversities.com/qs-world-university-rankings>

## 1. Metodologia do QS WUR e participação da U.Porto

“The QS World University Rankings continue to enjoy a remarkably consistent methodological framework, compiled using six simple metrics that we believe effectively capture university performance. Since faculty area normalisation was introduced in 2015 to ensure that institutions specialising in Life Sciences and Natural Sciences were not unduly advantaged, we have avoided fundamental changes. In doing so, we aim to ensure that year-on-year comparisons remain valid, and that unnecessary volatility is minimised.

Thus, universities continue to be evaluated according to the following six metrics:

1. Academic Reputation
2. Employer Reputation
3. Faculty/Student Ratio
4. Citations per faculty
5. International Faculty Ratio
6. International Student Ratio

### **Academic reputation (40%)**

The highest weighting of any metric is allotted to an institution's *Academic Reputation* score. Based on our *Academic Survey*, it collates the expert opinions of over 100,000 individuals in the higher education space regarding teaching and research quality at the world's universities. In doing so, it has grown to become the world's largest survey of academic opinion, and, in terms of size and scope, is an unparalleled means of measuring sentiment in the academic community.

### **Employer reputation (10%)**

Students will continue to perceive a university education as a means by which they can receive valuable preparation for the employment market. It follows that assessing how successful institutions are at providing that preparation is essential for a ranking whose primary audience is the global student community.

Our *Employer Reputation* metric is based on almost 50,000 responses to our *QS Employer Survey*, and asks employers to identify those institutions from which they source the most competent, innovative, effective graduates. The *QS Employer Survey* is also the world's largest of its kind.

### **Faculty/Student Ratio (20%)**

Teaching quality is typically cited by students as the metric of highest importance to them when comparing institutions using a ranking. It is notoriously difficult to measure, but we have determined that measuring teacher/student ratios is the most effective proxy metric for teaching quality. It assesses the extent to which institutions are able to provide students with meaningful access to lecturers and tutors, and recognizes that institutions with a high number of faculty members per student will reduce the teaching burden on each individual academic.

### **Citations per faculty (20%)**

Teaching is one key pillar of an institution's mission. Another is research output. We measure institutional research quality using our *Citations per Faculty* metric. To calculate it, we take the total number of citations received by all papers produced by an institution across a five-year period by the number of faculty members at that institution.

To account for the fact that different fields have very different publishing cultures – papers concerning the Life Sciences are responsible nearly half of all research citations as of 2015 – we *normalize* citations. This means that a citation received for a paper in Philosophy is measured differently to one received for a paper on Anatomy and Physiology, ensuring that, in evaluating an institution's true research impact, both citations are given equal weight.

We use a five-year publication window for papers, so for this edition we looked at papers published from 2014 to 2018. We then take a look at a six-year citation window; reflecting the fact that it takes time for research to be effectively disseminated. In this edition we look for citations from 2014-2019.

All citations data is sourced using Elsevier's *Scopus* database, the world's largest repository of academic journal data. This year, QS assessed 138 million citations from 18.5 million papers once self-citations were excluded.

**International faculty ratio/International student ratio (5% each)**

A highly international university acquires and confers a number of advantages. It demonstrates an ability to attract faculty and students from across the world, which in turn suggests that it possesses a strong international brand. It implies a highly global outlook: essentially for institutions operating in an internationalised higher education sector. It also provides both students and staff alike with a multinational environment, facilitating exchange of best practices and beliefs. In doing so, it provides students with international sympathies and global awareness: soft skills increasingly valuable to employers. Both of these metrics are worth 5% of the overall total.”<sup>1</sup>

Desde 2009, a Universidade do Porto disponibiliza ao QS a lista de empregadores e os dados relativos a estudantes, docentes/investigadores e propinas. De 2011 a 2016, disponibilizou as variantes de nome da Universidade no Scopus. Desde 2011, disponibiliza as listas de académicos.

Para esta edição, as listas de académicos e empregadores, os dados de estudantes (2018/2019) e académicos (2018) foram solicitados em dezembro de 2019, reportados em fevereiro de 2020 e validados pelo QS em março de 2020.

---

<sup>1</sup> Retirado de <https://www.topuniversities.com/qs-world-university-rankings/methodology> em 10 junho de 2019.

## 2. Evolução<sup>2</sup> das posições da U.Porto no QS World University Rankings

### Universidade do Porto - posições

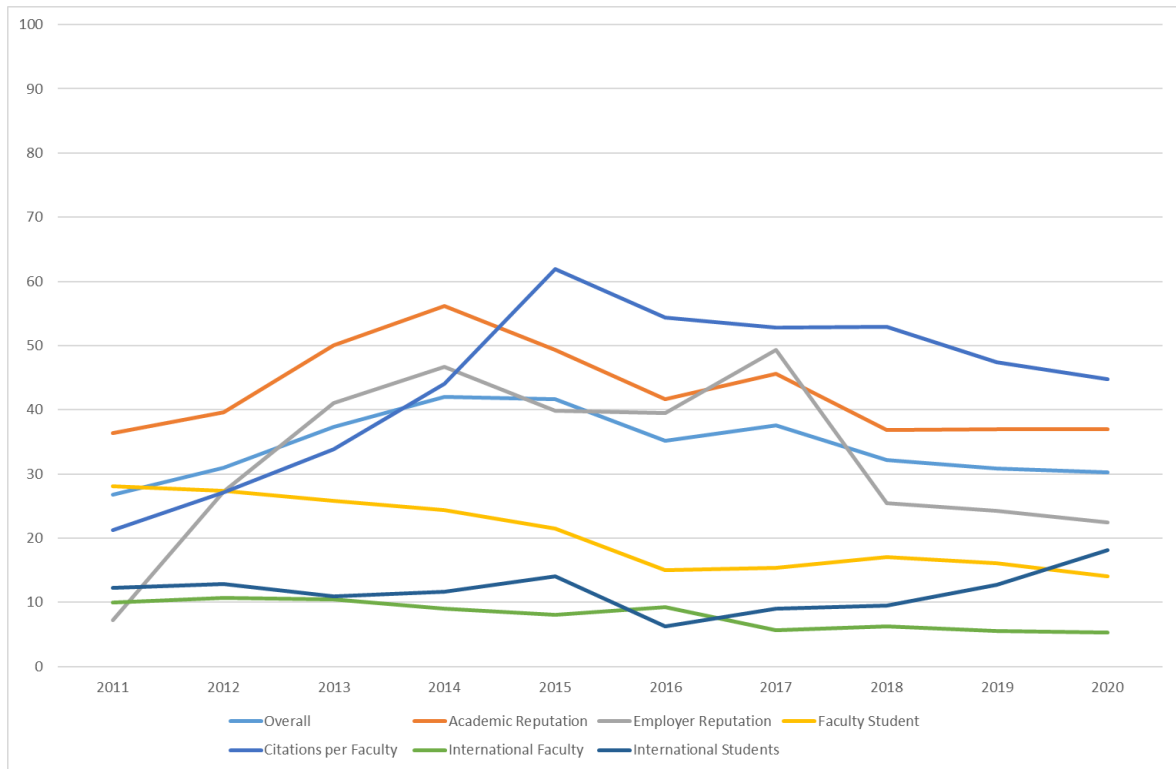
	# Mundo	# Europa	# Ibero América	# Portugal
2010	451-500	202	18	3
2011	401-450	185-203	19	2
2012	401-450	177-194	20	2
2013	343	157	20	1
2014	293	137	16	1
2015	308	138	17	1
2016	323	143	21	1
2017	301	134	18	1
2018	328	144	19	1
2019	353	161	22	2
2020	357	162	21	1=

### Quacquareli Symonds – QS World University – FACT FILE U.PORTO

		OVERALL	SURVEY INDICES		DATA INDICES			
			Academic Reputation (40%)	Employer Reputation (10%)	Faculty Student (20%)	Citations per Faculty (20%)	International Faculty (5%)	International Students (5%)
2011	Score	26,8	36,4	7,2	28,1	21,2	10	12,3
	Rank	401-450	301+	301+	301+	301+	301+	301+
2012	Score	31	39,6	27,2	27,4	27,1	10,7	12,8
	Rank	401-450	288	301+	301+	301+	301+	301+
2013	Score	37,3	50,1	41,1	25,8	33,8	10,5	10,9
	Rank	343=	222	373	401+	362	401+	401+
2014	Score	42	56,2	46,7	24,4	44,1	9	11,7
	Rank	293	205	333	401+	305	401+	401+
2015	Score	41,6	49,3	39,9	21,5	61,9	8,1	14,1
	Rank	308	237	391	401+	210	401+	401+
2016	Score	35,2	41,7	39,5	15	54,4	9,3	6,2
	Rank	323	238	317	501+	200	501+	501+
2017	Score	37,6	45,6	49,3	15,4	52,8	5,7	9
	Rank	301=	220	238	401+	208	401+	401+
2018	Score	32,2	36,9	25,5	17,1	52,9	6,2	9,5
	Rank	328	212	381	601+	204	601+	601+
2019	Score	30,9	37,0	24,2	16,1	47,4	5,5	12,7
	Rank	353	224	387	601+	255	601+	601+
2020	Score	30,2	37	22,5	14,1	44,8	5,3	18,1
	Rank	357	226	411	601+	274	601+	570

<sup>2</sup> Dados até 2013 retirados de "Evolução das posições da Universidade do Porto nos rankings universitários", jan. de 2014, in [https://sigarra.up.pt/up/pt/conteudos\\_service.conteudos\\_cont?pct\\_id=20113&pv\\_cod=55GoHdmanvlg](https://sigarra.up.pt/up/pt/conteudos_service.conteudos_cont?pct_id=20113&pv_cod=55GoHdmanvlg); dados de 2014 a 2020 retirados de <http://www.topuniversities.com/qs-world-university-rankings> respetivamente a 16 de setembro de 2014, 15 de setembro de 2015, 6 de setembro de 2016, 8 de junho de 2017, 7 de junho de 2018, 19 de junho de 2019 e 10 de junho de 2020.

## Universidade do Porto – evolução de scores



### 3. Universidades portuguesas no QS World University Rankings 2020/21

#### Posições das universidades portuguesas no QS WUR 2020/21 e 2019/20

	# Mundo		# Europa		# Ibero América		# Portugal	
	2019	2020	2019	2020	2019	2020	2019	2020
<b>Universidade de Lisboa</b>	338	357	149	162	20	21	1	1=
<b>Universidade do Porto</b>	353	357	161	162	22	21	2	1=
<b>Universidade Nova de Lisboa</b>	421	428	186	188	27	27	4	3
<b>Universidade de Coimbra</b>	406	431	181	191	26	28	3	4
<b>Universidade de Aveiro</b>	551-560	581-590	239-240	241-244	42-43	45-46	5	5
<b>Universidade do Minho</b>	651-700	591-600	265-280	245-249	56-65	47-48	6	6
<b>Universidade Católica Portuguesa</b>	801-1000	801-1000	325-391	316-397	78-122	77-113	7	7
<b>#IES</b>	1001	1002	391	397	122	113	7	7

#### Scores das universidades portuguesas no QS WUR 2020/21 e 2019/20

	Academic Reputation		Employer Reputation		Faculty Student		Citations per Faculty		International Faculty		International Students		Overall	
	2019	2020	2019	2020	2019	2020	2019	2020	2019	2020	2019	2020	2019	2020
<b>Universidade de Lisboa</b>	40,5	38,6	28,1	21,5	15,6	12,9	38,2	38,1	8	7,3	32,5	37,9	31,9	30,2
<b>Universidade do Porto</b>	37	37	24,2	22,5	16,1	14,1	47,4	44,8	5,5	5,3	12,7	18,1	30,9	30,2
<b>Universidade Nova de Lisboa</b>	26,9	26,2	27,8	25,9	28,2	27,2	22,4	21,6	26,7	25,6	43,8	47,1	27,3	26,6
<b>Universidade de Coimbra</b>	30,1	28,6	13,1	12,6	19	16	37,1	37,1	12,4	10	57,2	50,4	28,1	26,5
<b>Universidade de Aveiro</b>	n/d	n/d	n/d	n/d	n/d	n/d	59,4	56,7	n/d	n/d	n/d	n/d	n/d	n/d
<b>Universidade do Minho</b>	n/d	n/d	n/d	n/d	31,4	42,6	n/d	n/d	21,9	24,5	n/d	18	n/d	n/d
<b>Universidade Católica Portuguesa</b>	n/d	n/d	24,1	22,5	n/d	n/d	n/d	n/d	n/d	n/d	20,6	18,1	n/d	n/d

n/d – não disponível. Apenas são disponibilizados os indicadores se o valor colocar a IES no top 500 (Overall); no top 700 dos indicadores, exceto o “Academic Reputation” e o “Employer Reputation”, cujos valores só são apresentados se a IES estiver no top 600.

**Scores das universidades portuguesas no QS WUR 2020/21**

