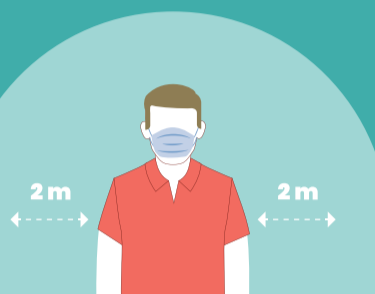


BEM-VINDOS AO COMPLEXO ICBAS/FFUP



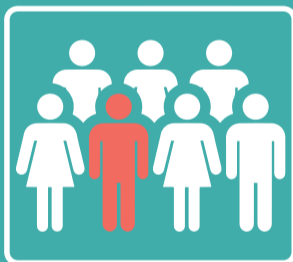
Uso obrigatório de máscara



Distanciamento físico
2 metros



Lave/desinfete
as mãos regularmente



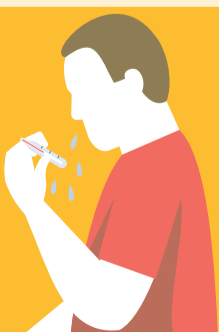
Cumpra a lotação dos espaços



Higienize frequentemente
as superfícies



Respeite a sinalética e prefira
as escadas aos elevadores



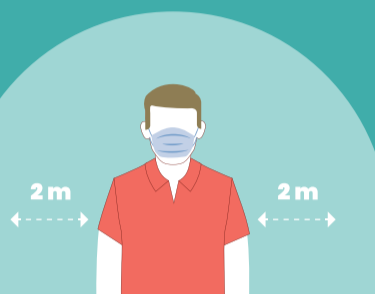
Se tiver sintomas compatíveis
com COVID fique em casa e
contacte a linha SNS24



WELCOME TO ICBAS/FFUP COMPLEX



Mandatory use of mask



**Physical distance
2 meters (6 feet)**



**Wash/ sanitize your
hands regularly**



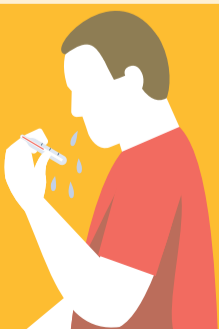
Comply with room capacity



**Sanitize all surfaces
frequently**



**Respect the signage and prefer
the stairs over the elevators**

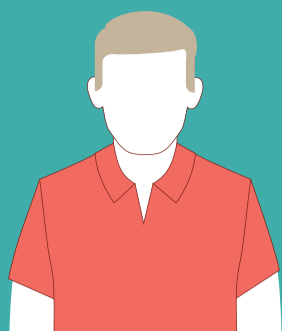


**If you have symptoms
compatible with COVID stay at
home and contact the SNS24 line**



MEDIDAS DE PREVENÇÃO
ICBAS / FFUP - COVID19





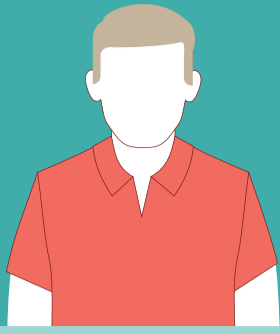
NORMAS PARA UTILIZAÇÃO DA CANTINA/BAR



A colaboração de todos faz a diferença!

1		12h00 - 14h30 Horário de utilização das mesas para refeições
2		Distanciamento obrigatório na fila de espera - 2 metros
3		As mesas são de utilização individual. Respeite a disposição de mesas e cadeiras
4		No final da refeição coloque os tabuleiros no local e o lixo nos contentores apropriados
5		Higienize o espaço utilizado com os materiais dos Postos de Desinfeção
6		São disponibilizadas refeições em regime de take-away, para consumo noutros locais





STANDARDS FOR THE USE OF CANTEEN/BAR



Everyone's collaboration makes a difference

1



12h00 – 14h30
Hours reserved for meals only

2



Mandatory distance in the queue
- 2 meters (6 feet)

3



Tables are for individual use only. Please respect the layout of tables and chairs

4



After the meal please place your tray and garbage at the appropriate places for that purpose

5



Clean your space with the materials made available at the Desinfection Stations

6



Take-away meals are available for consumption outside of buildings

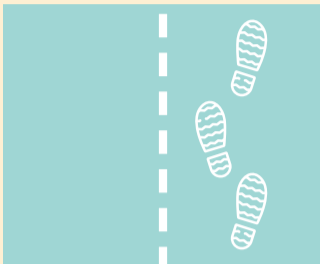




NORMAS PARA CORREDORES E SALAS

A colaboração de todos faz a diferença!

1



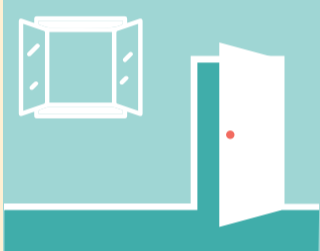
Circule pela direita

2



**Mantenha o distanciamento
dentro e fora das salas**

3



Mantenha portas e janelas abertas

4



**Cumpra a lotação dos espaços
(Salas, WCs)**

5



1 Estudante por mesa

6



Desinfete as mesas periodicamente



MEDIDAS DE PREVENÇÃO
ICBAS / FFUP - COVID19

U. PORTO
INSTITUTO DE CIÊNCIAS
BIOMÉDICAS ABEL SALAZAR
UNIVERSIDADE DO PORTO

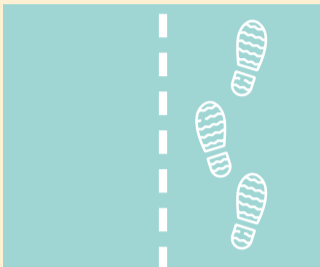
U. PORTO
FACULDADE DE FARMÁCIA
UNIVERSIDADE DO PORTO



STANDARDS FOR CORRIDORS AND ROOMS

Everyone's collaboration makes a difference

1



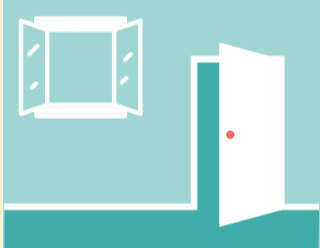
Circulate on the right side of corridors

2



Maintain physical distance when in and out the rooms

3



Always keep the doors and windows open

4



**Comply with room capacity
(rooms, classrooms, wc's)**

5



1 student for table

6



Clean tables regularly





POSTO DE DESINFECÇÃO

A colaboração de todos faz a diferença!

1



**Aplique o desinfetante
de superfícies no toalhete
(Uso exclusivo de superfícies)**

2



**Higienize as superfícies
com as quais vai contactar
(secretária, mesa, teclado, rato, monitor)**

3



**Coloque o toalhete
no contentor próprio**





DISINFECTION STATION

Everyone's collaboration makes a difference

1



**Apply surface disinfectant
on the towel**
(exclusive use on surfaces)

2



**Sanitize the surfaces which
you will be in contact with**
(desk, table, keyboard, mouse, monitor)

3



**Place the towel in the
proper container**

